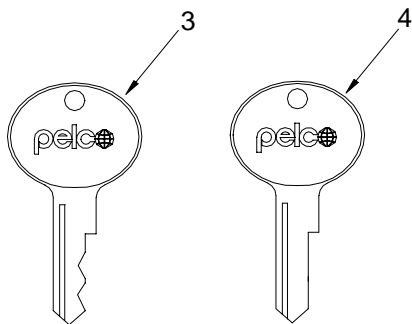
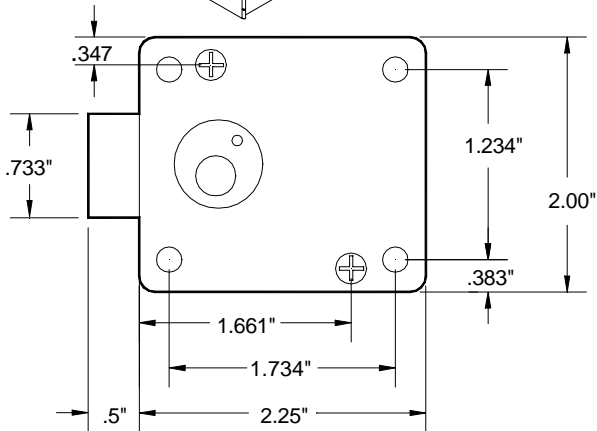
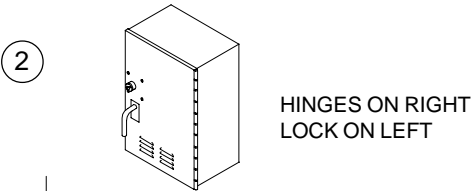
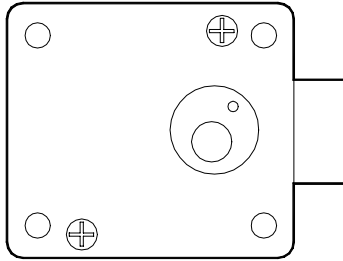
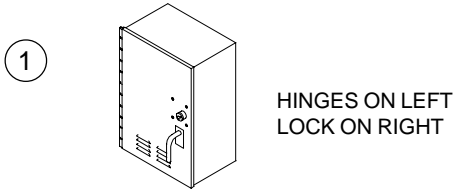


CABINET LOCK TYPE II



ITEM	DESCRIPTION	PART NO.
①	LEFT HAND LOCK ONLY W/ Square Latch	SM-1043
	LEFT HAND LOCK W/ Square Latch & 1 Key	SM-1047
	LEFT HAND LOCK W/ Square Latch & 2 Keys	SM-1045
	LEFT HAND LOCK ONLY W/ Tapered Latch	SM-1044
	LEFT HAND LOCK W/ Tapered Latch & 2 Keys	SM-1046
②	RIGHT HAND LOCK ONLY W/ Square Latch	SM-1025
	RIGHT HAND LOCK W/ Square Latch & 1 Key	SM-1048
	RIGHT HAND LOCK W/ Square Latch & 2 Keys	SM-1026
	RIGHT HAND LOCK ONLY W/ Tapered Latch	SM-1023
	RIGHT HAND LOCK W/ Tapered Latch & 2 Keys	SM-1024
3	KEY, Type II Cabinet Lock	SM-0198-2
4	BLANK KEY, Type II Cabinet Lock	SM-0198-B

NOTES:

1. UNLESS OTHERWISE SPECIFIED, ALL LOCKS WILL BE PROVIDED TO FIT A #2 KEY. ALL LOCKS CAN BE PROVIDED WITH OTHER KEY CONFIGURATIONS UPON REQUEST.
2. LEFT AND RIGHT HAND LOCKS ARE AVAILABLE WITH EITHER SQUARE OR TAPERED LATCHES.

