



R829 School Zone Calendar Configuration Instructions

Contents

- 1.0 School Zone Calendar Configuration Instructions 3
 - 1.1 Installation and Configuration 3
 - 1.1.1 USB Driver Installation 3
 - 1.1.2 Installing the Software 3
 - 1.2 Communications Setup 3
 - 1.2.1 Beacon Communication 3
 - 1.3 Creating a Calendar..... 4
 - 1.3.1 Creating a New Calendar 4
 - 1.3.2 Setting the Start Day 6
 - 1.3.3 Setting the End Day 8
 - 1.3.4 Turning the Lights OFF on a Specific Day 9
 - 1.3.5 Turning the Lights ON for a Specific Day at Specific Times 9
 - 1.4 Sending a Calendar to the School Zone Beacon 11
 - 1.5 Saving a Calendar to File 13
 - 1.6 File Operations 13
 - 1.6.1 New 13
 - 1.6.2 Load..... 13
 - 1.6.3 Save/Save As 13
 - 1.6.4 Quit 13
 - 1.7 Calendar Operations..... 13
 - 1.8 Communicate Operations..... 13
 - 1.8.1 Send Calendar..... 13
 - 1.8.2 Read Calendar 14
 - 1.8.3 Send Time 14
 - 1.8.4 Read Time 14
- 2.0 FAQs and Troubleshooting 15
 - 2.1 Frequently Asked Questions 15
 - 2.2 Troubleshooting 15

1.0 School Zone Calendar Configuration Instructions

1.1 Installation and Configuration

System Requirements

Windows 7 and 10 supported (32 & 64 bit).

1.1.1 USB Driver Installation

1. The School Zone Configuration software will install the required USB-Serial drivers as part of its installation. Do not plug in the supplied USB cable until the installation of the School Zone Configuration software has completed.

1.1.2 Installing the Software

1. Run the setup executable file.
2. The Wizard will appear – follow the prompts using the default selections.

1.2 Communications Setup

1.2.1 Beacon Communication

To set up the communication for the software and Beacon System follow these steps:

1. Open the application using the icon created on your desktop. When the calendar configuration window opens, pull down the Configure menu. Select “Communications.”

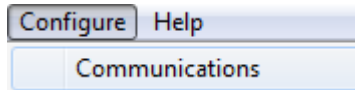


Figure 1-1

2. Select which communications port the Beacon System is connected to. Keep the Baud Rate set to the value of 115200.

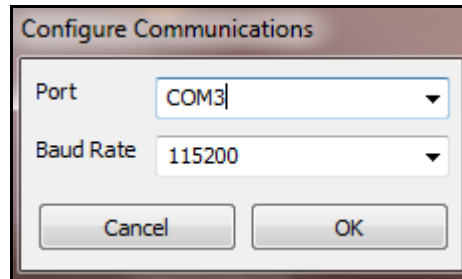


Figure 1-2

3. Once you are satisfied with the settings, click on the button labeled 'OK'. A progress bar will appear. The Beacon System is now being set up in preparation for communicating with your computer.

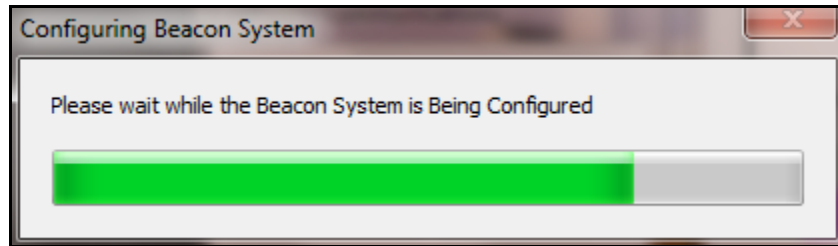


Figure 1-3

4. If setup is successful, you will see the following “SUCCESS!” message. Your Beacon System is configured and now ready to use.

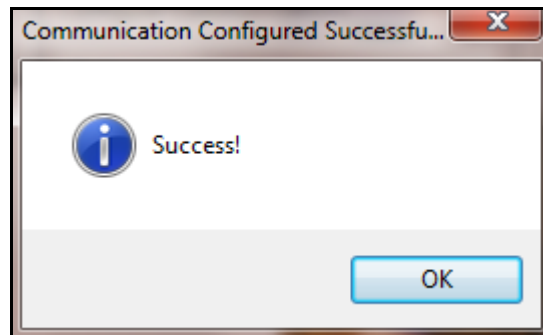


Figure 1-4

5. Click on 'OK' to continue.

1.3 *Creating a Calendar*

This section is intended as a step by step guide to creating a calendar. We will cover calendar creation, setting the start day of the calendar, making the lights flash at different times on a different day and modifying the times when the light flashes on this day.

This is best performed prior to going to the location of your School Zone Beacon.

1.3.1 **Creating a New Calendar**

To create a new calendar, navigate to the File menu and click on the **New** menu item.

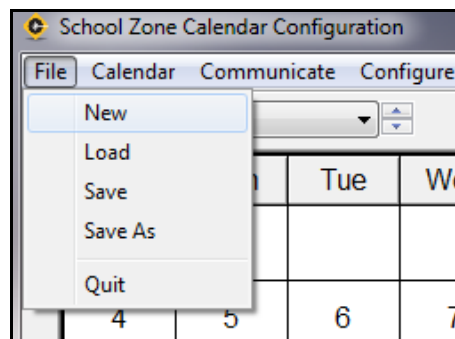


Figure 1-5

This creates a calendar that starts today with the weekends set to off and the weekdays set to a standard school day. Let's take a look at the calendar that was created:

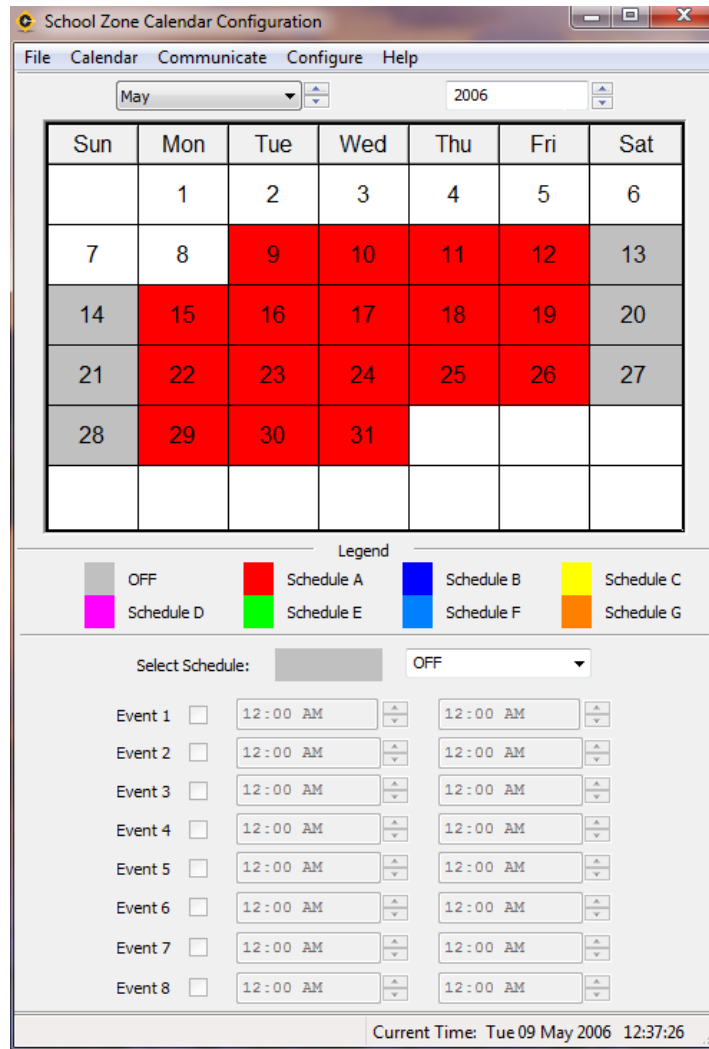


Figure 1-6

Your calendar will look similar to this one; the start date (in this case May 9th) will be different. Saturday and Sunday are colored GRAY (OFF) and Monday through Friday are colored RED (Schedule A). This means that the lights will not flash on weekends and Monday through Friday the lights will flash according to Schedule A. Let's take a look at Schedule A's events so that we know when the lights are going to flash. Navigate the mouse down to the "Select Schedule" box below the legend and click on the down arrow. Then select Schedule A and left click on it.

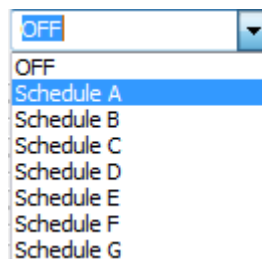
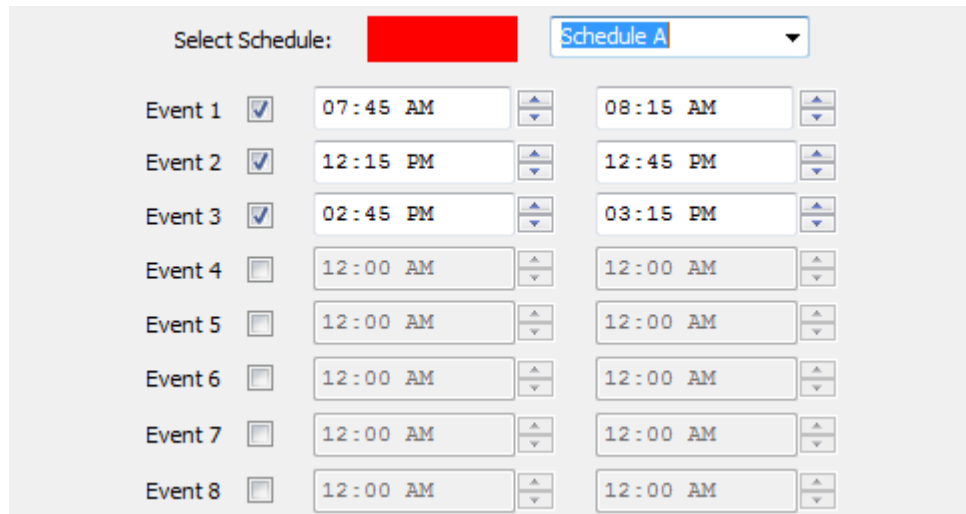


Figure 1-7

The whole lower half of the screen will change to reflect the events for Schedule A.



The screenshot shows a configuration window for a calendar. At the top, there is a 'Select Schedule:' label followed by a red rectangular box and a dropdown menu currently set to 'Schedule A'. Below this, there are eight rows, each representing an event. Each row contains a checkbox, a start time field, and an end time field. The start and end time fields have up and down arrow buttons for adjustment. The events are as follows:

Event	Start Time	End Time
Event 1	07:45 AM	08:15 AM
Event 2	12:15 PM	12:45 PM
Event 3	02:45 PM	03:15 PM
Event 4	12:00 AM	12:00 AM
Event 5	12:00 AM	12:00 AM
Event 6	12:00 AM	12:00 AM
Event 7	12:00 AM	12:00 AM
Event 8	12:00 AM	12:00 AM

Figure 1-8

Here we can see that the lights will be flashing from 7:45 am to 8:15 am, 12:15 pm to 12:35 pm, and 2:45 pm to 3:15 pm for Schedule A. For the calendar that we just created, this will happen on all days that are colored RED - in this case Monday through Friday.

1.3.2 Setting the Start Day

The new calendar that we just created is a good start, but in order for your calendar to look similar to mine throughout this tutorial, we have to adjust where your calendar starts. Normally, you would adjust the start date to the start of the school year. Navigate to the Calendar → Set Start Day menu and left click.



Figure 1-9

This will cause a calendar to pop up where you can select the start day from.

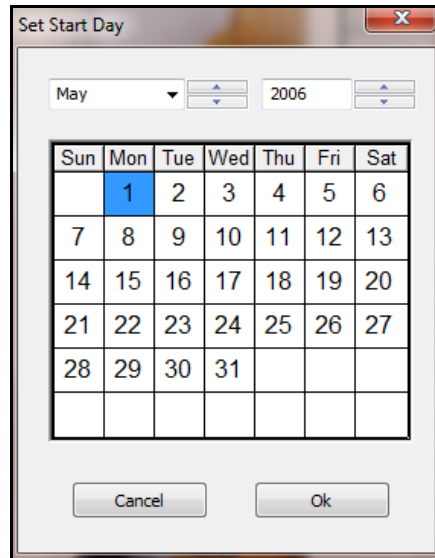


Figure 1-10

Navigate your way to May 2006 and highlight May 9th by clicking on it.

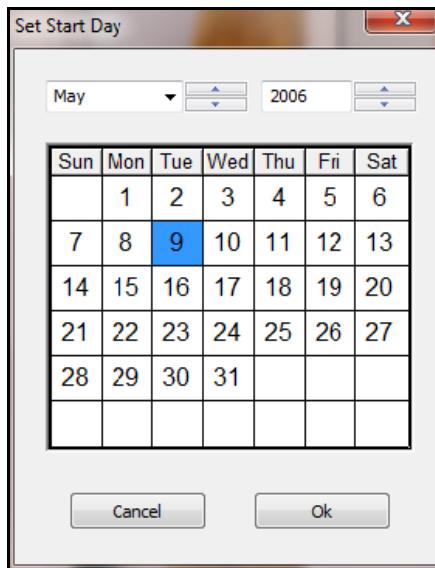


Figure 1-11

Click on the OK button. The calendar should now look like the following:

Sun	Mon	Tue	Wed	Thu	Fri	Sat
	1	2	3	4	5	6
7	8	9	10	11	12	13
14	15	16	17	18	19	20
21	22	23	24	25	26	27
28	29	30	31			

Figure 1-12

1.3.3 Setting the End Day

This works similarly to the Set Start Day command, except that you set where your calendar should end. Navigate to the Calendar → Set End Day menu and left click.

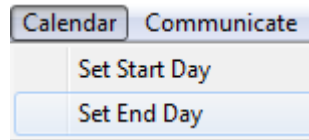


Figure 1-13

This will cause a calendar to pop up where you can select the end day.

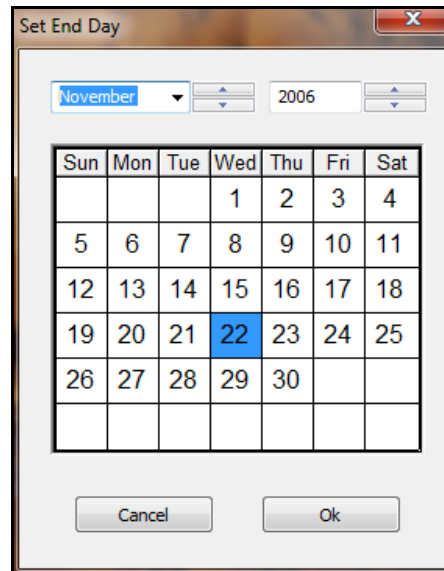


Figure 1-14

This day and all days after this day will be set to OFF.

1.3.4 Turning the Lights OFF on a Specific Day

We need to take into account for holidays and may wish to have the lights OFF for these days.

Let's turn the lights off for a specific day. Navigate the mouse down to the "Select Schedule" box below the legend and click on the down arrow. Then select OFF and left click on it.

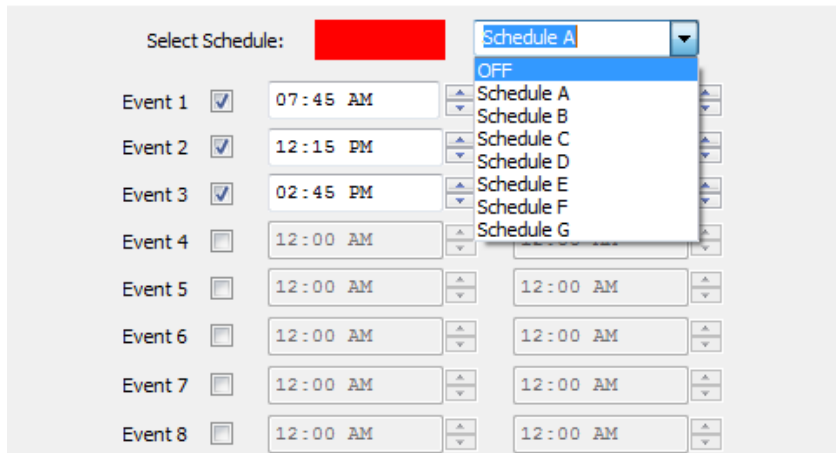


Figure 1-15

Now move the mouse over May 10th and left click. May 10th will change from RED to GRAY.

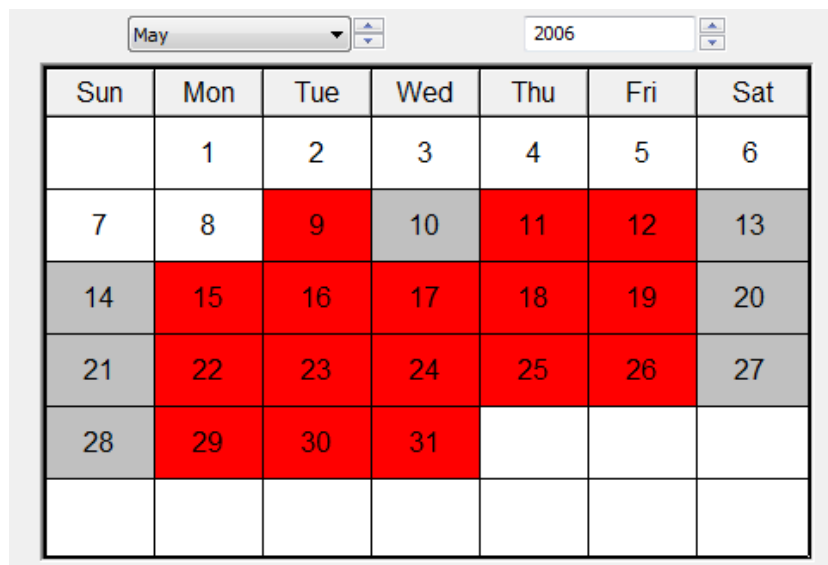


Figure 1-16

1.3.5 Turning the Lights ON for a Specific Day at Specific Times

We may wish to have the lights flash at different intervals for specific days.

What if we want the lights to flash from 8:30am to 8:45am then 12:00 pm to 12:15 pm on May 11th? Let's modify Schedule B to let us do this and add it to the calendar. Navigate the mouse down to the "Select Schedule" box below the legend and click on the down arrow. Then select Schedule B and left click on it.

Select Schedule: [REDACTED] Schedule A

Event 1	<input checked="" type="checkbox"/>	07:45 AM	08:15 AM
Event 2	<input checked="" type="checkbox"/>	12:15 PM	12:45 PM
Event 3	<input checked="" type="checkbox"/>	02:45 PM	03:15 PM
Event 4	<input type="checkbox"/>	12:00 AM	12:00 AM
Event 5	<input type="checkbox"/>	12:00 AM	12:00 AM
Event 6	<input type="checkbox"/>	12:00 AM	12:00 AM
Event 7	<input type="checkbox"/>	12:00 AM	12:00 AM
Event 8	<input type="checkbox"/>	12:00 AM	12:00 AM

Figure 1-17

Enable the Event 1 for Schedule B by clicking on the checkbox to the left of Event 1

Select Schedule: [REDACTED] Schedule B

Event 1	<input checked="" type="checkbox"/>	12:00 AM	12:00 AM
Event 2	<input type="checkbox"/>	12:00 AM	12:00 AM

Figure 1-18

Click on the up and down arrows to set Event 1 to start at 8:30am and end at 8:45am

Select Schedule: [REDACTED] Schedule B

Event 1	<input checked="" type="checkbox"/>	08:30 AM	08:45 AM
Event 2	<input type="checkbox"/>	12:00 AM	12:00 AM

Figure 1-19

Do the same for Event 2 but set it to start at 12:00pm and end at 12:15pm

Select Schedule: [REDACTED] Schedule B

Event 1	<input checked="" type="checkbox"/>	08:30 AM	08:45 AM
Event 2	<input checked="" type="checkbox"/>	12:00 PM	12:15 PM

Figure 1-20

Now left click the calendar on the 11th of May.

Sun	Mon	Tue	Wed	Thu	Fri	Sat
	1	2	3	4	5	6
7	8	9	10	11	12	13
14	15	16	17	18	19	20
21	22	23	24	25	26	27
28	29	30	31			

Figure 1-21

Now that you're familiar with the steps that you have to go through in order to configure a calendar, you should set your calendar to reflect how you want the lights to flash throughout your school year. After you've done this, move on to the next step → Sending a Calendar to the School Zone Beacon.

1.4 Sending a Calendar to the School Zone Beacon

Once the calendar is setup, follow the instructions below to load it to the school zone beacon:

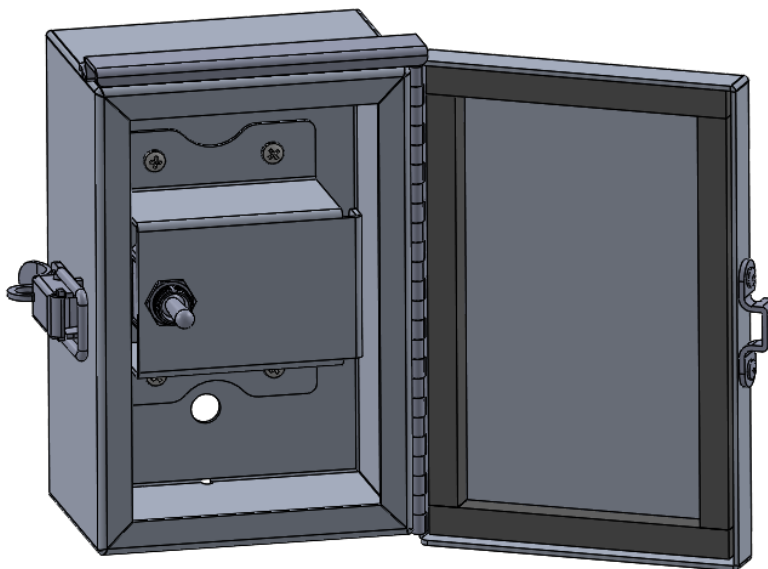


Figure 1-22

1. Open the Switch Box (see above) and connect the USB cable located inside the box to your computer running the calendar software.
2. Navigate to the Communicate Menu and click on the Send Calendar menu item. Wait for the calendar to be sent. Please be patient while the calendar is being sent. The amount of progress that has been made in sending the calendar is reflected by the progress bar.

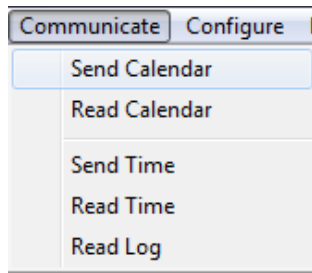


Figure 1-23

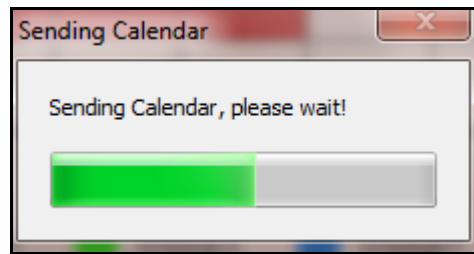


Figure 1-24

After the calendar has been sent successfully, a message will be shown as follows:

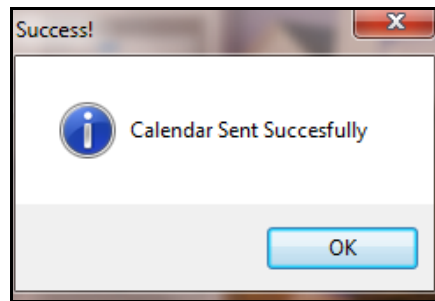


Figure 1-25

Your calendar is now programmed into the School Zone Beacon and the lights will flash at the times that you specified on your calendar.

3. You can now disconnect the USB cable from your computer, and place the cable back inside the switch box.

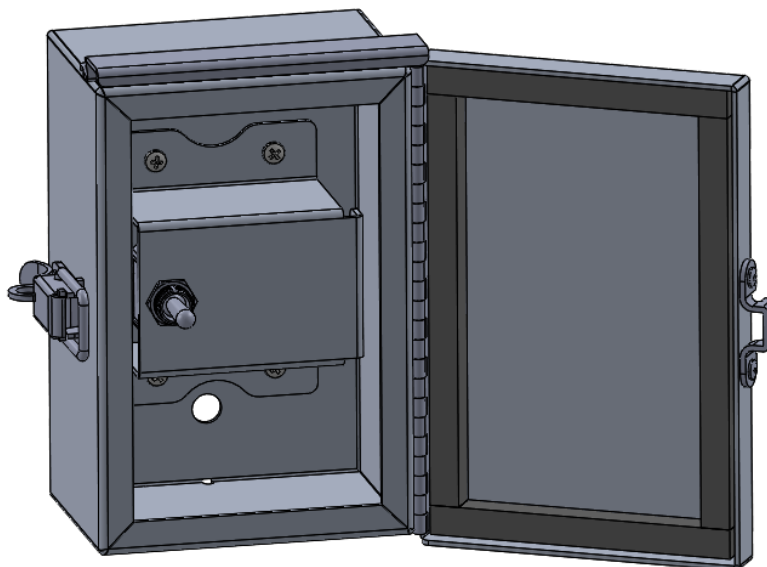


Figure 1-26

1.5 Saving a Calendar to File

After you have downloaded the calendar to the School Zone Beacon, you may wish to save it to file so that you can reuse the same settings when you program it next year. Navigate to the File Menu and click on Save As.

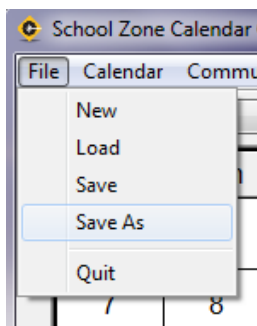


Figure 1-27

Enter a name for the file that you wish to save (no spaces in the file name) and click on the save button

1.6 File Operations

The following is a description of each operation on the File Menu

1.6.1 New

The File → New action creates a default calendar starting on the current day. Saturday and Sunday are set to a default value of OFF (gray), Monday through Friday are set to a default value of Day 1 (red). Day 1 is set to flash from 7:45AM to 8:15AM, 12:15PM to 12:45PM and 2:45PM to 3:15PM.

1.6.2 Load

The File → Load action allows you to load a Calendar that you saved to file on a previous occasion. Click on this menu item, navigate to the file that you wish to open, select it and click the Open button. The calendar that you had saved is now loaded into the School Zone Configuration Program.

1.6.3 Save/Save As

The File → Save action allows you to save a calendar to file. Click on this menu item, navigate to the folder where you wish to save the file, enter a filename and click on the Save button.

1.6.4 Quit

The File → Quit action closes the School Zone Configuration Program.

1.7 Calendar Operations

Please refer to 1.3.2 Set Start Day and 1.3.3 Set End Day in Section 1.3 of this document; it contains a detailed description on how to perform these actions.

1.8 Communicate Operations

This section describes the actions that send and receive information to the School Zone Beacon

1.8.1 Send Calendar

The Communicate → Send Calendar action sends a complete image of the calendar at the current time to the School Zone Beacon. Please refer to Section 1.5 Sending a Calendar to the School Zone Beacon for more detailed information.

1.8.2 Read Calendar

The Communicate → Read Calendar action reads a complete image of the calendar from the School Zone Beacon. After performing this action, a progress bar will appear - once the calendar is read, the School Zone Configuration Software is updated with the calendar that is read from the School Zone Beacon. Now you know exactly what is contained in the calendar that was previously sent to the School Zone Beacon.

1.8.3 Send Time

The Communicate → Send Time action sends the current time from the software to the School Zone Beacon.

1.8.4 Read Time

The Communicate → Read Time action reads the time from the School Zone Beacon and sends it to the software.

2.0 FAQs and Troubleshooting

2.1 Frequently Asked Questions

Do I have to worry about Daylight Saving Time?

No, this is automatically taken into account by the School Zone Software. The School Zone Beacon will operate correctly when Daylight Saving Time comes into effect.

How do I contact Carmanah?

The toll free number for North America is 1.877.722.8877, worldwide Carmanah can be reached at 1.250.380.0052.

Where can I find information about the R829 School Zone Beacon?

This information is available on the Carmanah website at <http://www.carmanah.com/>

2.2 Troubleshooting

I'm having trouble configuring the R829 Beacon System, what should I do?

Ensure that the drivers for the USB cable are correctly installed. Check that the Beacon System is connected to your computer with the supplied USB cable. Unplug the Beacon System from the computer, plug it back in and try configuring it again. The baud rate should be set to 115200.

I'm having trouble communicating with the School Zone Beacon from my computer, what should I do?

Ensure the Beacon System's configuration process has been successful and make sure the Beacon System is powered on.



© 2018 Carmanah Technologies Corporation
www.carmanah.com

Technical Support: customerservice@carmanah.com
Toll Free in Canada and the U.S.: 1.877.722.8877
International: 1.250.380.0052 | Fax: 1.250.380.0062

Number: 84361RevA - R829 School Zone Calendar Instruction Manual

84361