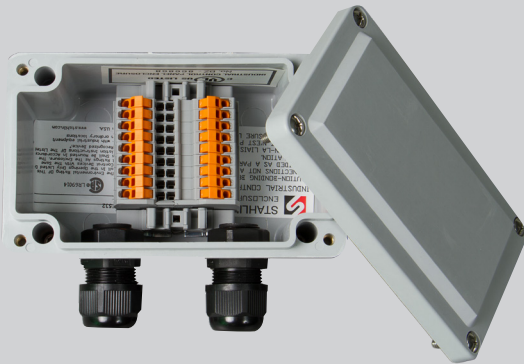


Junction box for splicing cables

The sensor cable junction box provides connection between the sensor's pigtail cable and the homerun cable to the cabinet. This box's nine terminal blocks eliminate the need to pull a connectorized cable from the sensor to the cabinet. Its small size allows for an in-line connection that will fit in a hand hole.



- Nine terminal blocks means that the box can be used with cables with nine or fewer conductors and drains, namely the Wavetronix SmartSensor 6-conductor cable and the 8-conductor cable
- NEMA type 4, 4x enclosure, providing a degree of protection against falling dirt, windblown dust, water, and ice
- Insulation displacement terminal blocks for quick wiring
- Small form factor for placement in traffic pole hand hole
- Cable grips for water resistance
- Same-side cable entry prevents

cable path water trails from pooling on cable grip

