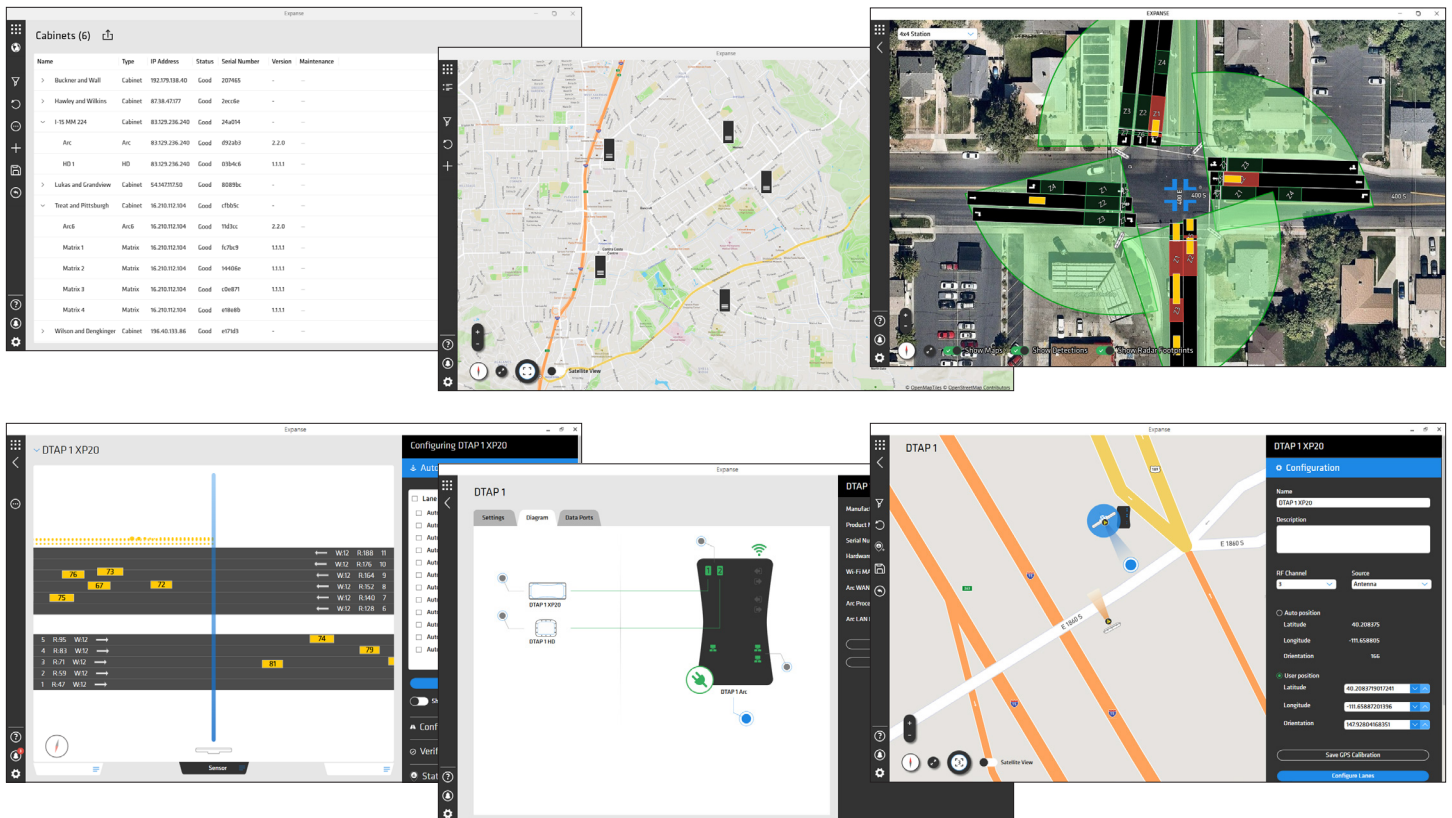


Cohesive software system that connects to all your Wavetronix devices

The Expanse software combines non-intrusive radar sensors with next generation cabinet devices to create a unique, unified user experience, all on a software platform that continuously evolves and expands. The software allows you to see all your Wavetronix sensors and Arc cabinet devices and manage them in real time.

EXPANSE

- Gives you a high level view of, and control over, all Wavetronix sensors in your system
- Features a highly customizable organization structure
- Includes bulk device upgrading and health monitoring
- Ability to bin and secondary bin speed, volume, occupancy, classification, and additional ITS data in more than one time interval
- Upgradeable to better perform with cutting-edge hardware
- Retro-fit-ready to pair with older Wavetronix devices
- Virtual World mode available for training
- No user license required



Expanse technical specifications

Features

- Configuration utility for all Expanse hardware
- Provides complete access to all sensor and cabinet settings
- Graphical user interface with traffic pattern display for traffic monitoring and sensor verification
- Map view shows all discovered devices on a map; List view shows all discovered devices organized in a list
- Automatic and manual lane and zone configuration
- User-selectable English or metric units

Connections

- Automatic device discovery when on the same network negates the need to connect and reconnect
- Bulk asset upgrade
- Connects to IP-addressable equipment and network-compatible devices
- Version control

Configuration

- Supported operating systems:
 - Windows 7
 - Windows 8
 - Windows 10
 - Windows 11
- Stations allow you to group lanes and zones from different sensors into one data stream
- Customizable entities with improved options for data gathering
- Push data to multiple databases

Monitoring

- Health alerts allow you to see:
 - Changes in device functionality
 - Communication status
 - Power and voltage changes
 - Orientation of the sensor adjustments
 - Device component status information

Data management

- Properties and tags help manage, organize, search, and filter devices
- Properties and tags allow you to see:
 - Routes (groups of sensors on the same freeway/roadway)
 - Sensors/cabinets in certain areas/districts
 - Maintenance flags
 - Dates of action storage
 - Warranty information

Support

- Training and tech support available

Ordering information

The Expanse software is required to configure the following products:

XP21, XP20
101-0479, 101-0451

SmartSensor Matrix, SmartSensor Advance
SS-225, SS-200

SmartSensor HD
101-0415

Arc, Arc6
102-0439, 102-0594

Arc Surge v2, SmartSensor Surge v2,
102-0564, 102-0562

XP20 Surge, XP21 Surge
102-0482, 101-0483

Download Expanse at nexus.wavetronix.com

Contact us

801.734.7200
sales@wavetronix.com
www.wavetronix.com

- Training includes:
 - Knowledgeable trainers
 - Presentation materials
 - Classroom and in-field instruction
 - Installation and configuration instruction to ensure accurate performance
 - Instruction in use of computer and other necessary equipment
 - Virtual configuration
- Tech support includes:
 - Technical representatives available for installation and configuration
- Ongoing troubleshooting and maintenance support
- Documentation:
 - Hardware installation and configuration guides
 - Expanse Software User Guide