

Approval# SCP-004P



applied
INFORMATION

- High Visibility Flash Action
- Rugged Weatherproof Construction
- Easily Installed
- Available Mounts:
 - Post Top
 - Side of Pole
 - Mast Arm
- Time Clock Choice:
 - [Applied Information 500-070 Cellular 1, 2, 5, & 10 year](#)
 - Tork DTS200B
 - RTC AP22

School Signals are used to regulate the speed of vehicular traffic along sections of streets and highways which are adjacent to or near schools.

The system is controlled by a time clock, which can be set to any desired daily hours of operation, and operate on a five day schedule, skipping Saturday and Sunday.

In normal operation, two signal assemblies are used, one at each end of the school zone, both controlled by separate time clocks. Each signal presents an illuminated speed indication in the center section, and alternate flashing yellow beacons above and below the speed section.

The beacons and signals meet all Institute of Traffic Engineers and American Standards Association standards for traffic control signals.

The control assembly is housed in a natural aluminum weatherproof cabinet and is pole mounted typically behind the cabinet. The control assembly includes a 2 circuit flasher, a

solid state time clock, a 10 amp breaker, an over voltage suppressor (MOV), grounding terminal, terminal block for 120VAC service and signal termination.

The control assembly includes a time clock output, flash control output, and a manual “on-off” switch with controls the school signal output. The “on-off” switch stays in the “on” position during the school year and “off” when school is not in session. The time clock will automatically adjust for daylight savings time changes.

The Applied Information Time Clock System, comes with a 1, 5, or 10 year cellular plan. This allows the user to have full access to every time clocks throughout the network. Alternatively, a user can pick a certain set of school signs to change. Users can use a smart phone or PC to connect to the Glance Software for system operation and monitoring.



(908)231-1133

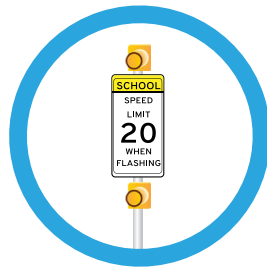
Signal Control Products, Inc.

199 Evans Way, Branchburg NJ 08876

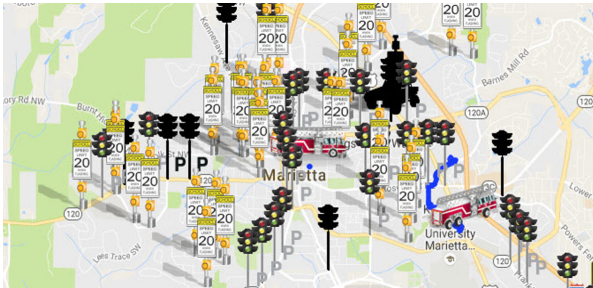
737 Hagey Center Dr. Unit B-1, Souderton PA 18964



(215)721-2210



Pedestrian Safety



1 - Normal Day					
	M	D	Days	Time	Command
1	ALL	ALL	.MTWTF.	07:30:00	Beacon ON
2	ALL	ALL	.MTWTF.	08:30:00	Beacon OFF
3	ALL	ALL	.MTWTF.	14:30:00	Beacon ON
4	ALL	ALL	.MTWTF.	15:30:00	Beacon OFF
5	00:00:00	
6	00:00:00	
7	00:00:00	
8	00:00:00	
9	00:00:00	
10	00:00:00	

Glance Software – User interface for Applied Information Time Clocks

Set custom programs, holidays, exceptions and overrides.

Overview

The AI-500-070 series provides a cost-effective, easy to integrate means of adding monitoring and control to School Beacons Flashers. It is designed for extreme temperature applications and has low power requirements, making it suitable for solar powered applications. The simple Integrated School Beacon Timer Switch and Cellular Modem can be retrofitted into existing School Beacon cabinets to upgrade the school beacons to the latest technology.

The unit provides an easy way to monitor the school beacons status and health such as AC power, battery backup, monitor beacon current, cabinet door open, local override control and radar speed information.

The unit works in conjunction with the Glance Platform, providing a cloud-based School Beacon solution. Simply connect the unit to your school beacons to add monitoring and control to your equipment. The unit allows you to remotely configure schedules for the school beacons from the Glance cloud based software.

