

HOLLOW SPIDER FOR 2-WAY ASSEMBLY

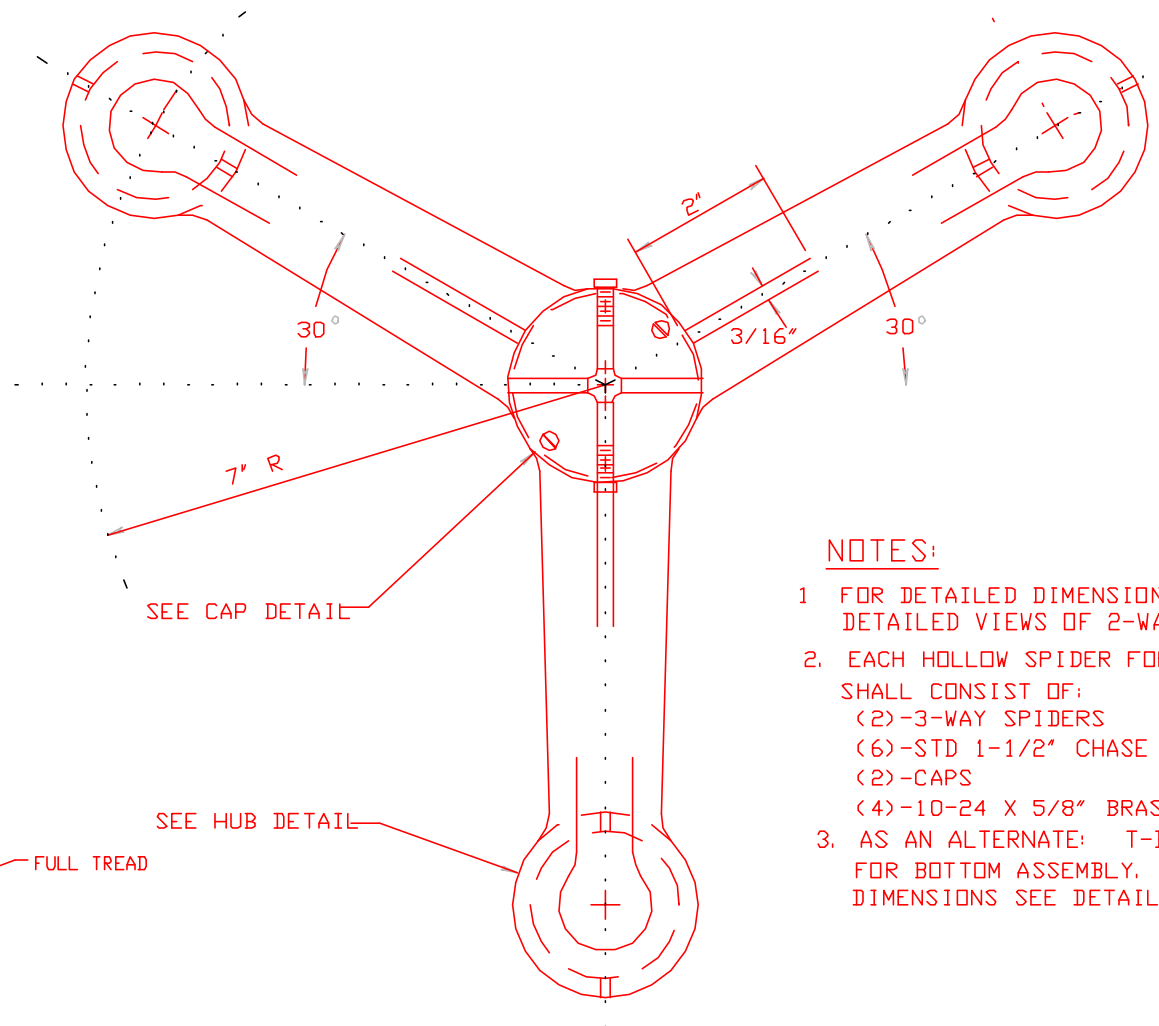
NTS
MATL. ALUM ALLOY 356

NOTE:

1. EACH HOLLOW SPIDER FOR 2-WAY ASSEMBLY SHALL CONSIST OF:
 - (1)-2-WAY SPIDER
 - (2)-STANDARD 1-1/2" CHASE NIPPLE, BRONZE 85-5-5-5
 - (1)-CAP
 - (2)-10-24 x 5/8" BRASS BH. SCREWS

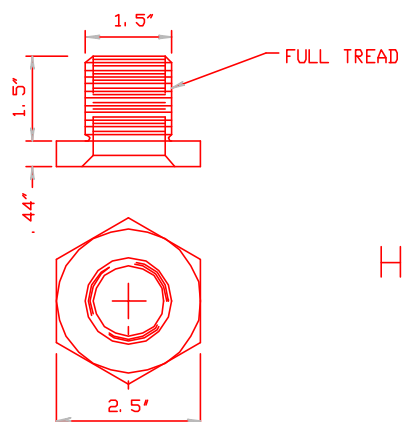
2 WAY HOLLOW BRACKET

Signal Control Products, Inc.
199 Evan Way, Branchburg NJ 08876-4600
Ph: 908-231-1133 Fax: 908-707-0333



NOTES:

1. FOR DETAILED DIMENSIONS OF 3-WAY 'SPIDER' SEE DETAILED VIEWS OF 2-WAY ASSEMBLY.
2. EACH HOLLOW SPIDER FOR 3-WAY ASSEMBLY SHALL CONSIST OF:
 - (2)-3-WAY SPIDERS
 - (6)-STD 1-1/2" CHASE NIPPLES, BRONZE 85-5-5-5
 - (2)-CAPS
 - (4)-10-24 X 5/8" BRASS RD. HD. SCREWS
3. AS AN ALTERNATE: T-BAR MAY BE UTILIZED FOR BOTTOM ASSEMBLY. FOR DETAILED DIMENSIONS SEE DETAILED VIEWS OF T-BAR.



SEE HUB DETAIL

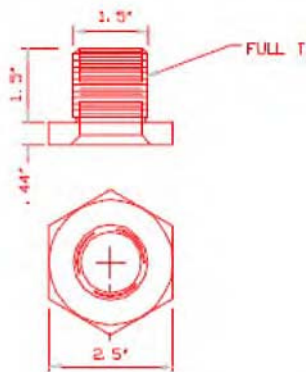
HOLLOW SPIDER FOR 3-WAY ASSEMBLY
NTS

1-1/2" CHASE NIPPLE

MTL: BRZ. 85-5-5-5
NTS

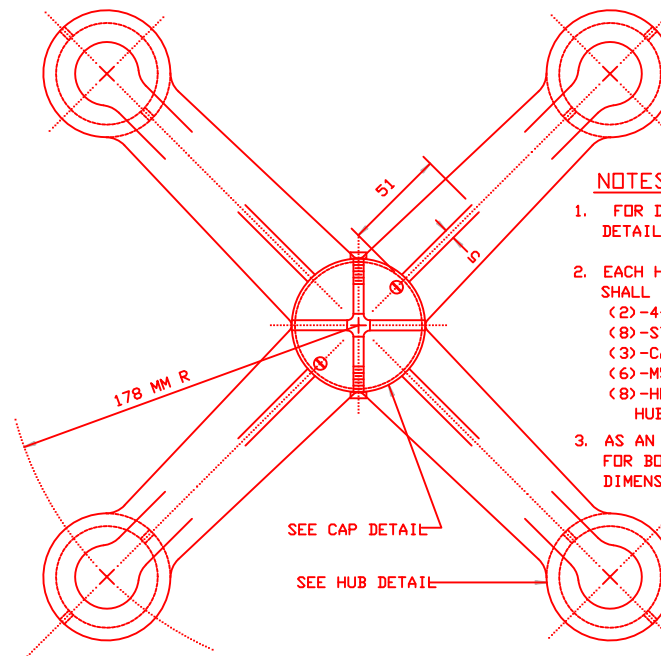
3 WAY HOLLOW BRACKET

Signal Control Products, Inc.
199 Evans Way, Branchburg, NJ 08876-4600
Ph: 908-231-1133 Fax: 908-707-0333



1-1/2" CHASE NIPPLE

MTL: BRZ. 85-5-5-5
NTS



HOLLOW SPIDER FOR 4-WAY ASSEMBLY
NTS

NOTES:

1. FOR DETAILED DIMENSIONS OF 4-WAY SPIDER SEE DETAILED VIEWS OF 2-WAY ASSEMBLY.
2. EACH HOLLOW SPIDER FOR 4-WAY ASSEMBLY SHALL CONSIST OF:
 (2)-4-WAY SPIDERS
 (8)-STD 40 MM CHASE NIPPLES, BRONZE 85-5-5-5
 (3)-CAPS
 (6)-M5 X 12 STN. STL. OR BRASS BH. SCREWS
 (8)-HEAD POSITIONING RINGS, IF NON-SERRATED HUBS.
3. AS AN ALTERNATE: T-BAR MAY BE UTILIZED FOR BOTTOM ASSEMBLY. FOR DETAILED DIMENSIONS SEE DETAILED VIEWS OF T-BAR.

4-Way Hollow Bracket

Signal Control Products, Inc.
 199 Evans Way, Branchburg, NJ 08876-4600
 Ph: 908-231-1133 Fax: 908-707-0333