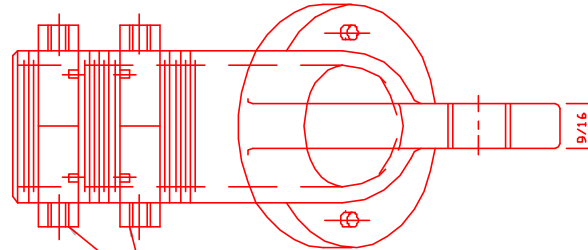
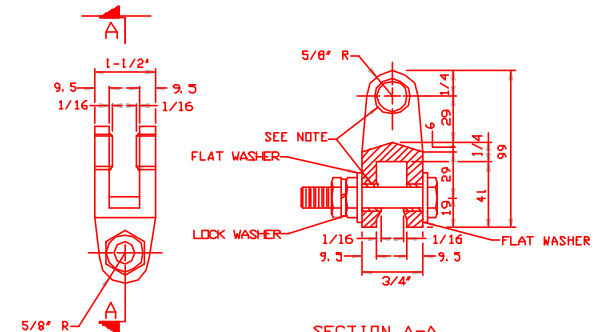


HEX LOCK NUT
MATERIAL: BRONZE, 85-5-5-5

WIRE OUTLET
MATERIAL: BRONZE, 85-5-5-5



HEX LOCK NUTS - BRONZE FURNISH (2) WITH EACH OUTLET NUTS TO BE PROVIDED WITH 4 MM DP BY 5 MM WIDE SLOT FOR SERRATED RING; DRILL & TAP 1/4-20 x 3/8" FOR (2) STN. STL. SDC. HD. SET SCR., ONE EACH SIDE.

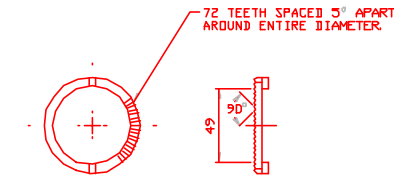


UNIVERSAL JOINT
MATERIAL - BRONZE, 85-5-5-5

SECTION A-A

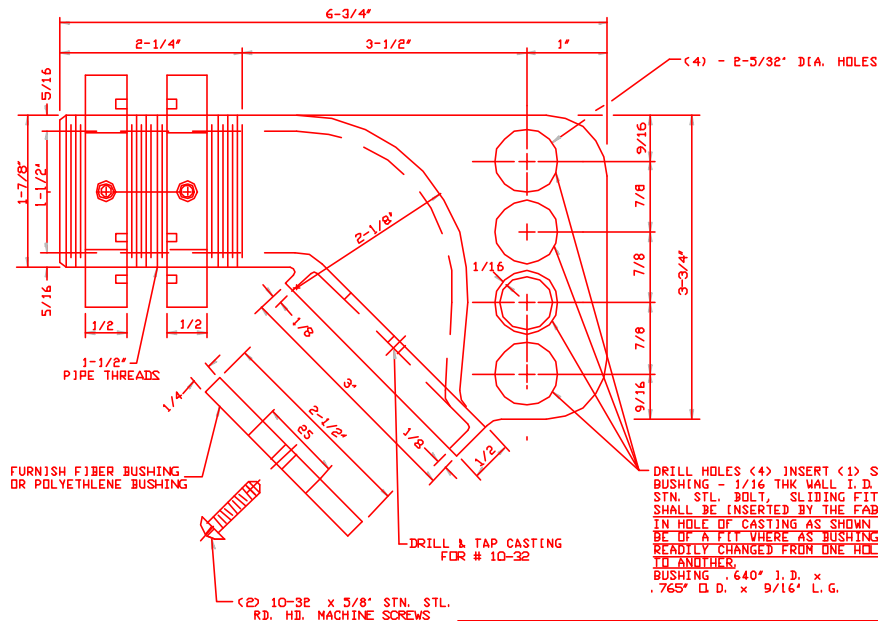
NOTE:
DRILL CASTING FOR C304 STN. STL. 1/16" WALL BUSHINGS, FURNISH & PRESS FIT INTO CASTING

FURNISH WITH EACH UNIVERSAL JOINT:
(1) 5/8" x 3" STN. STL. HEX BOLT
(2) 5/8" STN. STL. HEX NUTS
(2) 5/8" STN. STL. FLAT WASHER
(1) 3/8" STN. STL. LOCK WASHER

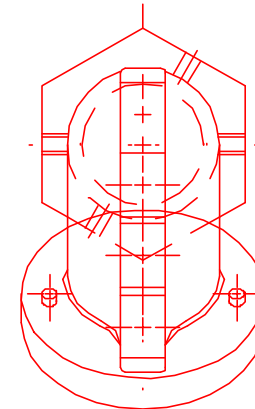


NOTE:
SERRATED POSITIONING RING TO BE PROVIDED WHEN TRAFFIC SIGNAL IS DIRECTLY ATTACHED TO WIRE OUTLET FITTING.

DETAIL OF HEAD POSITIONING RING
MATERIAL: DELRIN



DRILL HOLES (4) INSERT (1) STN. STL. BUSHING - 1/16" THK WALL I.D. TO TAKE STN. STL. BOLT, SLIDING FIT. BUSHING SHALL BE INSERTED BY THE FABRICATOR IN HOLE OF CASTING AS SHOWN AND TO BE OF A FIT WHERE AS BUSHING CAN BE READILY CHANGED FROM ONE HOLE TO ANOTHER.
BUSHING - .640" I.D. x .765" O.D. x 9/16" L.G.



NOTES:
1. ON INSTALLATION THE CONTRACTOR SHALL PLACE THE BUSHING IN THE APPROPRIATE MOUNTING HOLE AS REQUIRED TO OBTAIN VERTICAL POSITIONING AND MAXIMUM VISIBILITY OF THE SIGNAL ASSEMBLY TO THE APPROACH ROADWAY AND AS DIRECTED BY THE ENGINEER.

NJDOT BRONZE TRUSS HANGER

Signal Control Products, Inc.
199 Evans Way, Branchburg, NJ 08876-4600
Ph: 908-231-1133 Fax: 908-707-0333