

Esprit Series Mounts

Product Features

- Low cost
- For use with Esprit® Series Enhanced Systems in corner, pedestal, pole, and wall applications
- Can also be used in parapet applications when used with an appropriate mount adapter
- Constructed of aluminum
- Features cable feedthrough
- Easy to install
- For indoor or outdoor applications

The Esprit® Series mounts include the EWM wall mount, EPM pole mount, ECM101 corner mount, EPP2 pedestal adapter, and the EA4348 EWM-to-Legacy® adapter.

All mounts are aluminum (except for the EPP2, which is made from 304 stainless steel) and feature a feedthrough opening to conceal electrical cables. They have a gray, polyester powder coat finish.

The EWM wall mount is the essential component in this series. It can be used as a stand-alone mount for wall applications or in conjunction with the EPM pole mount, or ECM101 corner mount. When used with the EA4348 adapter, the EWM can also be mounted to a Legacy PP300L, PP301L, or PP4348 parapet mount.

The EWM wall mount is easy to install and requires no special tools. The Esprit Enhanced system attaches directly to the EWM with three stainless-steel screws. The mount can be attached to any vertical load-bearing surface with four fasteners suitable for the mounting surface (not supplied). Stainless-steel nuts and washers are supplied for attaching the EWM to the mounting studs on the pole, corner, and parapet mounts.

The EPP2 pedestal adapter is designed to adapt an Esprit integrated positioning system to pedestal mounts, such as the PM2000 or PM2010. Three stainless-steel screws are provided to secure the Esprit system to the adapter.

The EA4348 EWM-to-Legacy adapter can also be used to retrofit corner-, pole-, and parapet-mounted Legacy systems with Esprit Enhanced systems.

Esprit Enhanced with IR on EPP2 pedestal adapter



EWM wall mount



EPM pole adapter



EPP2 pedestal adapter



EA4348 legacy adapter



ECM101 corner adapter



Technical Specifications

Models

Model	Description
ECM101	Esprit® corner mount; for use with EWM wall mount
EPP2	Esprit pedestal adapter; for use with PM2000/PM2010 pedestal mount
EPM	Esprit pole adapter; for use with EWM wall mount
EWM	Esprit wall mount
EA4348	EWM-to-Legacy® adapter

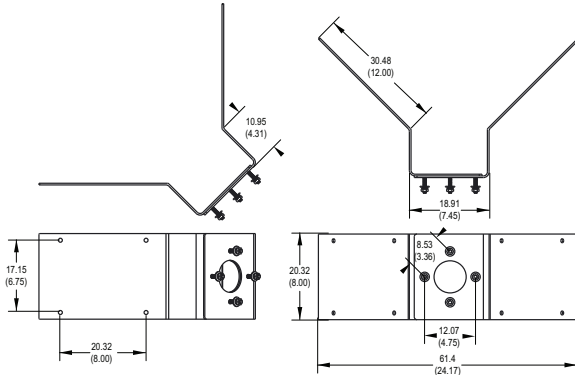
General

Parameter	Specification	
Construction	304 Stainless Steel for EPP2, Aluminum for ECM101, EPM, EWM, EA4348	
Finish	Gray polyester powder coat	
Mounting method		
ECM101	Attached to mounting surface with eight fasteners (not supplied)	
EPP2	Attached to a compatible mount (such as the PM2000/PM2010) with four fasteners (not supplied)	
EPM	Attached to a pole with three stainless-steel straps (supplied). Straps fit 3-inch (7.62 cm) to 8-inch (20.32 cm) diameter pole.	
EWM	Attached to the mounting surface with four fasteners (not supplied)	
EA4348	Attached to Legacy corner, pole, or parapet mount with four fasteners (nuts and split lock washers supplied with Legacy mount)	
Cable entry	Cable feeds through the EWM mount into the Esprit system; ECM101, EPA, and EPM mounts have a cable feedthrough hole in center	
Maximum load		
EPP2	N/A	
ECM101	75 pounds (34.0 kg)	
EPM	100 pounds (45.4 kg)	
EWM	50 pounds (22.7 kg)	
EWM with EA4348	30 pounds (13.6 kg)	
Weight	Unit Shipping	
EPP2	1.8 lb (0.8 kg)	2.2 lb (1.0 kg)
ECM101	3.0 lb (1.4 kg)	6.0 lb (2.7 kg)
EPM	2.2 lb (1.0 kg)	4.0 lb (1.8 kg)

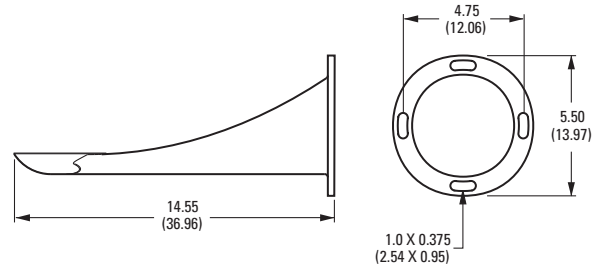
Parameter	Specification	
EWM	1.5 lb (0.7 kg)	3.0 lb (1.4 kg)
EA4348	1.2 lb (0.5 kg)	3.0 lb (1.4 kg)

Product Drawings

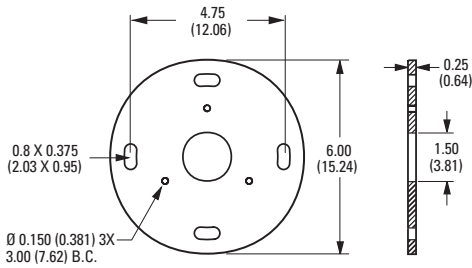
ECM101



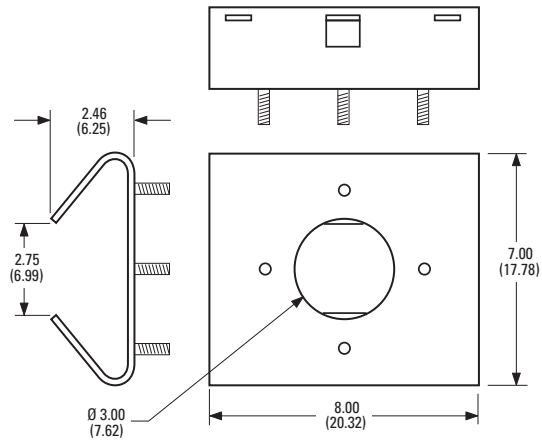
EWM



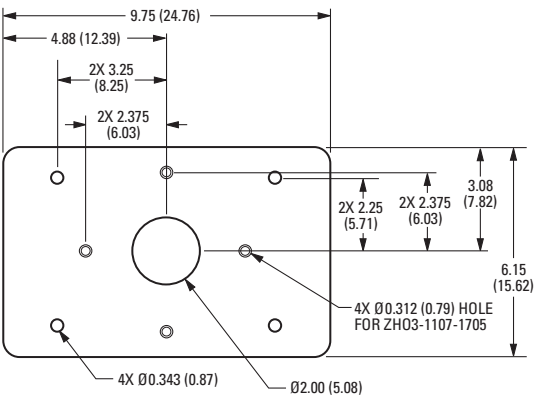
EPP2



EPM



EA4348





Pelco by Schneider Electric
625 W. Alluvial, Fresno, California 93711 United States
(800) 289-9100 Tel
(800) 289-9150 Fax
+1 (559) 292-1981 International Tel
+1 (559) 348-1120 International Fax
www.pelco.com



International Standards Organization
Registered Firm; ISO 9001 Quality System

⚠ WARNING: Cancer and Reproductive Harm -
www.P65Warnings.ca.gov.
⚠ ADVERTENCIA: Cáncer y Daño Reproductivo -
www.P65Warnings.ca.gov.
⚠ AVERTISSEMENT: Cancer et Troubles de
l'appareil reproducteur - www.P65Warnings.ca.gov.

Pelco, the Pelco logo, and other trademarks associated with Pelco products referred to in this publication are trademarks of Pelco, Inc. or its affiliates. ONVIF and the ONVIF logo are trademarks of ONVIF Inc. All other product names and services are the property of their respective companies. Product specifications and availability are subject to change without notice.

© Copyright 2019, Pelco, Inc. All rights reserved.