

# TCPS

## ISOLATION MODULES

The TCPS Isolation Modules are used to interface MS SEDCO's TC-Series of vehicle and pedestrian sensors with traffic control computers and protect the TC-Series sensors from potential damage caused by power problems inherent to intersections.

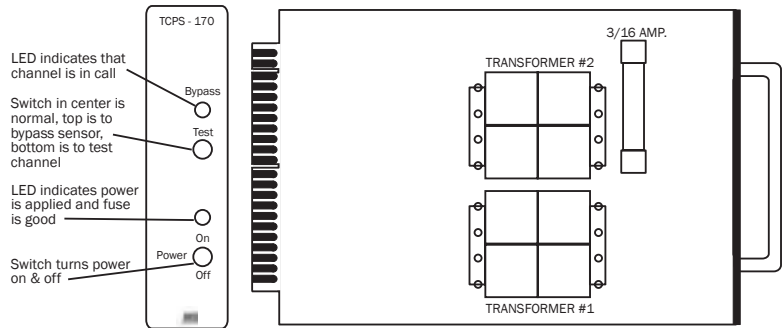
Model **TCPS-170** offers a single channel isolation input to 170, 179 and 2070 type controllers, configuring one 12V AC power output capable of operating up to two TC-Series sensors.

Model **TCPS-NEMA** offers a dual channel isolation input to NEMA Rack type controllers, configuring two 12V AC power outputs for operating up to two TC-Series sensors.

Model **TCPS-IRM** offers a single channel isolation input to NEMA Shelf type or other custom controllers, configuring one 24V AC power output for operating one TC-Series sensor.

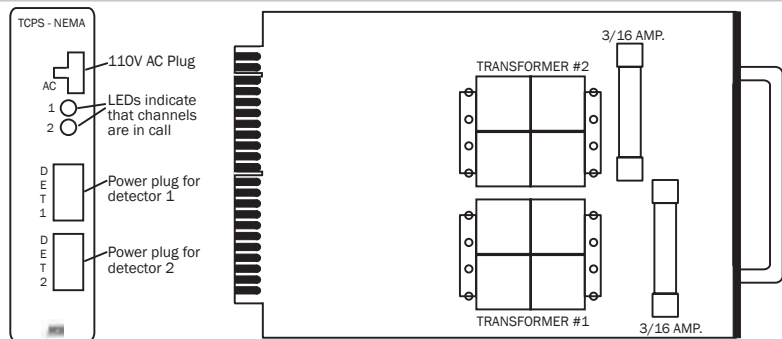
### TCPS-170

- Powers up to Two Sensors from Single Module
- 1-1/8" Slot Clearance
- Card Dimensions: 6-7/8"l x 4-1/2"w
- 110V AC, 60 Hz Power Required
- 12V AC Output Rating: 900mA
- Test Switch: Up to Bypass - Down to Test
- Power Switch: Up is ON - Down is OFF
- Fuse rated: 3/16 Amp



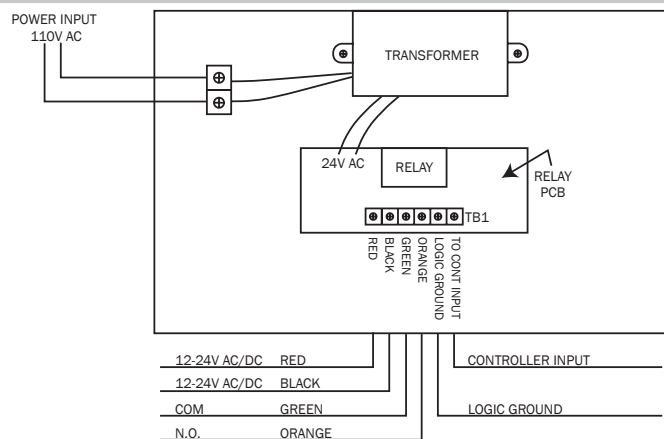
### TCPS-NEMA

- Powers up to Two Sensors from Single Module
- 1-1/8" Slot Clearance
- Card Dimensions: 6-7/8"l x 4-1/2"w
- 110V AC, 60 Hz Power Required (110V AC Wire Harness Included)
- Two - 12V AC Output Ratings: 450mA each
- Fuse rated: 3/16 Amp



### TCPS-IRM

- Powers One Sensor
- Card Dimensions: 5"l x 4"w x 2-1/4"h
- 110V AC, 60 Hz Power Required
- 24V AC Output Rating: 1000mA
- Relay Rating: Coil = 15 Amps; 24V AC Contacts = 115V



SENSORS & SWITCHES

8701 Castle Park Drive • Indianapolis, Indiana 46256  
 Phone: (800) 842-2545 / (317) 842-2545  
 Fax: (800) 849-3387 / (317) 849-3387