

See Your Traffic Differently with Intuicom's Broadband Solutions.

With standard-setting software and field-proven, rugged broadband installations, Intuicom is the premier provider of reliable, robust solutions for point-to-point, point-to-multipoint, and mesh networks. From high-bandwidth wireless backhaul solutions to long-distance, customized requirements, customers trust Intuicom to meet their needs. Our accessible, unsurpassed customer service will make sure your questions are answered. And our deep technical expertise in wireless, networking, and installations ensure a successful deployment each time.

Intuicom provides solutions across a spectrum of technologies and protocols, including:

- 802.11a/b/g/n
- WiFi
- 2.4GHz, 4.90GHz, and 5.8GHz
- Broadband, Ethernet, Serial, and Contact Closure

To learn how Intuicom can help with all of your wireless needs, contact us today at (303) 449- 4330 or broadband@intuicom.com.

2, 3 and 4 radio options



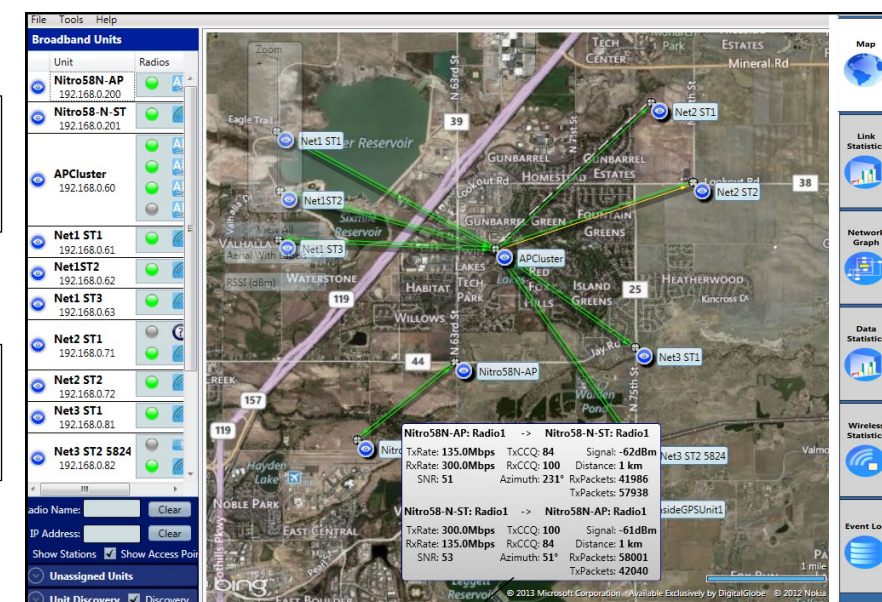
Nitro58™ units include GPS, external RSSI indicator & reset button



Panel, Sector, Omni, and Directional Antenna options



Automatically Discover, Configure, Optimize, and Secure Your Intuicom Broadband Wireless Networks



Self-organizing, automated discovery is faster than ever.

Drag and Drop units for automatic configuration saves you valuable time

View real-time, bi-directional info and other data at your fingertips

Tabs make it easy to access unique features such as topology diagrams, event logs, and individual or network-wide performance stats.

Intuicom's Most Innovative Management Software

More information on network performance. Detailed reporting. Multiple email alarm options. These are just some of the exclusive, advanced features in the all-new BroadBandPro™ Enterprise version 4.0.

Even better, this ground-breaking software still offers drag-and-drop configuration for easy programming or re-assignment of broadband units (patent pending). Built-in utilities such as Bandwidth Test, Ping Test, Spectrum Analyzer, and Site Survey provide everything you need to fine-tune your network in a single place. There’s simply no better way to automatically discover, configure, optimize, and secure Intuicom wireless broadband networks.

Exclusively in BroadBandPro Enterprise:

- Reports Center for detailed data
- Alarms Center with notifications
- Security Center with roles
- Real-time, bi-directional link data
- Event logging
- Open multiple configuration windows simultaneously

Monitor the Information You Care About

Alarm Center

RSSI (dBm)

☐ e-Mail Alarm Notification

☒ Log Alarm Notification

Alarm Threshold

-67

dBm

Clear Threshold:

-60

dBm

☒ e-Mail Alarm Notification

☒ Log Alarm Notification

Alarm Threshold

35

dB

Clear Threshold:

41

dB

☐ e-Mail Alarm Notification

☒ Log Alarm Notification

Alarm Threshold

0

%

Clear Threshold:

1

%

☒ e-Mail Alarm Notification

☒ Log Alarm Notification

Alarm Threshold

0

%

Clear Threshold:

1

%

☐ e-Mail Alarm Notification

☒ Log Alarm Notification

Alarm Threshold

3

Mbps

Clear Threshold:

5

Mbps

☒ e-Mail Alarm Notification

☒ Log Alarm Notification

Alarm Threshold

2

Mbps

Clear Threshold:

5

Mbps

☒ e-Mail Alarm Notification

☒ Log Alarm Notification

Alarm Threshold

444

ms

Clear Threshold:

440

ms

Auto Tune

Link Snapshot...

Alarm Recipients:

SMTP Server:

Port:

25

☒ Connect Using SSL

SMTP Login:

Password:

Ping Latency

Avg. SNR

Avg. Tx CCQ

Avg. Rx CCQ

6.8 ms

34.918

36.071

56.828

Min: BBS5824 0 ms

Max: Net1 ST1 12 ms

Min: Encom58 0

Max: Net1 ST1 61

Min: Encom58 0

Max: Nitro58-N-ST 88

Min: Encom58 0

Max: Net3 ST1 97

Date

Message

4/1/2013 1:53:10 PM

Unit 'APCluster': link to 'Net1 ST1' Alarm 'Tx CCQ (%)' has been cleared.

4/1/2013 1:53:10 PM

Unit 'APCluster': link to 'Net1 ST1' Alarm 'Tx Rate (Mbps)' has been cleared.

4/1/2013 1:53:10 PM

Unit 'APCluster': link to 'Net1ST2' Alarm 'Tx Rate (Mbps)' has been cleared.

4/1/2013 1:53:10 PM

Unit 'APCluster': link to 'Net1 ST3' Alarm 'Tx Rate (Mbps)' has been cleared.

4/1/2013 1:53:10 PM

Unit 'APCluster': link to 'Net2 ST2' Alarm 'Rx CCQ (%)' has been cleared.

In another industry first, continuous event logging and performance dashboard lets you see what’s been happening on the network while you were away – for up to 72 hours.

The Alarm Center is the heart of the new BroadBandPro Enterprise. Set the limits for visual cues regarding link performance, choose the parameters most important to you to monitor and log, and control who receives email notifications.

Information You Need—When You Need It

Drag any broadband unit to the target and instantly see real-time data for every radio — in both directions. No other manufacturer provides this type of detail to help you tune your radios for maximum effect.

Monitor All Wireless Links: APCluster

Stop Monitoring

APCluster: Radio3 -> Net3 ST1: Radio1

APCluster: Radio3 <- Net3 ST1: Radio1

APCluster: Radio3 -> Net3 ST2 5824: Radio2

APCluster: Radio3 <- Net3 ST2 5824: Radio2

Wireless Network Topology

Tree | Full | Relayout

Intuicom’s exclusive Topology View provides a helpful view of network connections at-a-glance. Plus, you can access any radio’s configuration menu by double-clicking in any view in BroadBandPro Enterprise.

Reports Center Puts You in Control

Take complete control of your network with the first of its kind Reports Center. View or output configuration and performance reports on an individual unit or the entire network, check on unlinked radios, and save a visual network topology diagram (patent pending).

Report Center

Radio Configuration

Wireless Statistics

Network Topology

Broken Links

SEE YOUR TRAFFIC DIFFERENTLY
with BroadBandPro™ Enterprise FREE.
See Your Traffic Differently with the no-cost Field Version of BroadBandPro™ Enterprise Management Software.
Download your version at www.Intuicom.com/bbpe.