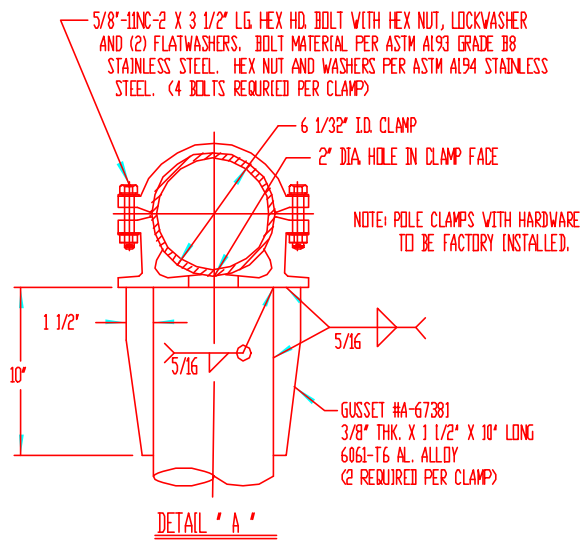
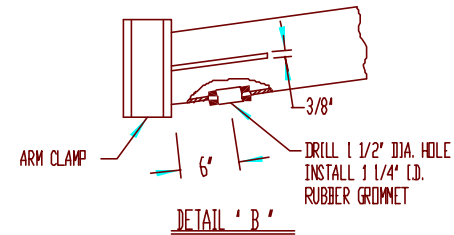
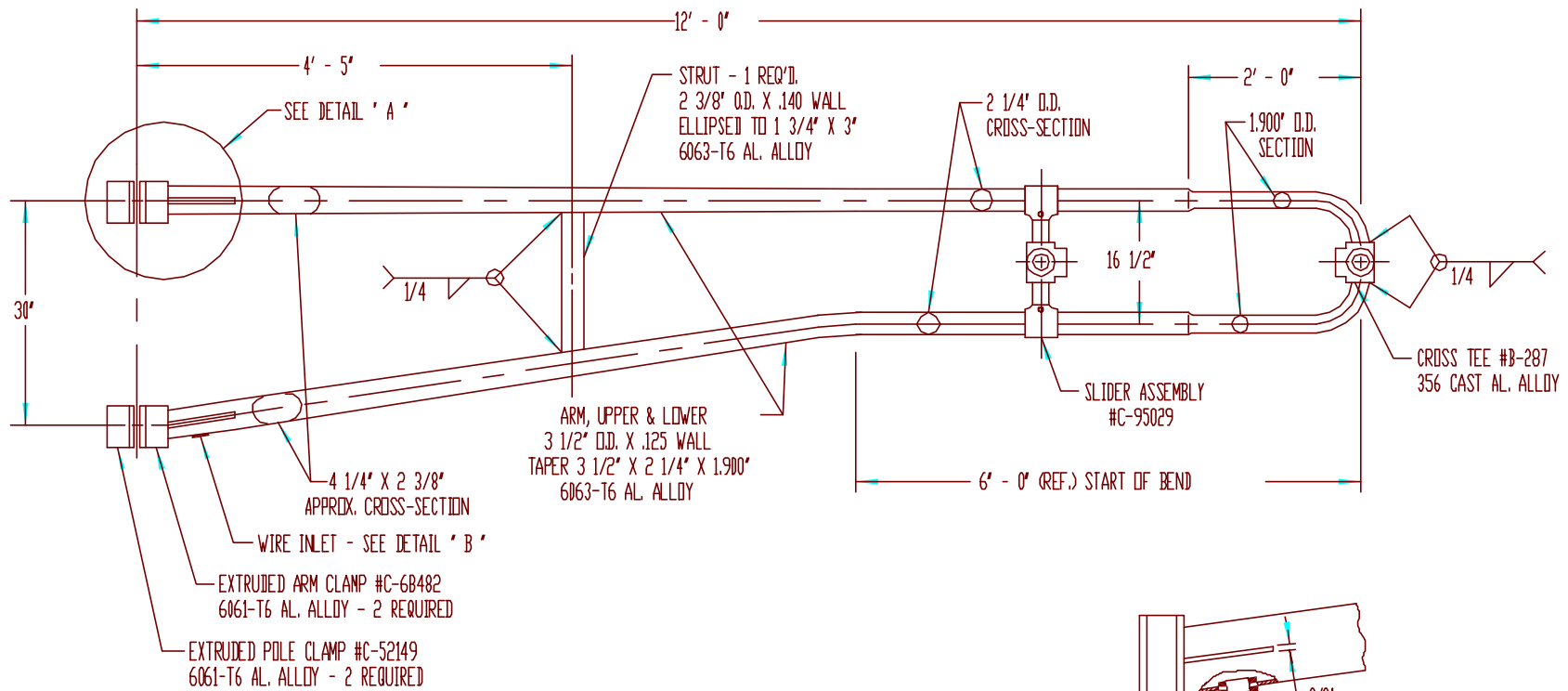


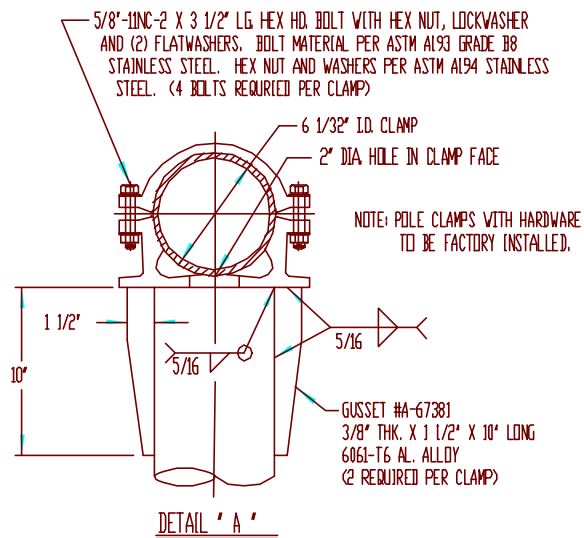
NOTE:
 1.- USE 4043 WELD WIRE.
 2.- 6063 ASSEMBLY .375 WALL OR LESS TO BE HEAT-TREATED TO T6 TEMPER AFTER WELDING.



					P&K	
					P&K POLE PRODUCTS, INC. 84 Foundry St., Newark, N.J.	
ALL	DESCRIPTION	DATE	BY	CR	REVISED	TITLE
						10 FT. TROMBONE ARM ASSEMBLY TR1035560-10
					BY: DEL ON: W.V.W.	DATE: 10-09-81 10-09-81
						QTY: 1 C-69377
					ORDER: NEW JERSEY DEPT. OF TRANSPORTATION	SCALE: NONE

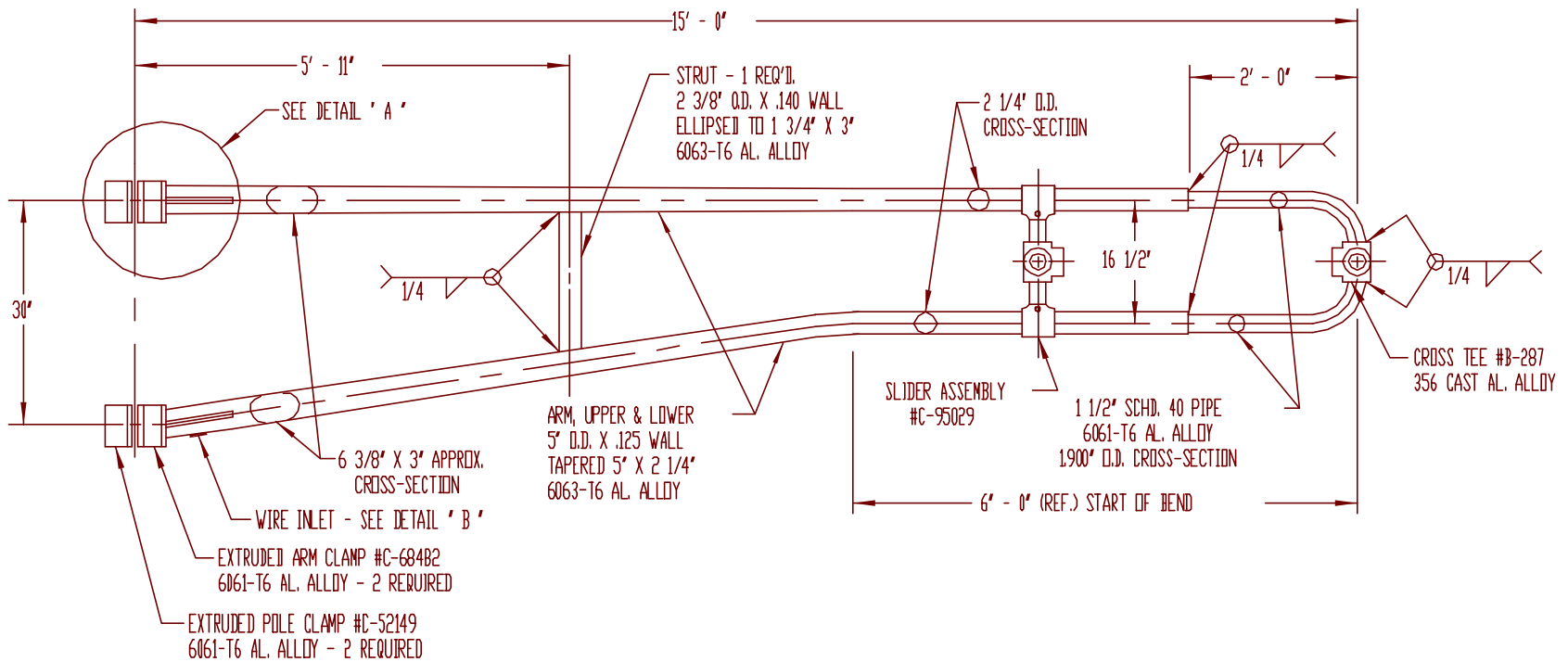


- NOTE:
1.- USE 4043 WELD WIRE.
2.- 6063 ASSEMBLY .375 WALL OR LESS TO BE HEAT-TREATED TO T6 TEMPER AFTER WELDING.

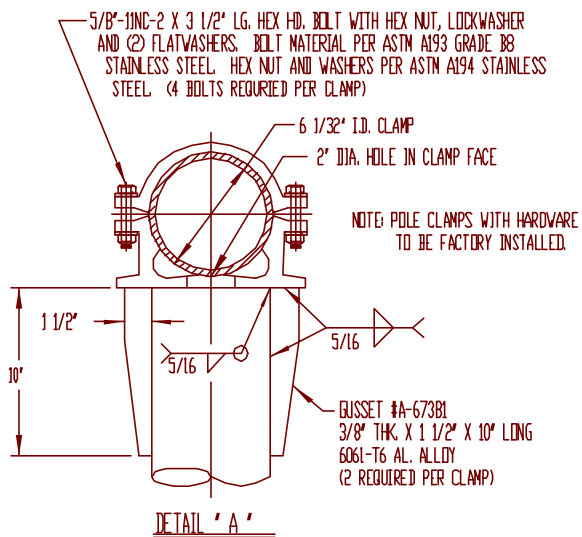
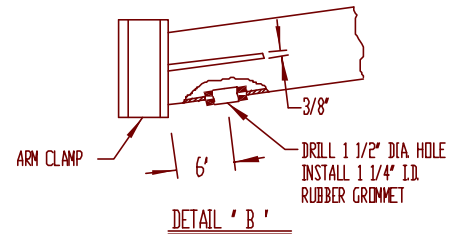


P&K

P&K POLE PRODUCTS, INC. 84 Foundry St., Newark, N.J.				
12 FT. TROMBONE ARM ASSEMBLY TR1235560-10				
BY	HN	12-18-80	CHK	C-77170
CH	V.V.W.	12-18-80		
CR				
NEW JERSEY DEPT. OF TRANSPORTATION			NONE	

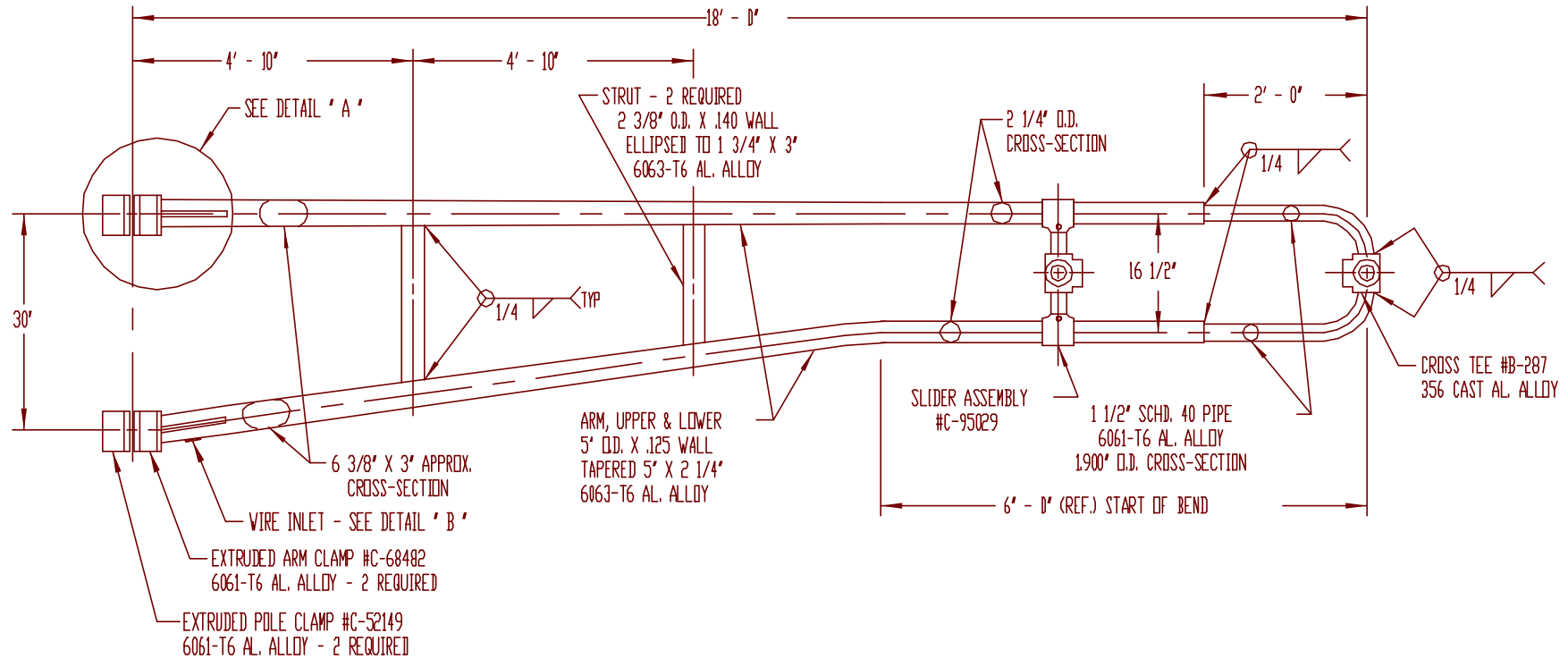


NOTE:
1.- USE 4043 WELD WIRE.
2.- 6063 ASSEMBLY .375 WALL OR LESS TO BE HEAT-TREATED TO T6 TEMPER AFTER WELDING.

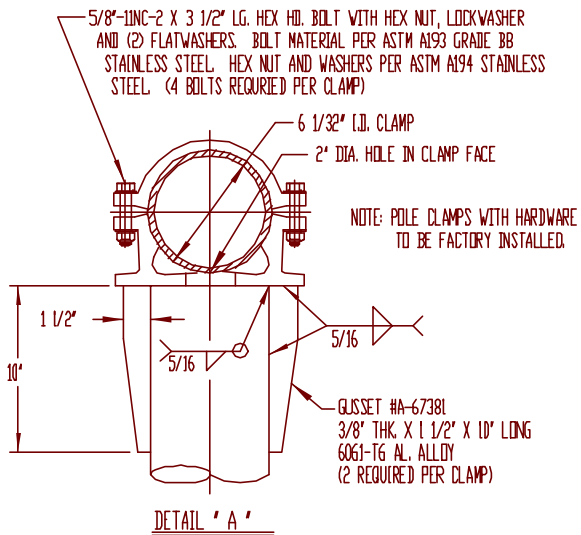
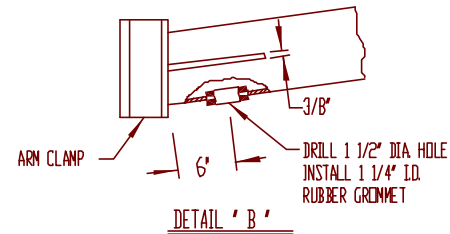


P&K

ALL					REV.	P&K POLE PRODUCTS, INC. 84 Foundry St., Newark, N.J.		
	DESCRIPTION	DATE	BY	CR	DATE	TITLE 15 FT. TROMBONE ARM ASSEMBLY TR1550560-10		
					DRN. NO.	12-14-77	DRG. NO.	C-69378
					OR. V.V.W.	12-14-77		
					CHECKED	NEW JERSEY DEPT. OF TRANSPORTATION		SCALE NONE

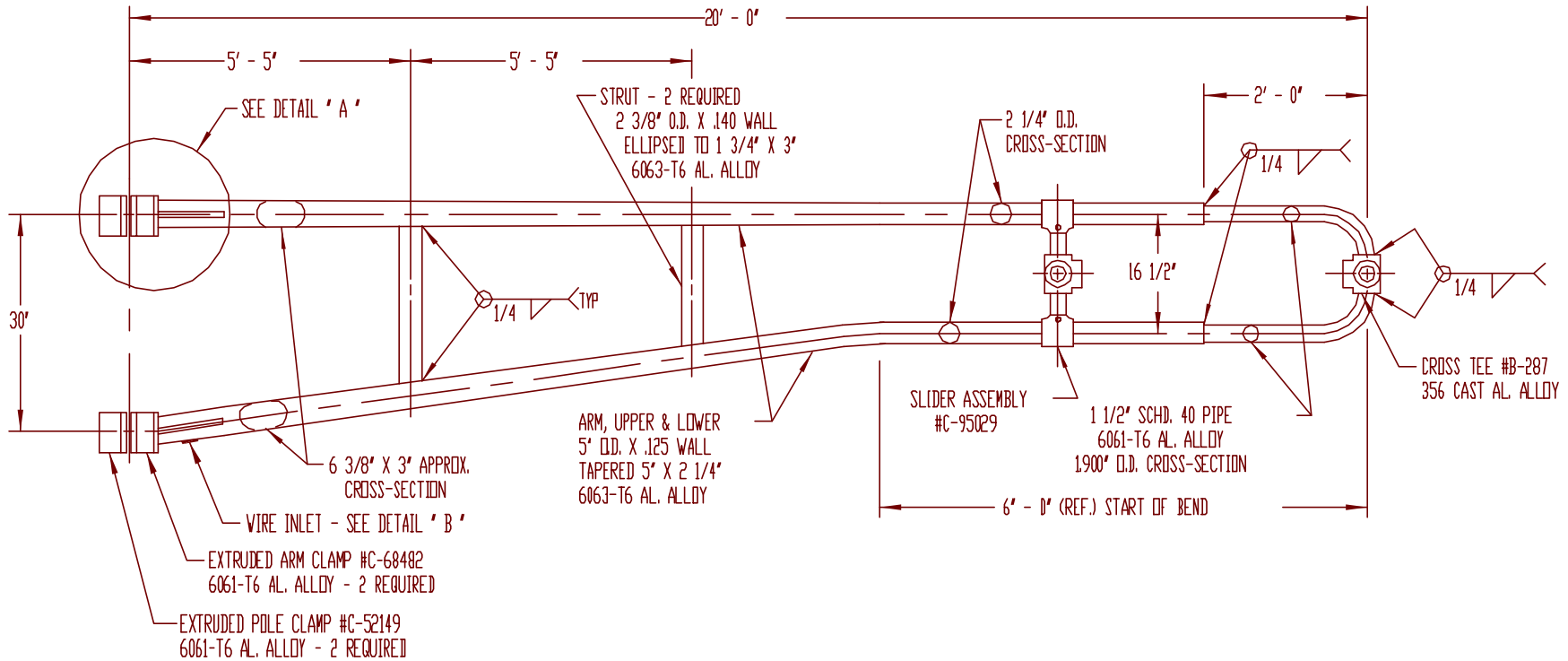


- NOTE:
1.- USE 4043 WELD WIRE.
2.- 6063 ASSEMBLY .375 WALL OR LESS TO BE HEAT-TREATED TO T6 TEMPER AFTER WELDING.

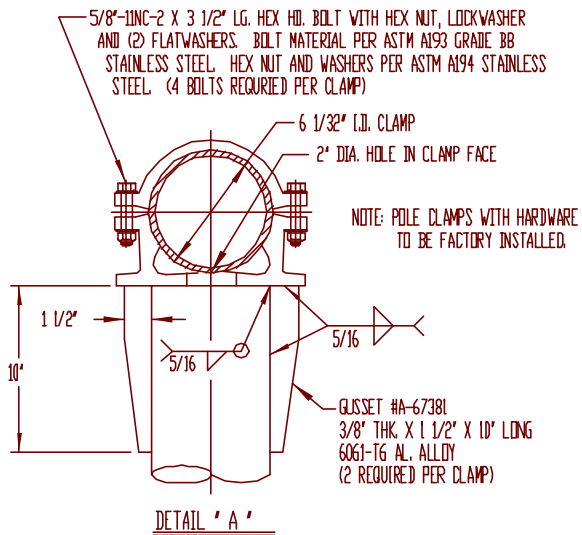
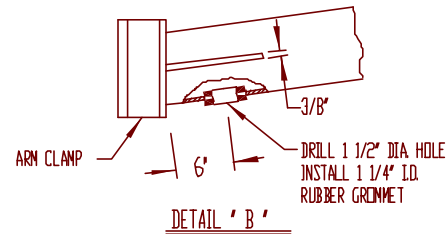


P&K

P&K POLE PRODUCTS, INC. 84 Foundry St., Newark, N.J.				
TITLE 18 FT. TROMBONE ARM ASSEMBLY TR1850560-10				
DR	NMS.	07-07-06	DATE	REV. NO. C-90639
CH	AW.	07-07-06	DATE	
CR	AW.		DATE	
CHECKED NEW JERSEY DEPT. OF TRANSPORTATION			NONE	

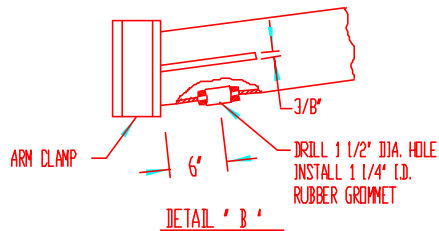
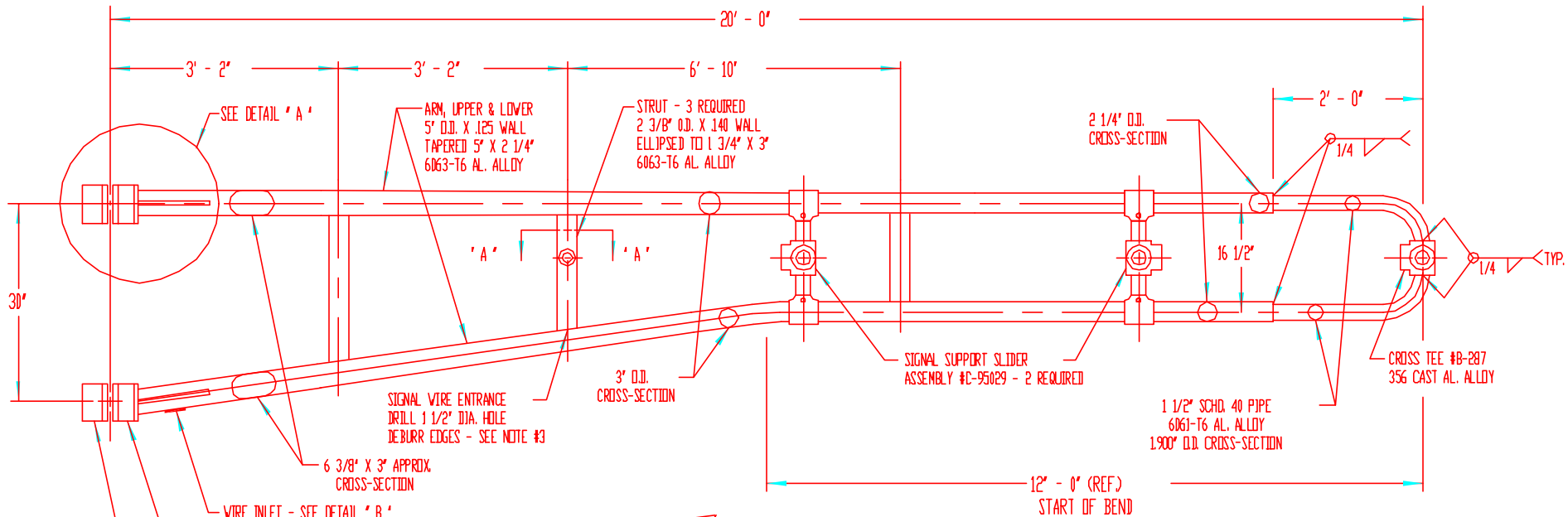


- NOTE:
 1.- USE 4043 WELD WIRE.
 2.- 6063 ASSEMBLY .375 WALL OR LESS TO BE HEAT-TREATED TO T6 TEMPER AFTER WELDING.

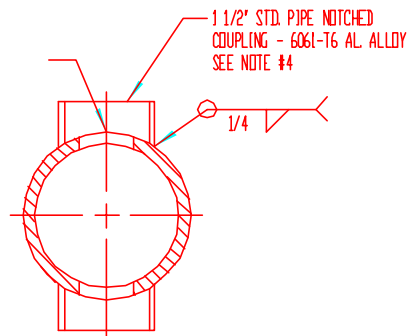


P&K

ALL					DESCRIPTION		DATE	BY	CR	REV.	P&K POLE PRODUCTS, INC. 84 Foundry St., Newark, N.J.			
										TITLE		20 FT. TROMBONE ARM ASSEMBLY		
										PART OR CHANGE		TR2050560-10		
										DR	NMS.	12-14-77	DWG. NO. C-69379	
										CR	V.V.W.	12-14-77		
										CHECKED	NEW JERSEY DEPT. OF TRANSPORTATION		SCALE	NONE



DRILL 1 1/2" DIA. HOLE
DEBURR EDGES

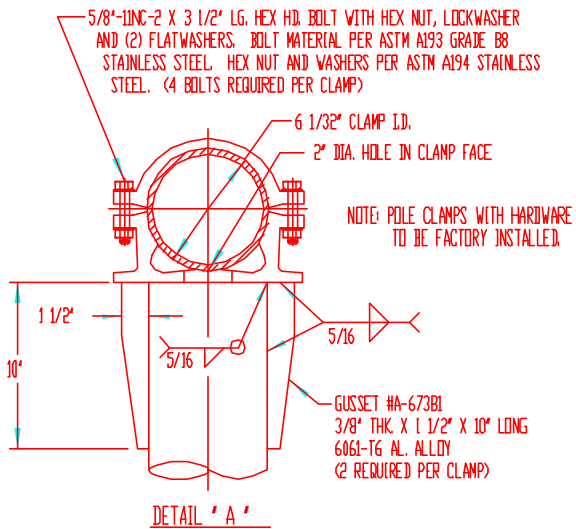


NOTE: ARM SUPPLIED WITH THE FOLLOWING HARDWARE
MOUNT (1) FIXED MID-MOUNT TRAFFIC SIGNAL

- (2) 1 1/2" STD. PIPE NIPPLE X 6" LONG
- (2) 90 DEGREE CAST AL. ALLOY ELBOW
- (2) 1 1/2" STD. PIPE BRONZE CHASE NIPPLE
- (3) 1 1/2" STD. PIPE THREADED PIPE PLUGS

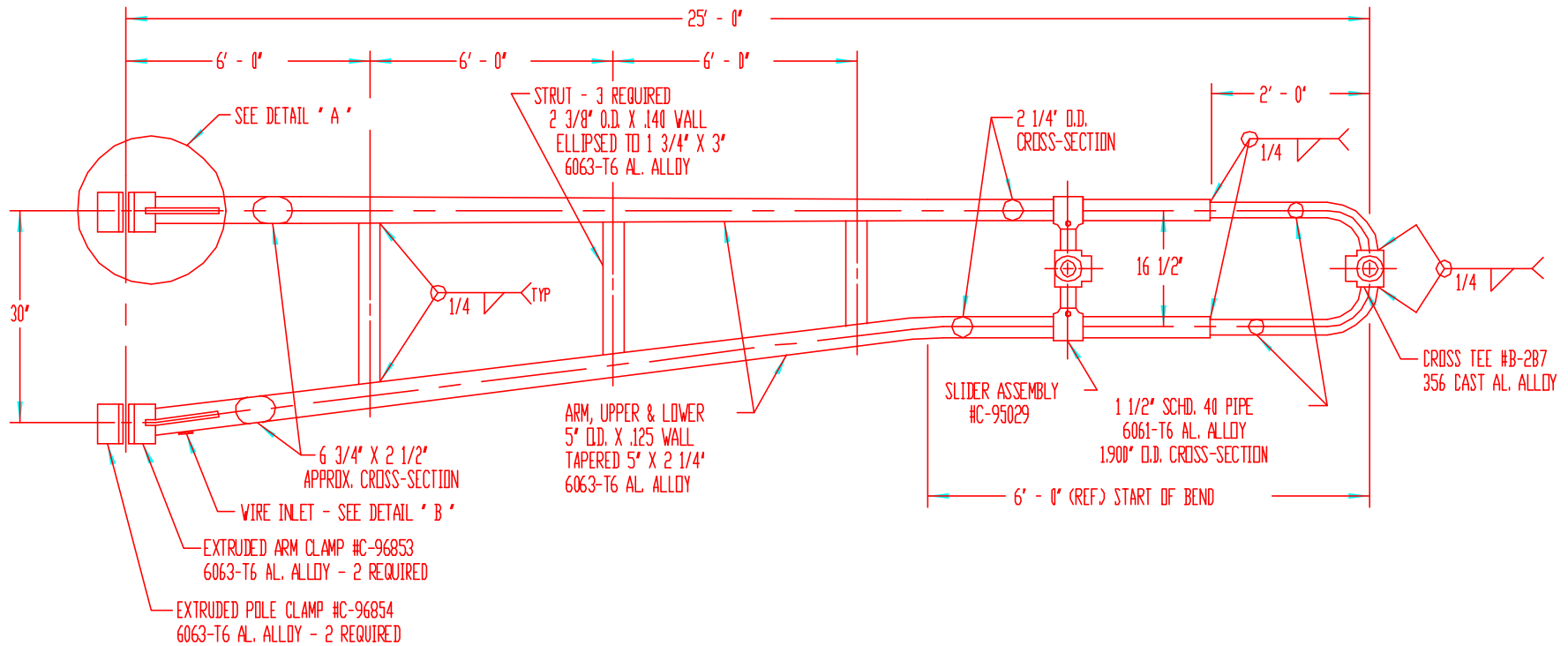
NOTE:

- 1. - USE 4043 WELD WIRE.
- 2. - 6063 ASSEMBLY .375 WALL OR LESS TO BE HEAT-TREATED TO T6 TEMPER AFTER WELDING.
- 3. - BEFORE WELDING STRUT PROVIDE PULL WIRE FOR ELECTRICAL WIRING TO MID-MOUNT SIGNAL.

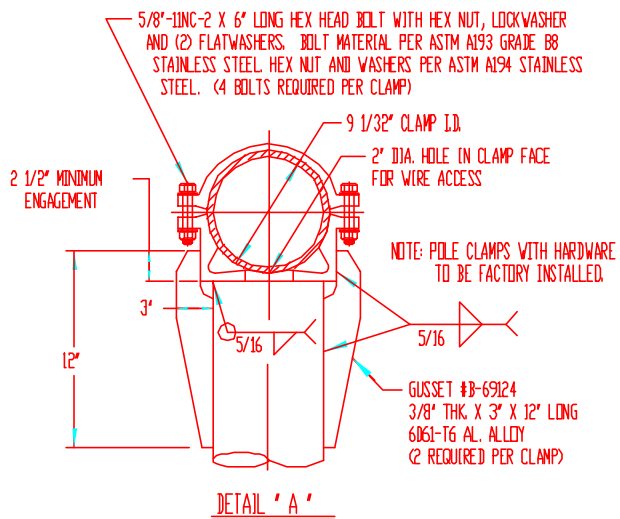
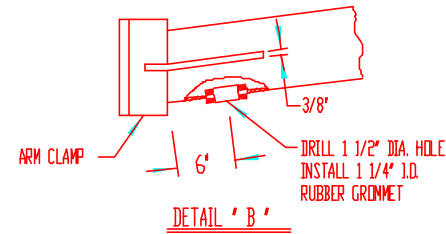


P&K

					P&K POLE PRODUCTS, INC. 84 Foundry St., Newark, N.J.			
ALT.	REVISION	DATE	BY	CHK	TITLE 20 FT. TROMBONE ARM ASSEMBLY TR2050560-11			
					MATERIAL NONE			
					PRICE IN DOLLARS			
					MATERIALS 09-24-88		PAGE NO. 09-24-88	
					CITY NEW JERSEY		C-94613	
					ORDER NEW JERSEY DEPT. OF TRANSPORTATION			
					SCALE NONE			

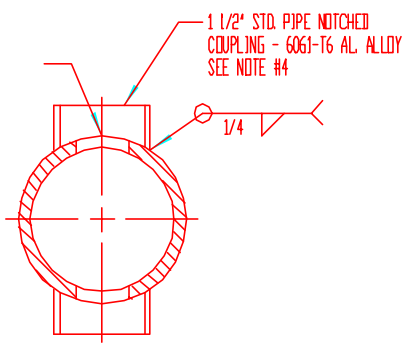
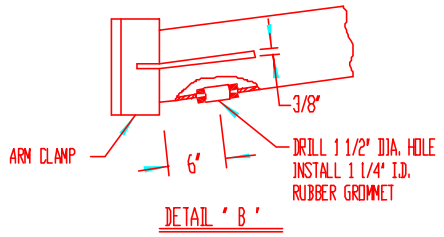
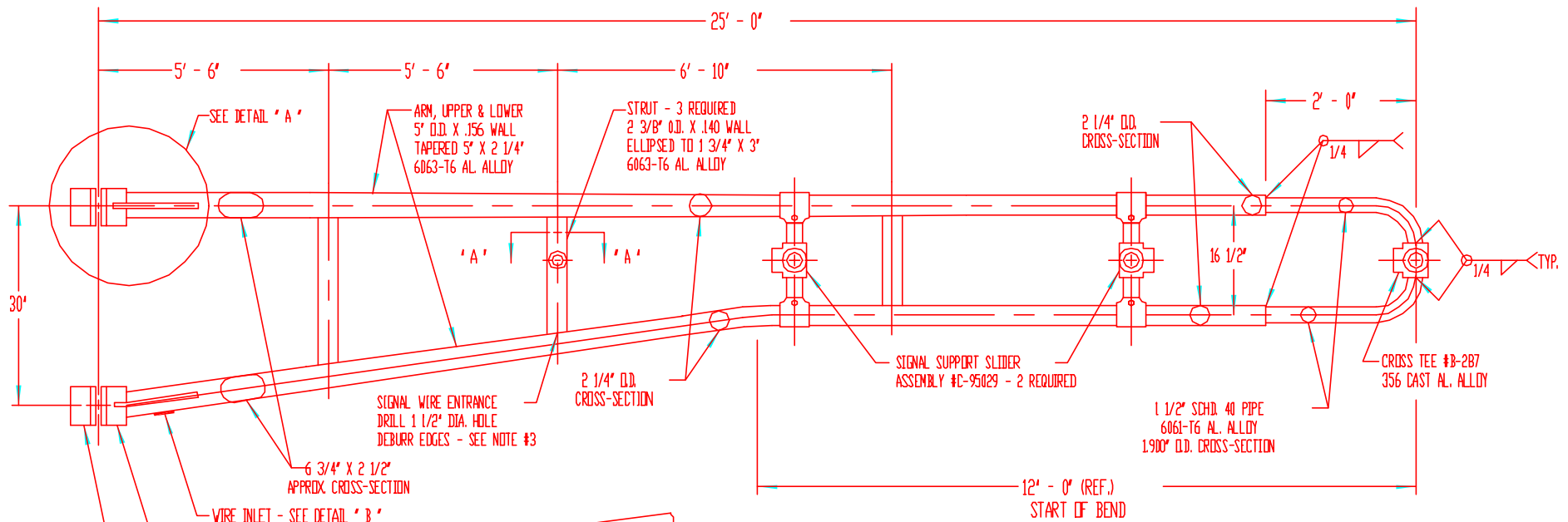


NOTE:
 1.- USE 4043 WELD WIRE.
 2.- 6063 ASSEMBLY .375 WALL OR LESS TO BE HEAT-TREATED TO T6 TEMPER AFTER WELDING.



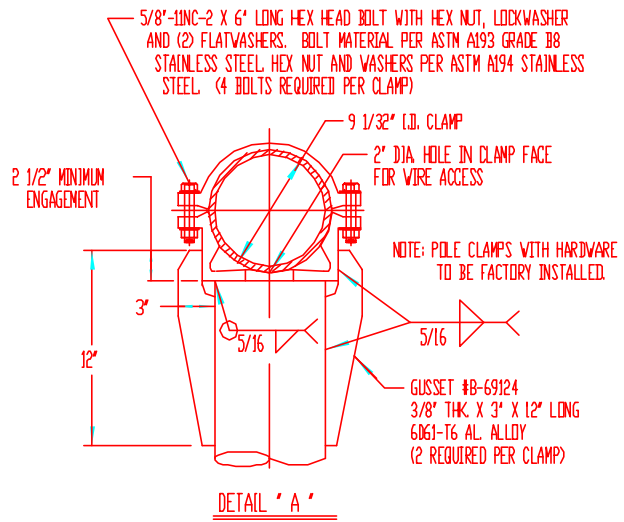
P&K

REV.					P&K POLE PRODUCTS, INC. 84 Foundry St., Newark, N.J.			
AL.	EXAMIN	DATE	BY	CR.	TITLE 25 FT. TROMBONE ARM ASSEMBLY TR2550590-10			
DRAWN BY					DATE			
CHECKED BY					M. H.M.S. 10-11-86		DWG. NO.	
DESIGNED BY					C. V.W.W. 10-11-86		C-91184	
CROSS-CHECKED BY					APP.		SCALE	
NEW JERSEY DEPT. OF TRANSPORTATION					NONE			



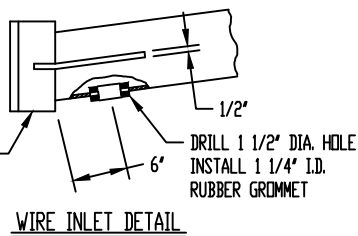
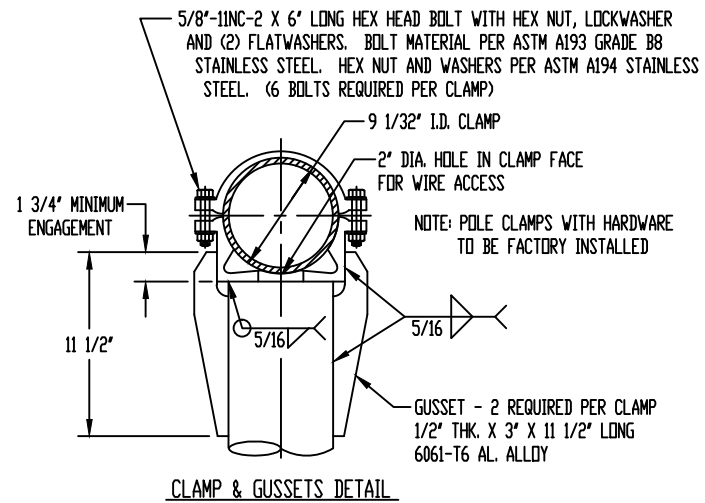
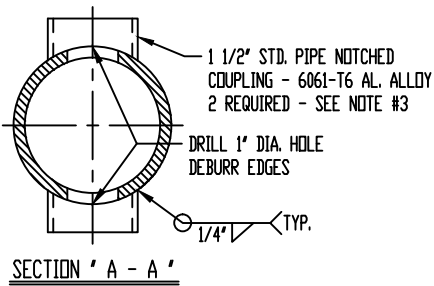
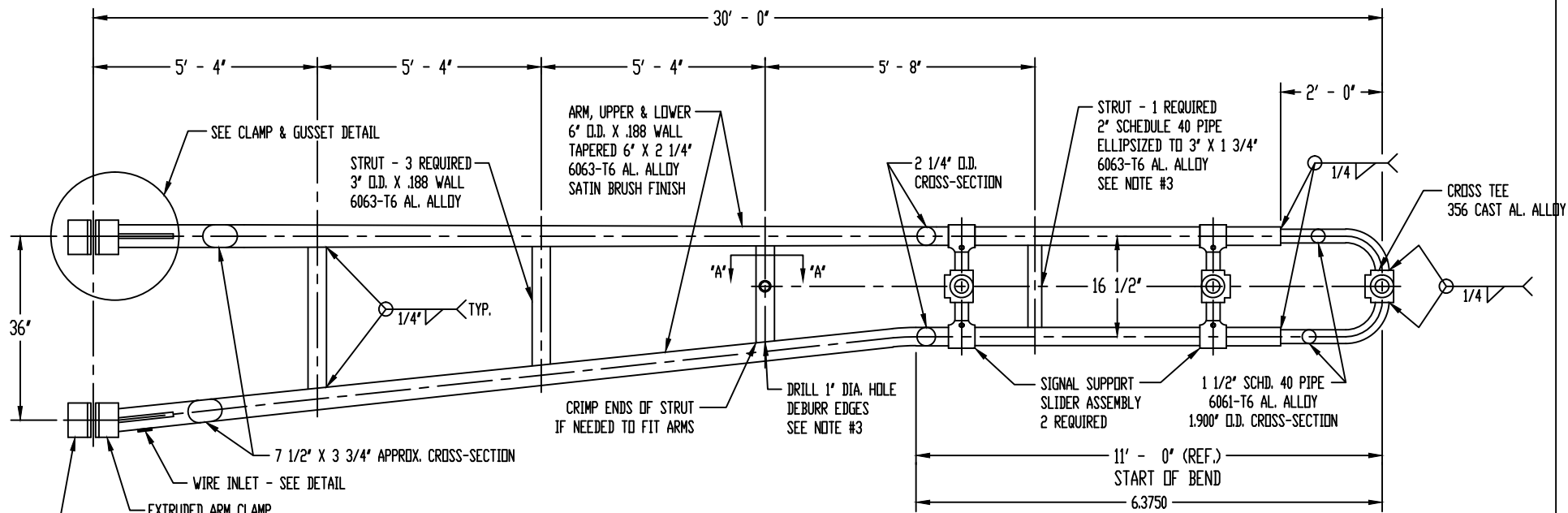
- NOTE:
1. - USE 4043 WELD WIRE.
 2. - 6063 ASSEMBLY .375 WALL OR LESS TO BE HEAT-TREATED TO T6 TEMPER AFTER WELDING.
 3. - BEFORE WELDING STRUT PROVIDE PULL WIRE FOR ELECTRICAL WIRING TO MID-MOUNT SIGNAL.

- NOTE: ARM SUPPLIED WITH THE FOLLOWING HARDWARE MOUNT (1) FIXED MID-MOUNT TRAFFIC SIGNAL
- (2) 1 1/2" STD. PIPE NIPPLE X 6" LONG
 - (2) 90 DEGREE CAST AL. ALLOY ELBOW
 - (2) 1 1/2" STD. PIPE BRONZE CHASE NIPPLE
 - (3) 1 1/2" STD. PIPE THREADED PIPE PLUGS




P&K

P&K					P&K POLE PRODUCTS, INC. 84 Foundry St., Newark, N.J.	
TITLE					25 FT. TROMBONE ARM ASSEMBLY	
PART NO.					TR2550690-11	
DR.	N.K.S.	11-27-87	CHK.	V.J.	11-27-87	C-92773
APP.			APP.			
CUSTOMER					NEW JERSEY DEPT. OF TRANSPORTATION	
REVISION					NONE	



- NOTE:
- USE 4043 WELD WIRE.
 - 6063-T6 AL. ALLOY ASSEMBLY TO BE HEAT-TREATED TO T6 TEMPER AFTER WELDING.
 - BEFORE WELDING STRUT DRILL WIRING HOLES IN STRUT AND LOWER ARM. PROVIDE PULL WIRE FOR ELECTRICAL WIRING TO MID-MOUNT SIGNAL.

REVISIONS					MATERIAL			
ALT.	DESCRIPTION	DATE	BY	CHK.	STOCK SIZE	FINISH OR TEMPER	TITLE	DRG. NO.
							30' - 0" TROMBONE ARM ASSEMBLY WITH MIDMOUNT 10'-0" BACK	
							DR: W.W.V. 03-07-12	DWG. NO. 11448
							CHK: S.A.F. 03-07-12	
							APP:	
							SCALE: NONE	