

ITEM	DESCRIPTION	QUANTITY	UNIT	ARM SIZE	ARM TUBE SIZE	ARM TUBE WALL THICKNESS	ARM TUBE SCHEDULE	ARM TUBE WEIGHT PER FOOT	ARM TUBE LENGTH	ARM TUBE END FINISH	ARM TUBE END TOLERANCE	ARM TUBE END FINISH	ARM TUBE END TOLERANCE	ARM TUBE END FINISH	ARM TUBE END TOLERANCE	ARM TUBE END FINISH	ARM TUBE END TOLERANCE	ARM TUBE END FINISH	ARM TUBE END TOLERANCE		
1	W/A	1	FT	18"	18"	1/4"	40	11.4	18'	18"	±.015"	18"	±.015"	18"	±.015"	18"	±.015"	18"	±.015"	18"	±.015"
2	W/A	1	FT	15 1/2"	15 1/2"	1/4"	40	9.5	15'	15 1/2"	±.015"	15 1/2"	±.015"	15 1/2"	±.015"	15 1/2"	±.015"	15 1/2"	±.015"	15 1/2"	±.015"
3	W/A	1	FT	12 1/4"	12 1/4"	1/4"	40	7.2	12'	12 1/4"	±.015"	12 1/4"	±.015"	12 1/4"	±.015"	12 1/4"	±.015"	12 1/4"	±.015"	12 1/4"	±.015"
4	W/A	1	FT	10 3/4"	10 3/4"	1/4"	40	5.8	10'	10 3/4"	±.015"	10 3/4"	±.015"	10 3/4"	±.015"	10 3/4"	±.015"	10 3/4"	±.015"	10 3/4"	±.015"
5	W/A	1	FT	8 1/2"	8 1/2"	1/4"	40	4.4	8'	8 1/2"	±.015"	8 1/2"	±.015"	8 1/2"	±.015"	8 1/2"	±.015"	8 1/2"	±.015"	8 1/2"	±.015"
6	W/A	1	FT	6 1/2"	6 1/2"	1/4"	40	3.0	6'	6 1/2"	±.015"	6 1/2"	±.015"	6 1/2"	±.015"	6 1/2"	±.015"	6 1/2"	±.015"	6 1/2"	±.015"
7	W/A	1	FT	4 1/2"	4 1/2"	1/4"	40	1.6	4'	4 1/2"	±.015"	4 1/2"	±.015"	4 1/2"	±.015"	4 1/2"	±.015"	4 1/2"	±.015"	4 1/2"	±.015"
8	W/A	1	FT	2 1/2"	2 1/2"	1/4"	40	0.8	2'	2 1/2"	±.015"	2 1/2"	±.015"	2 1/2"	±.015"	2 1/2"	±.015"	2 1/2"	±.015"	2 1/2"	±.015"
9	W/A	1	FT	1 1/2"	1 1/2"	1/4"	40	0.4	1'	1 1/2"	±.015"	1 1/2"	±.015"	1 1/2"	±.015"	1 1/2"	±.015"	1 1/2"	±.015"	1 1/2"	±.015"
10	W/A	1	FT	3/4"	3/4"	1/4"	40	0.2	0.5'	3/4"	±.015"	3/4"	±.015"	3/4"	±.015"	3/4"	±.015"	3/4"	±.015"	3/4"	±.015"

1. THIS IS A GENERAL DRAWING FOR INFORMATION PURPOSES ONLY. ALL DIMENSIONS SHALL BE AS SHOWN UNLESS OTHERWISE SPECIFIED.

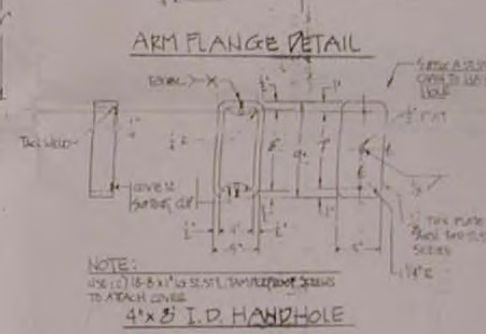
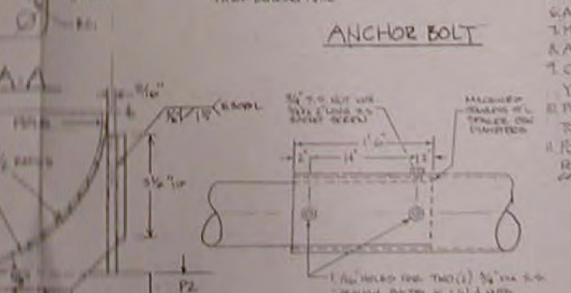
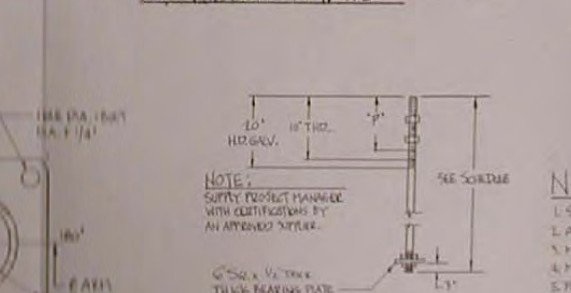
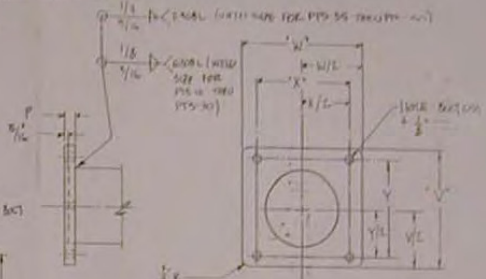
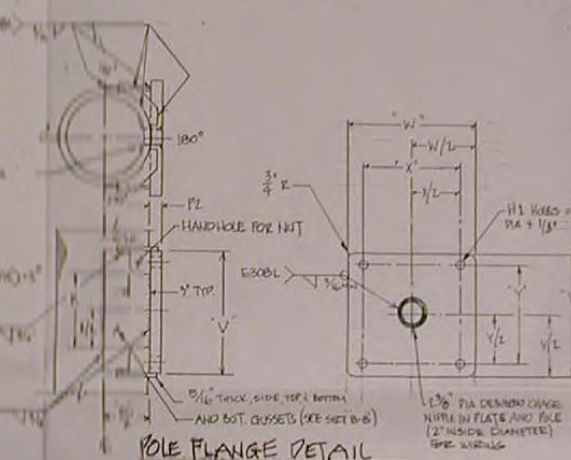
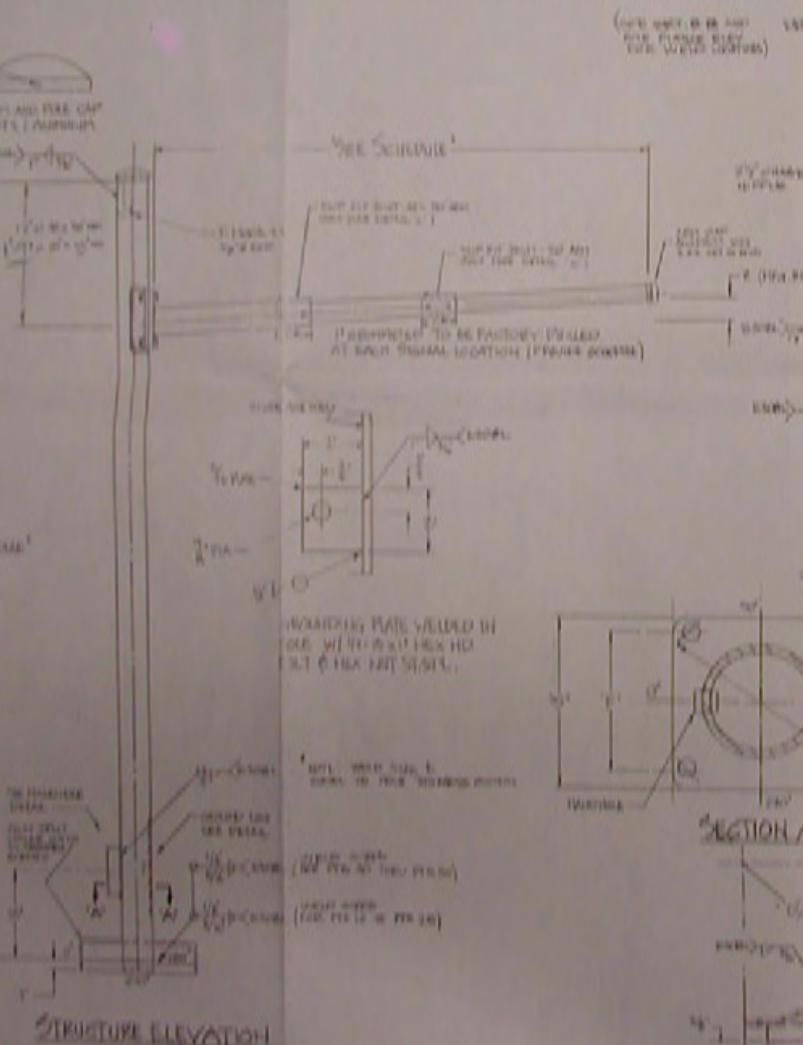
1. STAINLESS STEEL
2. 304 SS OR 316 SS

SPECIAL NOTE
THIS IS THE
DRAWING FOR THE
ARM AND TUBE CAP
PLATE (ALUMINUM)

SEE DRAWING

THE STAINLESS
STEEL
MATERIAL
SHALL BE
304 SS OR 316 SS

STRUCTURE ELEVATION



- NOTES:
1. SAFETY MATERIAL IS TO BE 304 STAINLESS STEEL PER ASTM A 312
 2. ARM TUBE MATERIAL IS TO BE 304 STAINLESS STEEL PER ASTM A 312
 3. FLANGE MATERIAL IS TO BE 304 STAINLESS STEEL WITH MIN. YIELD STRENGTH OF 30,000 PSI
 4. MOC. WELDABLE IS TO BE DON. SERIES
 5. TUBE CAP AND ARM END CAPS TO BE ALUMINUM
 6. ANCHOR BOLTS WITH NUTS AND WASHERS TO BE 1/2" HD GALV. TO A193
 7. MARK ALL DIMENSIONS TO CENTER UNLESS OTHERWISE SPECIFIED
 8. ANCHOR NUTS WITH BOLTS OR EITHER END TO BE 1/2" HD GALV. TO A193
 9. CONNECTION BOLTS AND WASHERS TO BE 1/2" HD GALV. TO A193 WITH MIN. YIELD STRENGTH OF 30,000 PSI
 10. YIELD STRENGTH OF 30,000 PSI
 11. POLE PLATES AND ARMS SHALL BE REINFORCED TO WITHSTAND 75 POUNDS A SQUARE TO BE PROVIDED FOR APPROVAL FROM THE PRODUCTION FOLLOWING.
 12. POLE AND ARM MATERIAL TO BE THE SAME THROUGHOUT THE ENTIRE LENGTH UNLESS OTHERWISE SPECIFIED.
 13. ALL DIMENSIONS SHALL BE TO CENTER UNLESS OTHERWISE SPECIFIED.