

StrongPoint™

Secure the Field

The reliable field security appliance to secure your traffic management communications network - the *StrongPoint* appliance is the password!

Description

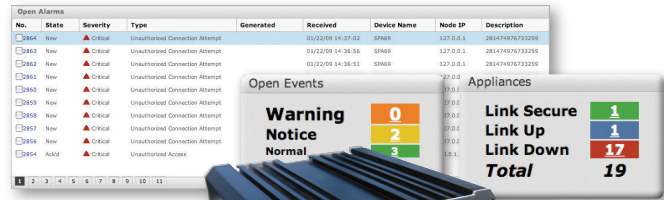
The *StrongPoint* security appliance creates a secure, virtual-network layer connection between the traffic management system and the communications network. *StrongPoint* uses patented “device recognition” technology from Uniloc® to establish a Secure Private Network between an authorized traffic management system and individual field appliances.

The trend in the transportation industry today is to move to a more cost-effective mode of communications, which provides an efficient means of interconnecting signalized intersections. As the use of Advanced Traffic Management Systems rises, a cost-effective and secure way to communicate with remote systems will become a mandatory requirement. Internet, Ethernet, and wireless technologies are some of the technologies that meet this requirement.

With the use of the Internet and Ethernet as common platforms of choice in many new transportation management system applications, it is anticipated that the opportunities to breach these types of networks will rise accordingly. The *StrongPoint* security appliance provides a simple, but highly effective solution for managing network security.

Benefits

- Cost-effective security for controllers, detectors, surveillance cameras, UPS systems, or other devices supporting an IP or web based user interface.
- Maximum reliability, hardened for use in the traffic cabinet, including secure network access from the traffic cabinet.
- Easy “plug-and-play” field installation; no field PC required, no device configuration required in the field, and no passwords or keys to manage.



Features

- Includes Uniloc-patented “device recognition” technology
- Complete server-based device management toolset for easy set-up and authorized appliance configuration
- Network intrusion detection, location, and notification at the Traffic Management Center (TMC)
- Secure network access from the cabinet, the only network security system to offer bi-directional security – TMC-to-Cabinet and Cabinet-to-TMC
- Uncompromising security on any infrastructure - including wireless and public Internet
- Cross-platform compatibility with any operating system and field control hardware
- Connects to existing cabinet network routers, switches, or firewall security devices
- Self-test on power-up
- LED indicators for power and communications link/activities status
- Shelf mountable for easy in-cabinet placement with optional DIN rail or sidewall mounting
- Allocate, permission, manage, and control *StrongPoint* field security appliances and PC clients from a single remote location
- Gain real-time insight into the status of all the *StrongPoint* appliances and PC clients participating in your *StrongPoint* secure network
- Track and report on all *StrongPoint* appliances, PC clients and users of the *StrongPoint* system
- Define and receive instant status alerts and updates regarding any changes to your *StrongPoint* secured network
- Receive alerts regarding any unauthorized access attempts based on device/location

Applications

- Allows agencies to adopt low cost/quick deployment infrastructures such as wireless or public Internet without compromising security
- Shields traffic management systems against Denial-of-Service (DOS) attacks and Address Resolution Protocol (ARP) redirecting or spoofing originating from malicious code threats
- Device-based access control restricts field-control network access to ONLY authorized PCs
- Eliminates transportation network vulnerabilities due to unknown security compliance by private network sharers
- Monitor and manage field security configuration and network communications status from the TMC

Processor

- Motorola® MPC8321EEC Microprocessor
- 333MHz core processor speed
- 32Mb Flash Memory
- 64Mb DDR2 Memory
- up to 18 Mbps StrongPoint/VPN Throughput

Power

- 24 VDC, optional 100-240 VAC
- Consumption, current
- 8 Watts/0.3A

Communication Ports

- 1 WAN, 4 LAN,
- RJ45, 10/100 Mbit/s Ethernet

Environmental

- -29 F to +165 F (-34 C to +74 C)
- 0 to 95% relative humidity
- RoHS compliant components
- Aluminum extrusion chassis

Dimensions and Weight

- 6.25 in W x 3 in H x 8 in L
- 2.5 lbs (1.13 Kg)

Warranty

- Two-year warranty on hardware
- Extended warranty package to five years
- One-year software upgrade available

Regulatory

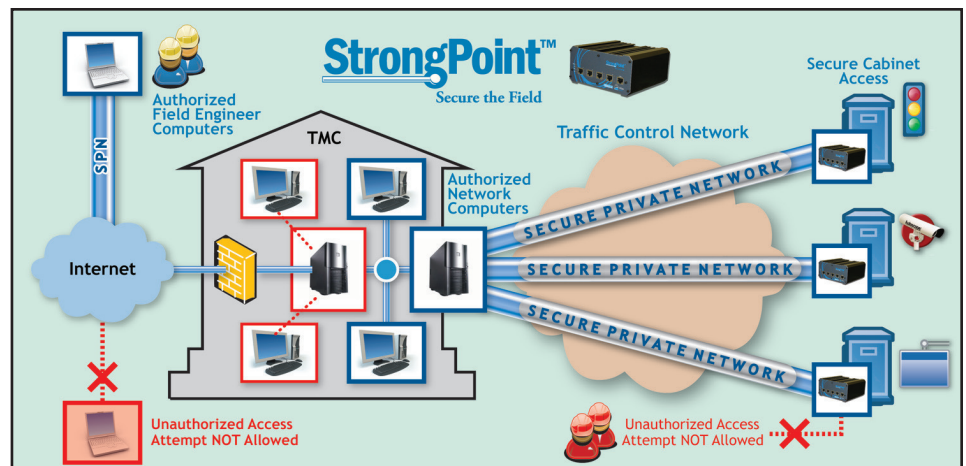
- NEMA TS2-2003 Certification
- FCC Part 15 and ICES-003 (Issue 2) Certified

“Plug-and-Play” Operations

Uniloc “device recognition” authorizes the *StrongPoint* field appliances for exclusive use in a traffic control network, and ensures that other unauthorized devices are not allowed to communicate on the *StrongPoint* Secure Private Network. A *StrongPoint* server is located at the TMC. The *StrongPoint* server authenticates the *StrongPoint* hardware and locations of the network’s *StrongPoint* appliances. Each cabinet contains a *StrongPoint* appliance, which is connected to traffic control devices requiring a network connection. As each appliance is connected, it “phones home” to the *StrongPoint* server and establishes its own device-locked point-to-point Secure Private Network. Throughout its life in the field, the *StrongPoint* appliance continuously verifies its operational status.

The *StrongPoint* security appliance offers:

- Protection for field traffic control systems from the effects of external cyber-threats
- Unprecedented hack-resistance - significantly improving upon traditional router, switch, and firewall security
- Traffic Management Systems with secure private tunneling across public network segments, including wireless (CDMA, GSM, 802.11a/b/g) and the public Internet (802.3, DSL, Cable)
- A point-to-multi-point and bi-directional Secure Private Network between the TMC and each field traffic cabinet
- “Device recognition” to restrict field control access to designated terminals at the TMC, or between Centers (Center-to-Center Communications)



© 2009 Econolite Control Products, Inc. All rights reserved. Econolite Control Products, Inc. reserves the right to change or update these specifications at any time without prior notification

3360 E. La Palma, Anaheim, CA 92806-2856
Tel: (714) 630-3700 • Fax: (714) 630-6349
E-mail: sales@econolite.com
www.econolite.com
38507E0108-2
ECONOLITE

ECONOLITE
Solutions that Move the World®

ISO
9001
REGISTERED