



## Benefits

- Customer-owned solution
- Delivering a customer-oriented transportation data management solution
- Flexible Internet accessibility
- Time-saving data summaries and reporting
- Personalized and secure web site
- Historical data comparisons for result measurement
- Easy setup and hassle-free monitoring
- Promoting partnerships between public agencies and private companies

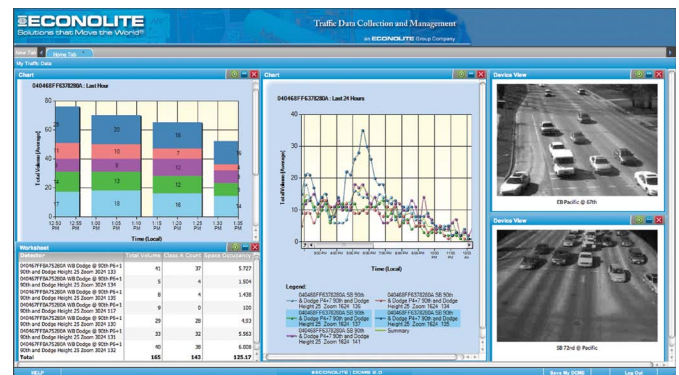
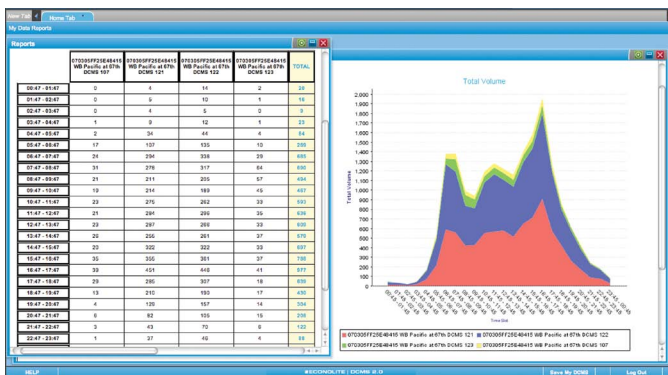
## Applications

- Freeways
- Intersections
- Midblock
- Tunnels
- Bridges
- Parking structures and parking lots
- Tollways
- Shopping centers
- Temporary, construction, and work zone safety
- Intelligent, remote surveillance

## Setup & Operation

DCMS.2 is a reliable data collection and management solution made possible via numerous communications media. Ethernet on fiber, copper, CDMA, and wireless Ethernet are a few of the most common solutions. For example, traffic data that resides within the Autoscope Solo Terra video detection device will be extracted for real-time data polling at user-defined time intervals.

DCMS.2 traffic data is aggregated for archiving, analysis, and formatting. DCMS.2 servers may be Econolite-managed or customer-owned and operated. The data is made available to designated agency personnel and authorized users via a secure code-protected web browser. In addition, DCMS.2 will provide a web interface incorporating the latest in user-definable dashboard Widget mapping, reporting, and streaming video. Selectable tabs provide the user with the ability to create custom viewing of priority Widgets as well as communications alert notifications. Real-time polling and stored traffic data includes: volume, occupancy, speed, density, headway, and up to five (5) vehicle classifications in 5-minute time intervals.



## Detection Systems Supported

- Autoscope Product Suite (Solo Terra, Solo Pro, 2020™, & RackVision™, and RackVision Terra)

## Data Service

- Internet Protocol (IP) account setup
- Detector file creation
- Password-protected website
- User personalized website design, hosting, and data archiving
- Scheduled data distribution through user-controlled, Internet-based Graphical User Interface (GUI)

- Traffic data analysis in Microsoft® Excel, Word, and Adobe PDF format

## Service Support Options

- Annual support & maintenance subscription
- Mapping updates
- Software updates
- System enhancements

## Communications

- Ethernet communications
- Wireless cellular modem, Code Division Multiple Access (CDMA), or General Packet Radio Service (GPRS)
- TCP/IP protocol

© 2011 Econolite Control Products, Inc. All rights reserved. Econolite Control Products, Inc. reserves the right to change or update these specifications at any time without prior notification

3360 E. La Palma, Anaheim, CA 92806-2856  
 Tel: (714) 630-3700 • Fax: (714) 630-6349  
 E-mail: sales@econolite.com  
 383060E108-6



**ECONOLITE**<sup>®</sup>  
 An Econolite Group Company