

Radar Sensors for Traffic Detection

AccuScan 600C or 1000C

What, exactly, is the AccuScan C Series?

The Econolite AccuScan 600C and 1000C Series of radar sensors use the latest forward-fire radar design and technology to achieve superior traffic detection accuracy and reliability. The AccuScan 600C and 1000C are ideally suited for intersections requiring stop bar and advance detection for up to 8 lanes of approaching and departing traffic.

Why do agencies use AccuScan?

AccuScan 600C and 1000C sensors provide stop bar and advance detection, as well as lane-by-lane detection in one sensor, saving agencies money and time. AccuScan 600C provides up to 8 lanes of stop bar detection for large intersections, while the 1000C provides up to 1,000 feet of advance detection for high-speed approaches.

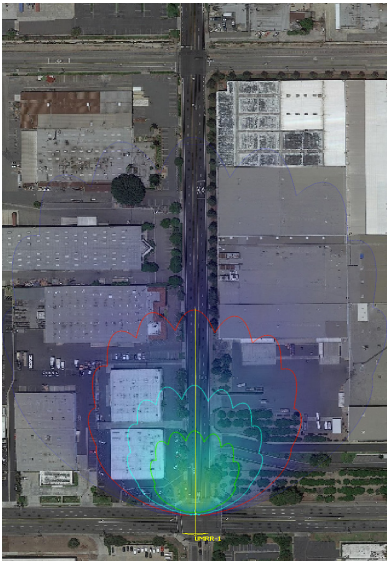
How does AccuScan benefit the driving public?

Econolite's AccuScan line of detection sensors are ideally suited for high-speed approaches. This helps to reduce travel times and traffic congestion, while increasing safety at intersections for pedestrians, cyclists, and motorists.





Accuscan 600C



Accuscan 1000C



General Data

Specification	600C	1000C
Max Range – Automobile	515 ft.	755 ft.
Max Range – Truck	915 ft.	1100 ft.
Range Accuracy	Typ. < $\pm 2.5\%$ or < $\pm 0.8\text{ft}$ (whichever is larger)	
Speed Accuracy	Typ. < $\pm 0.6\text{miles/hr}$ or $\pm 1\%$ (whichever is larger)	
Minimum absolute radial speed	4 in/sec (1 m/s)	
Simultaneously tracked objects	Up to 256	
Horizontal field of view angle	$\pm 50^\circ$	$\pm 18^\circ$
Lane coverage	Up to 8 lanes	Up to 6 lanes
Max angle to traffic flow	25°	15°
Ambient Temperature	-40° to $+165^\circ\text{F}$ (-40° to $+74^\circ\text{C}$)	
Environmental Protection	IP67	
Weight (approximate)	2.84 lbs (1.29 kg)	
Dimensions (L x H x W)	8.4x6.1x1.6 in (213x155x40mm)	
Power Supply	13-32 VDC 12 W @ 20°C	
Frequency Band	24-24.15 GHz (K band)	
Output Power	12.7dBm or 20dBm	
Interface	RS485 full-duplex 100BaseT Ethernet	
Compliance	ETSI EN 300-440, FCC part 15, RSS-310, RSS-210, SRRC, KCC, NCC	
Warranty	2 Years	

- Using 20dBm power output enclosure detection range. Used in specific installation ranges.

