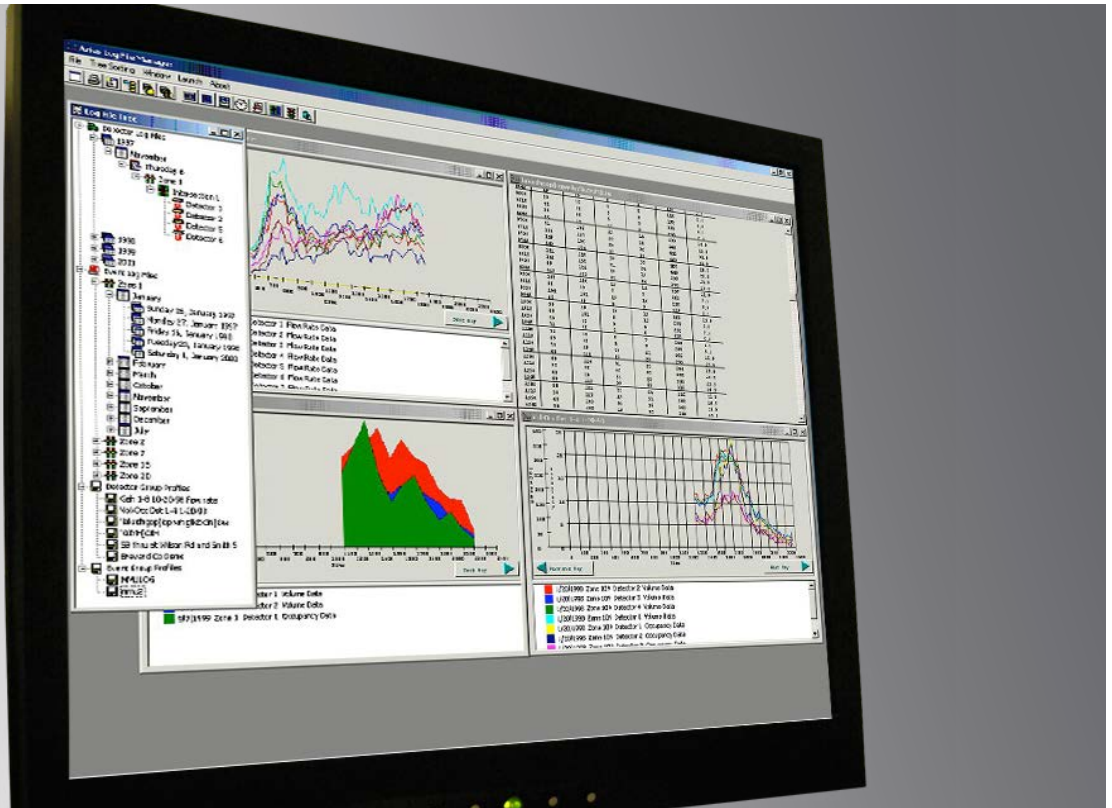


ARIES®



Aries is a Windows®-based traffic management system capable of controlling and monitoring system components.

About Aries

Aries can be used as a maintenance tool for a technician to interrogate an intersection controller remotely in order to perform observational troubleshooting by displaying real-time intersection graphics and controller programming. Aries can also retrieve the event logs from the master and controller. Aries' ability to facilitate failure paging will induce the transfer of critical failure messages to a pager, this will diminish response time for required situations.

At A Glance

- Distributed closed-loop traffic management system
- PC-based client/server architecture
- Easy-to-use Graphical User Interface (GUI)
- Multi-tasking communications server allows multiple, simultaneous connections to On-Street Masters (OSM)
- Supports both NEMA and 2070 controllers
- Aries operates on most Microsoft Windows platforms up through Windows 7

Traffic Control

Aries, along with the ASC/2M master, meets numerous traffic control needs. The master provides Traffic Responsive (TR) operation for automatic plan selection from measurement of scaled volume, scaled occupancy, or the greater value of each. The ASC/2M also supplies Time-of-Day (TOD) operation for predictable plan changes and TR override in the instance that the cycle length selected by TR operation is greater than the one selected by TOD. The master allows for crossing arterial coordination when two major streets intersect and can be overridden by manual plan selection by keyboard or central command whenever special conditions occur.

Database Management

The database management features in Aries include the ability to upload, download, and compare field programming values to data stored on Aries, along with the capacity to gather logged data from field equipment. Because the display of data is so important to the operator, volume and occupancy data can be presented in a graphic method that provides a visual comparison between flows during the day, in addition to comparisons between detectors. Data is also presented in a traditional tabular format.

Graphical User Interface

Aries' menu tree allows point-and-click selection of zones, intersections, and functions. Multiple windows can be opened simultaneously to provide visual display of real-time data and programmed data, side-by-side. A toolbar contains all of the commonly used functions of the system for quick selection.

Client-Server Operation

Aries can be installed so that multiple users are able to share the same database. The data shared includes controller and master programming information to ensure that everyone has the same logged data for the sharing of detector and failure data. Furthermore, a computer can be designated as the communications server so each user can connect to field devices by using the communications server modems and telephone line connections. Aries operates on most Microsoft Windows platforms up through Windows 7 and can also be integrated with Econolite's Autoscope[®] Machine Vision Processor (MVP) Software Suite. After the Autoscope software is added under the intersection nodes, the user can right click to view a menu. From this menu, the video player, front panel status, or operational log functions can be launched. This function allows users to run both programs at the same time.

Software Features

- Aries Zone Manager
- Aries Communications Server
- Aries Zone-Intersection Displays
- Operations Scheduler
- Aries Data Entry
- Aries Log File Manager
- Aries Split Monitor
- Aries Green Band Display
- Zone Master Speed Trap Viewer
- Autoscope Browser (optional purchase)

