

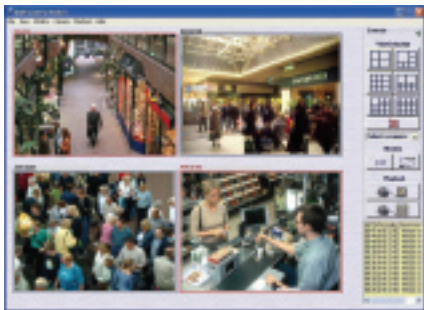
AXIS 241 Video Servers

*Full-featured digital benefits
for analog surveillance systems*

AXIS 241 Video Servers from the market leader in network video, are designed to migrate your analog investments into high-performance IP solutions, ideal for surveillance and remote monitoring.

The AXIS 241 Video Servers accommodate one or four analog video streams depending on the model. System integration and network utilization are optimized with sophisticated functions such as built-in motion detection, SNMP and simultaneous Motion JPEG and MPEG-4 streams. Powerful event management tools include image upload, alarm notification and I/O control. Pan/tilt/zoom control is done over the serial port, enabling PTZ and dome camera handling over the network.

A complete set of security features, including multiple user access levels, HTTPS encryption and IP address filtering, ensure secure video handling and configuration.



- High quality, de-interlaced video at 30/25 frames per second per channel
- Simultaneous Motion JPEG and MPEG-4 streams in resolutions up to 768x576
- Video motion detection and pre/post-alarm buffer
- Support for PTZ and dome cameras
- HTTPS encryption for network security



Specifications

Models	AXIS 241Q*: Four video channels AXIS 241S*: One video channel <i>*Also available as Blade versions for Axis Video Rack Solution</i>	Operating conditions	5-50 °C (41-122 °F) Humidity 20-80% RH (non-condensing)
Video compression	Motion JPEG MPEG-4 Part 2 (ISO/IEC 14496-2), Profiles: ASP and SP	Installation, management and maintenance	AXIS Camera Management tool on CD and web-based configuration Configuration of backup and restore Firmware upgrades over HTTP or FTP, firmware available at www.axis.com
Resolutions	4CIF, 2CIFExp, 2CIF, CIF, QCIF max 704x480 (NTSC) 704x576 (PAL) min 160x120 (NTSC) 176x144 (PAL)	Video access from Web browser	Camera live view for up to 20 clients, Video recording to file (ASF), Sequence tour for up to 20 PTZ presets or external Axis video sources Customizable HTML pages
Frame rate (NTSC/PAL)	Motion JPEG: Up to 30/25 fps at 4CIF (1 channel) 30/25 fps at 2CIF (4 channel) MPEG-4: Up to 30/25 fps at 2CIF (1 channel) 21/17 fps at 4CIF (1 channel) 20/17 fps at 2CIF (4 channel)	Minimum Web browsing requirements	Pentium III CPU 500 MHz or higher, or equivalent AMD, 128 MB RAM, AGP graphics card 32 MB RAM, Direct Draw Windows XP, 2000, DirectX 9.0 or later Internet Explorer 6.x or later For other operating systems and browsers see www.axis.com/techsup
Video streaming	Simultaneous Motion JPEG and MPEG-4 Controllable frame rate and bandwidth Constant and variable bit rate (MPEG-4)	System integration support	Open API for application integration, including AXIS VAPIX API*, AXIS Media Control SDK*, event trigger data in video stream, embedded scripting Quality of Service (QoS) Layer 3, DiffServ Model Watchdog ensures continuous operation, event notifications can be monitored by other systems Embedded Linux operating system <i>* Available at www.axis.com</i>
Image settings	Compression levels: 11 (Motion JPEG) /23 (MPEG-4) Rotation: 90°, 180°, 270° Aspect ratio correction Color: color, black & white Overlay capabilities: time, date, text, image or privacy mask De-interlace filter	Supported protocols	IPv4/v6, HTTP, HTTPS, SSL/TLS*, TCP, QoS, SNMPv1/v2c/v3 (MIB-II), RTSP, RTP, UDP, IGMP, RTCP, SMTP, FTP, ICMP DHCP, UPnP, Bonjour, ARP, DNS, DynDNS, SOCKS, IEEE802.1X. More information on protocol usage available at www.axis.com <i>*This product includes software developed by the Open SSL Project for use in the Open SSL Toolkit.</i>
Security	Multiple user access levels with password protection, IP address filtering, HTTPS encryption, IEEE 802.1X authentication.	Applications (not included)	AXIS Camera Station - Surveillance application for viewing, recording and archiving up to 25 cameras See www.axis.com/partner/adp_partners.htm for further software applications via partners
Alarm and event management	Events triggered by video motion detection, external inputs, audio detection, PTZ presets, product restart, video loss, or according to a schedule, Image upload over FTP, email, HTTP Notification over TCP, email, HTTP, external outputs Pre- and post alarm buffer of 9 MB per channel (approx. 4 min of CIF resolution video at 4 frames per second)	Included Accessories	Power supply 9 V DC, mounting brackets, connector kit, Installation Guide, CD with installation tool, software and User's Manual. MPEG-4 decoder (Windows), MPEG-4 licences (1 encoder, 1 decoder)
Pan/Tilt/Zoom	Wide range of analog PTZ cameras supported* 20 presets/camera, Guard tour, PTZ control queue Supports Windows compatible joysticks <i>*Drivers available for download at www.axis.com</i>	Accessories (not included)	AXIS 295 Video Surveillance Joystick MPEG-4 Decoder multi-user license pack Cable adapter Y/C to BNC (AXIS 241S)
Connectors	Analog composite video, NTSC/PAL autosensing inputs: AXIS 241Q: 4 BNC inputs AXIS 241S: 1 BNC input and 1 BNC output: loophrough or Y/C video input Ethernet 10BaseT/100BaseTX, RJ-45 Terminal block: 4 alarm inputs, 4 alarm outputs, RS-485/422 half duplex port, alternative power connection D-Sub for RS-232 port	Approvals	EN 55022 Class B, EN 61000-3-2, EN 61000-3-3, EN 55024, FCC Part 15 Subpart B Class B, ICES-003 Class B, VCCI Class B, C-tick AS/NZS CISPR 22 EN 60950 Power supply: EN 60950, UL, cUL
Casing	Metal casing. Standalone, stackable, or with brackets for wall or cage mount	Dimensions (HxWxD) and weight	42 x 140 x 155 mm (1.7" x 5.5" x 6.1") 540 g (1.2 lbs) excl. power supply
Processors and memory	CPU: ETRAX 100LX 32bit Video processing and compression: ARTPEC-2 RAM: 64MB (241Q), 32 MB (241S) Flash: 8 MB Battery backed up by real-time clock		
Power	7-20 V DC, max 8W		



AXIS 241S



AXIS 241Q



AXIS 241Q/S are also available as blade versions for AXIS Rack Solution. 12 blade slots allow for centralized video server management.

www.axis.com

AXIS
COMMUNICATIONS
Make your network smarter