

APX NEMA 3R QUAD DOOR ENCLOSURES

are designed to house electronic controls, terminals and instruments, and to provide protection from rain, sleet, snow, dripping water and corrosion, while providing ventilation.

STANDARD CONSTRUCTION:

(For details see specification sheets)

INDUSTRY STANDARD:

U.L. Type 3R, 4X

A. ENCLOSURE:

1. The complete enclosure is made from .125" thick aluminum alloy type 5052-H32 to provide a strong and rigid construction. Alternative material is 14 gauge type 304 stainless steel. (Specifier must choose the material to be used.)
2. Each enclosure is equipped with two adjustable "C" mounting channels on both side walls, providing versatile position of shelves, optional panels, or rack mounting angles.
3. Each door frame openings is double flanged on all four sides. The flanges increase the strength of the door opening and help prevent dust and liquids from dropping into the enclosure when the doors are opened.
4. Removable center posts are an integral part of three-point latching system and provides increased security and environmental protection.
5. All exterior seams are ground smooth or sealed weathertight with silicone sealant.
6. (3R only) Enclosures have provisions for mounting a forced-air fan system that can be thermostatically controlled, and air is exhausted through a slotted vent system in the roof overhang.

B. DOOR:

1. Each door utilizes an overlapping design and is equipped with a three-point latching mechanism with nylon rollers at the top and bottom.
2. Door handles are .75" stainless steel round bar and have provisions for a padlock.
3. (3R only) the standard main door lock is corbin #15484 or equal.
4. (3R only) Louvered air vents with filter retaining brackets and disposable paper filter elements are provided.
5. The main doors are sealed with closed-cell neoprene gasket.

APX NEMA 4X QUAD DOOR ENCLOSURES

are designed to house electronic controls, terminals and instruments, and to provide protection from vandals, rain, sleet, snow, dripping water and corrosion, as well as hosedown, splashing water, oil coolant seepage.



6. The continuous door hinges are .075" thick stainless steel with a .25" stainless steel hinge pin.

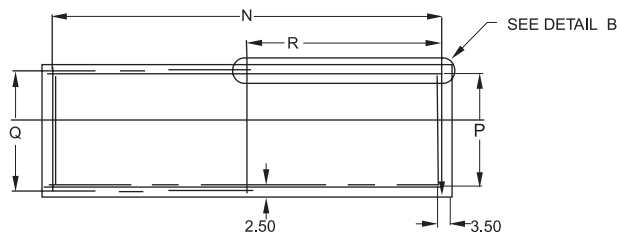
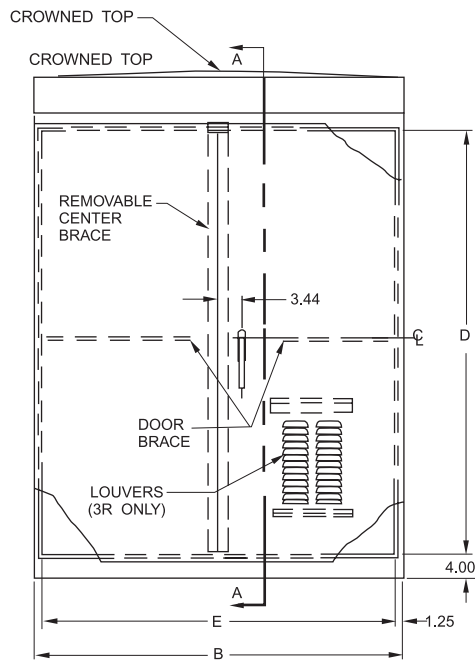
C. FINISH:

1. Natural aluminum enclosures are mill finish per federal specification QQA-250/8.
2. Painted enclosures are treated with an iron phosphate coating and dried by radiant heat.

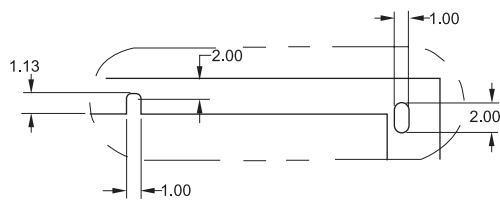
FOR NEMA TYPE 4X RATING:

DELETE all vents.

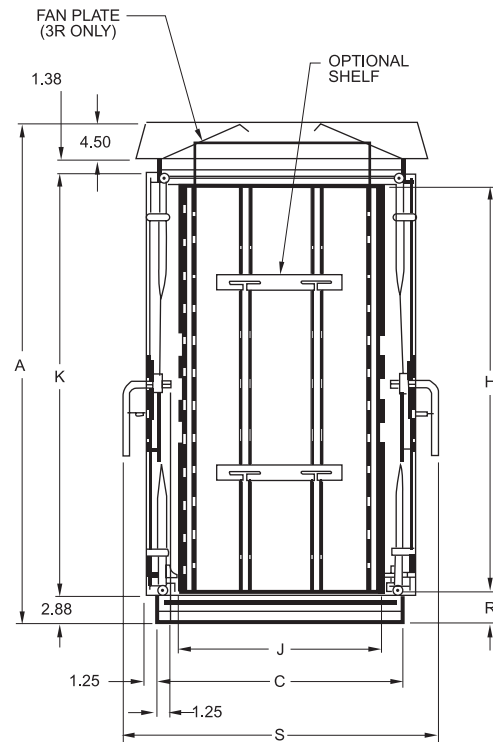
ADD all through holes are sealed.



PAD MOUNTING PATTERN



DETAIL B



SECTION A-A

OPTIONS:

- Lock, Keying, Other Than Standard
- Windows
- Switch Compartments
- Windows
- Rack Frame Assembly
- Shelves
- Painted Finishes
- Custom Equipment Mounting
- Climate Control
 - Air Conditioner
 - Sunshields
 - Insulation
 - Heater
 - Forced-air Ventilation Fan (3R only)

DIMENSIONS (inches)

| CATALOG NUMBER | SUGGESTED MOUNTING OPTIONS | | | CABINET | | | DOOR OPENING | | SWITCH COMPARTMENT LOCATION | | AVAILABLE SPACE | | DOOR HEIGHT | PANEL | | GENERAL INFORMATION | | | |
|----------------|----------------------------|------|-----|---------|-------|-------|--------------|-------|-----------------------------|---|-----------------|-------|-------------|-------|-------|---------------------|-------|-------|-------|
| | PED | POLE | PAD | A | B | C | D | E | F | G | H | J | K | L | M | N | P | Q | R |
| TCQD484836 | NO | NO | YES | 48.00 | 48.00 | 36.00 | 37.00 | 45.50 | OPTIONAL | | 38.38 | 33.00 | 40.00 | 39.00 | 45.00 | 44.50 | 31.00 | | |
| TCQD587430 | NO | NO | YES | 58.00 | 74.00 | 30.00 | 47.00 | 71.50 | OPTIONAL | | 48.38 | 27.00 | 50.00 | 49.00 | 71.00 | 70.50 | 25.00 | | |
| TCQD605036 | NO | NO | YES | 60.00 | 50.00 | 36.00 | 49.00 | 47.50 | OPTIONAL | | 50.38 | 33.00 | 52.00 | 51.00 | 35.25 | 46.50 | 31.00 | | |
| TCQD605636 | NO | NO | YES | 60.00 | 56.00 | 36.00 | 49.00 | 53.50 | OPTIONAL | | 50.38 | 33.00 | 52.00 | 51.00 | 41.25 | 52.50 | 31.00 | | |
| TCQD727224 | NO | NO | YES | 72.00 | 72.00 | 24.00 | 61.00 | 69.50 | OPTIONAL | | 62.38 | 21.00 | 64.00 | 63.00 | 69.00 | 68.50 | 19.00 | | |
| TCQD727236 | NO | NO | YES | 72.00 | 72.00 | 36.00 | 61.00 | 69.50 | OPTIONAL | | 62.38 | 33.00 | 64.00 | 63.00 | 69.25 | 68.50 | 31.00 | | |
| TCQD774826 | NO | NO | YES | 77.00 | 48.00 | 36.00 | 66.00 | 45.50 | OPTIONAL | | 67.38 | 23.00 | 69.00 | 68.00 | 45.00 | 44.50 | 18.50 | 22.00 | 22.25 |