

APPLICATION - NEMA 3R ONLY

APX Enclosures, Inc. 3R pedestal enclosures are designed to house electronic controls, terminals, and instruments, and to **provide protection from rain, sleet, snow, dripping water and corrosion.**

INDUSTRY STANDARD:

U.L. Type 3R

NEMA 3R SHOWN

STANDARD CONSTRUCTION;

(For details see specification sheet.)

A. ENCLOSURE:

1. Both the enclosure and door are made from .125" thick aluminum.
2. Top of enclosure is made of .250" thick type 5052- H32 aluminum and is continuously welded weathertight around the periphery of top.
3. Top of enclosure is prepunched with 2-1/2" diameter hole and four 5/8" diameter holes of 4" diameter bolt circle on 45° angle from center line.
4. A cover plate made of .125" thick aluminum with closed cell gasket secured with two 1/4-20 stainless steel carriage bolts and stainless steel nylock nuts is supplied.
5. Enclosure base is made of 1/2" thick type 5052-H32 aluminum plate with ample cutouts for electrical cable clearance. The base is designed for exterior anchor bolt (4) mounting, centers 11-1/2" wide x 13-1/2" deep .
6. A plywood panel, 3/4 thick x 12" x 34" is secured to back wall of cabinet with four stainless steel 5/16" - 18" x 1-1/2" threaded studs, flat washers and lock nuts.



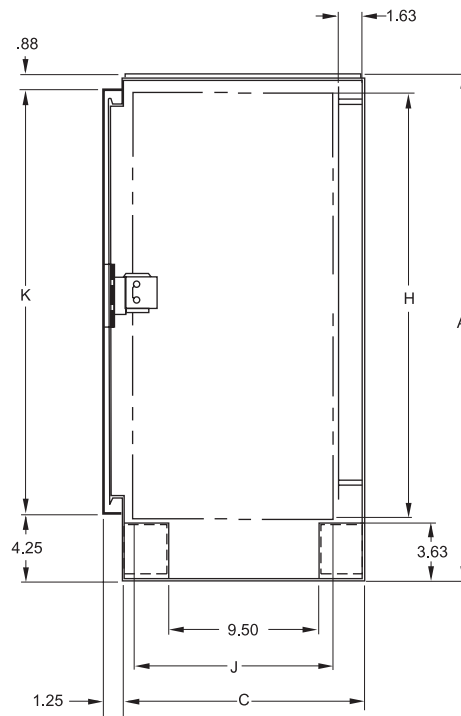
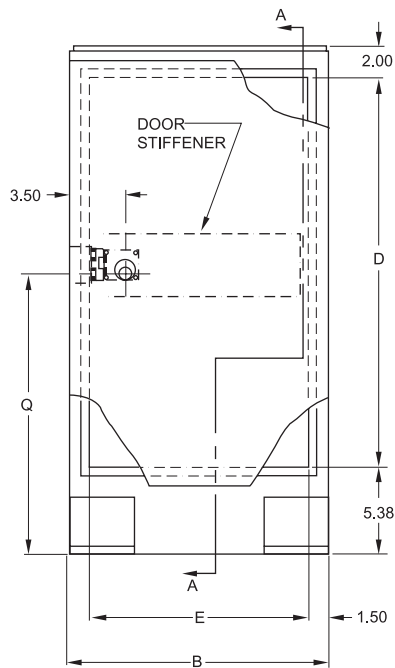
PEDESTAL

B. DOOR:

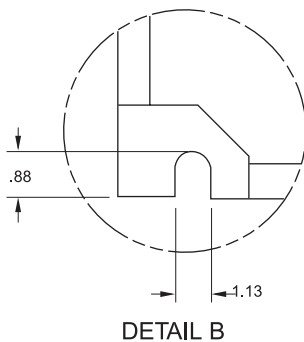
1. Main door is made from .125" thick type 5052-H32 aluminum.
2. Main door lock is Corbin #R357SGS series or equal and has a keyhole cover.
3. Each door is hinged to the enclosure with two heavy gauge stainless steel butt hinged with 1/4" diameter stainless steel pins. Hinges are secured to door and enclosure with 1/4-20 stainless steel carriage bolts and stainless steel nylock nuts.
4. Main door is sealed with closed-cell neoprene gasket.

C. FINISH:

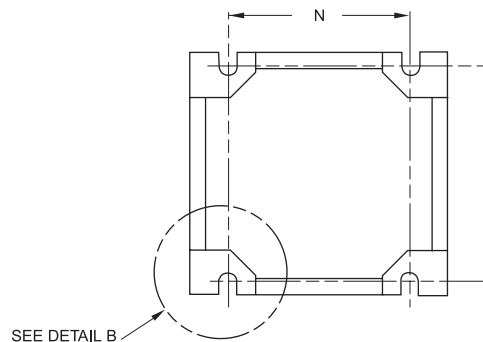
1. Natural aluminum enclosures are mill finish, per federal specification QQA-250/8. Painted enclosures are treated with a three (3) stage iron phosphate coating and dried by radiant heat. Standard finish coat is a Polyester Powder Coating. (See Standard Color Chart.)



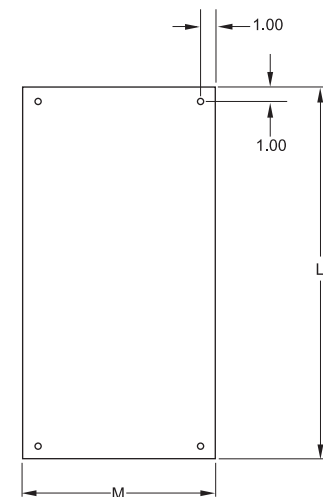
SECTION A-A



DETAIL B



MOUNTING PATTERN



PANEL

OPTIONS:

- Windows
- Painted Finishes
- Aluminum Panel
- "B" Size Switch Compartment

DIMENSIONS (inches)

CATALOG NUMBER	MOUNTING OPTIONS	OVERALL ENCLOSURE			DOOR OPENING		SWITCH COMPARTMENT LOCATION		AVAILABLE SPACE		DOOR HEIGHT	PANEL		PAD MTG. PATTERN		GENERAL INFORMATION
		A	B	C	D	E	F	G	H	J	K	L	M	N	P	Q
TCPE401615	PAD ONLY	39.88	16.25	15.19	32.50	13.25	OPTIONAL		34.50	12.00	34.75	35.00	13.50	11.50	13.50	21.63