

## APX NEMA 4X SPECLINE ENCLOSURES

are designed to house electronic controls, terminals and instruments, and to provide protection from rain, sleet, snow, dripping water and corrosion, as well as hosedown, splashing water and oil or coolant seepage.

## FEATURES:

Seams are continuously welded and ground smooth, oil tight quarter-turn latches hold door securely closed **latches are opened or closed** with a screw driver, oil resistant door gasket, three-point latch when height equals 36" or more, double flanged door opening for increased strength while excluding liquids and contaminants, door and body stiffeners provided in large enclosures, removable print pocket, panel screws are stainless steel and hasp for pad locking.

## INDUSTRY STANDARD:

U.L. Type 4X

## STANDARD CONSTRUCTION:

(For details see specification sheets)

### A. ENCLOSURE:

1. Aluminum enclosures less than 36 inches in height are made from .080 inch thick aluminum alloy type 5052-H32 to provide a strong, rigid construction. Aluminum enclosures equal to or greater than 36 inches in height are made from the same alloy type with a thickness of .125 inches.
2. The door frame opening is double flanged on all four sides. These flanges increase the strength of the door opening and help prevent dust and liquids from dropping into the enclosure when the door is opened.
3. All exterior seams are ground smooth or sealed weathertight with silicone sealant.
4. No holes or knockouts.
5. A padlock hasp is provided.
6. Aluminum enclosures have tapped mounting pads for mounting of optional equipment panels. Stainless steel enclosures use collar studs for this purpose.
7. Optional back panel is aluminum.

### B. DOOR:

1. The door is screwdriver operated, and oil-resistant quarter-turn latches hold door securely closed. Enclosures >35" in height are equipped with a three-point latching mechanism with nylon rollers at the top and bottom using a door handle that is fabricated from .75" stainless steel round bar and has provision for a padlock.
2. The door is sealed with closed-cell, oil-resistant neoprene gasket.
3. A removable 6x6" print pocket is provided on the inside of the door. Enclosures larger than 30" tall and 20" wide use a 10x10" removable print pocket.
4. Hinges shall be continuous. Enclosures equal to or larger than 36 inches tall shall have the hinges spot-

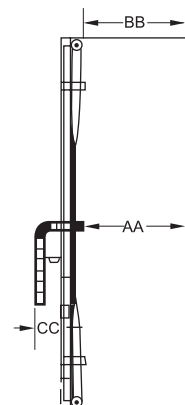
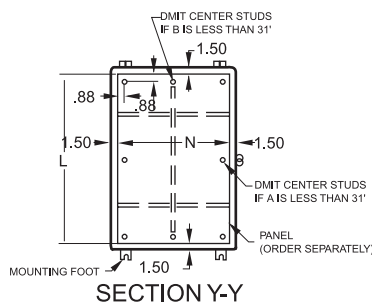
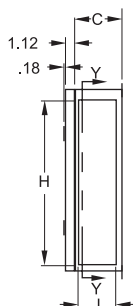
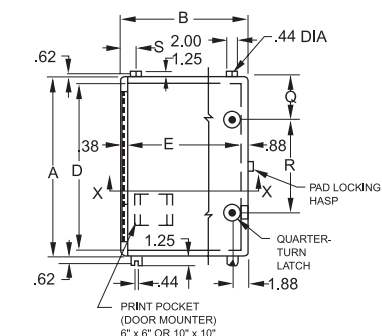


welded to both door and cabinet. Enclosures equal to or larger than 36 inches in height shall have hinges spot-welded to the cabinet and bolted to the door.

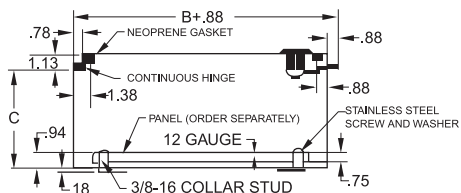
- A. Enclosures made from .080 aluminum will use hinges made from like material and use .187 inch hinge pins made from stainless steel.
- B. Enclosures less than 36 inches in height and made from .075 stainless steel use hinges made from like material and use .187 inch hinge pins made from stainless steel.
- C. Stainless steel enclosures equal to or greater than 36 inches in height use hinges made from .075 inch stainless steel with a .250 inch stainless steel hinge pin.
- D. Aluminum enclosures equal to or greater than 36 inches in height use hinges made from .090 inch thick aluminum with a .250 inch stainless steel hinge pin.

### C. FINISH

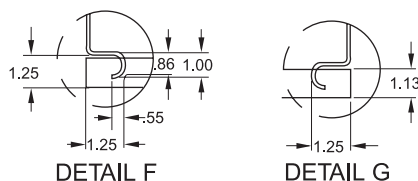
1. Natural aluminum enclosures are mill finish per federal specification QQA-250/8. Stainless steel enclosures are # 3 polish finish.
2. Painted enclosures are treated with an iron phosphate coating and dried by radiant heat.



### 3-POINT LATCH MODELS

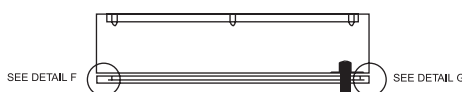


SECTION X-X



## DETAIL

DETAIL G



## TOP VIEW 3-POINT LATCH MODELS

**OPTIONS:**

- Windows
- Drip Shields
- Keyed Locks, Quarter-Turn
- Corbin Cabinet lock (3R only)
- Floor Stands
- Painted Finishes
- Screened louvered Vents
- Panel, Painted Steel

### DIMENSIONS (inches)

Catalog Number	Cabinet			Opening		Available Equipment Space		Door Height	Panel		General Information			3-Point Latch		
	A	B	C	D	E	H	J	K	L	M	Q	R	S	AA	BB	CC
TCSL161206	16.00	12.00	6.00	14.25	9.75	14.25	4.66	16.00	13.00	9.00	8.00		1.25			
TCSL161208	16.00	12.00	8.00	14.25	9.75	14.25	6.66	16.00	13.00	9.00	8.00		1.25			
TCSL161606	16.00	16.00	6.00	14.25	13.75	14.25	4.66	16.00	13.00	13.00	8.00		3.00			
TCSL161608	16.00	16.00	8.00	14.25	13.75	14.25	6.66	16.00	13.00	13.00	8.00		3.00			
TCSL201606	20.00	16.00	6.00	18.25	13.75	18.25	4.66	20.00	17.00	13.00	10.00		3.00			
TCSL201610	20.00	16.00	10.00	18.25	13.75	18.25	8.66	20.00	17.00	13.00	10.00		3.00			
TCSL202006	20.00	20.00	6.00	18.25	17.75	18.25	4.66	20.00	17.00	17.00	10.00		3.00			
TCSL242006	24.00	20.00	6.00	22.25	17.75	22.25	4.66	24.00	21.00	17.00	4.00	16.00	3.00			
TCSL242008	24.00	20.00	8.00	22.25	17.75	22.25	6.66	24.00	21.00	17.00	4.00	16.00	3.00			
TCSL242010	24.00	20.00	10.00	22.25	17.75	22.25	8.66	24.00	21.00	17.00	4.00	16.00	3.00			
TCSL242408	24.00	24.00	8.00	22.25	21.75	22.25	6.66	24.00	21.00	21.00	4.00	16.00	3.00			
TCSL243008	24.00	30.00	8.00	22.25	27.75	22.25	6.66	24.00	21.00	27.00	4.00	16.00	3.00			
TCSL302408	30.00	24.00	8.00	28.25	21.75	28.25	6.66	30.00	27.00	21.00	4.00	22.00	3.00			
TCSL302412	30.00	24.00	12.00	28.25	21.75	28.25	10.66	30.00	27.00	21.00	4.00	22.00	3.00			
TCSL303008	30.00	30.00	8.00	28.25	27.75	28.25	6.66	30.00	27.00	27.00	4.00	22.00	3.00			
TCSL362408	36.00	24.00	8.00	33.50	21.50	34.25	6.66	36.00	33.00	21.00			3.00	5.80	5.85	2.35
TCSL363008	36.00	30.00	8.00	33.50	27.50	34.25	6.66	36.00	33.00	27.00			3.00	5.80	5.85	2.35
TCSL363012	36.00	30.00	12.00	33.50	27.50	34.25	10.66	36.00	33.00	27.00			3.00	9.80	9.85	2.35
TCSL423608	42.00	36.00	8.00	39.50	33.50	40.25	6.66	42.00	39.00	33.00			3.00	5.80	5.85	2.35
TCSL483608	48.00	36.00	8.00	45.50	33.50	46.25	6.66	48.00	45.00	33.00			3.00	5.80	5.85	2.35
TCSL483612	48.00	36.00	12.00	45.50	33.50	46.25	10.66	48.00	45.00	33.00			3.00	9.80	9.85	2.35
TCSL603612	60.00	36.00	12.00	57.50	33.50	58.25	10.66	60.00	57.00	33.00			3.00	9.80	9.85	2.35