

APX NEMA 3R DOUBLE DOOR ENCLOSURES

are designed to house electronic controls, terminals and instruments, and to provide protection from rain, sleet, snow, dripping water and corrosion, while providing ventilation.

STANDARD CONSTRUCTION:

(For details see specification sheets)

INDUSTRY STANDARD:

U.L. Type 3R, 4X

A. ENCLOSURE:

1. The complete enclosure is made from .125" thick aluminum alloy type 5052-H32 to provide a strong and rigid construction. Alternative material is 14 gauge type 304 stainless steel. (Specifier must choose the material to be used.)
2. Each enclosure is equipped with two adjustable "C" mounting channels on both side walls and back wall, (enclosures wider than 60" are equipped with four adjustable "C" mounting channels) providing versatile positioning of shelves, or optional panels or rack mounting angles.
3. The door frame opening is double flanged on all four sides. These flanges increase the strength of the door opening and help prevent dust and liquids from dropping into the enclosure when the door is opened.
4. A removable center post is an integral part of the three point latching system and provides increased security and environmental protection.
5. All exterior seams are ground smooth or sealed weathertight with silicone sealant.
6. Pole or wall mounted enclosures have welded stiffener plates to reinforce the top and bottom of the rear wall. Removable bolt-on bottom plates are standard on pole mounted enclosures.
7. (3R only) Enclosures have provisions for mounting a forced air fan system that can be thermostatically controlled, and air is exhausted through a slotted vent system in the roof overhang.

B. DOOR:

1. Each door utilizes an overlapping design and is equipped with a three point latching mechanism with nylon rollers at the top and bottom.
2. Door handle is .75" stainless steel round bar and has provisions for a padlock.
3. (3R only) The standard main door lock is corbin #15484-1 or equal.

APX NEMA 4X DOUBLE DOOR ENCLOSURES

are designed to house electronic controls, terminals and instruments, and to provide protection from rain, sleet, snow, dripping water and corrosion, as well as hosedown, splashing water and oil or coolant seepage.



4. (3R only) A louvered air vent with filter retaining brackets and a disposable paper filter element is provided.
5. The main door is sealed with closed-cell neoprene gasket.
6. The continuous door hinges are .075" thick stainless steel with a .25" stainless steel hinge pin.

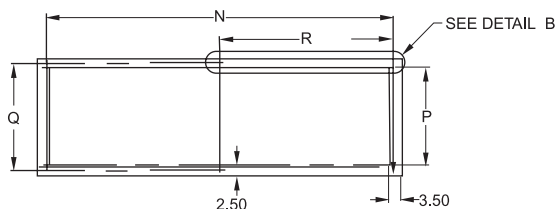
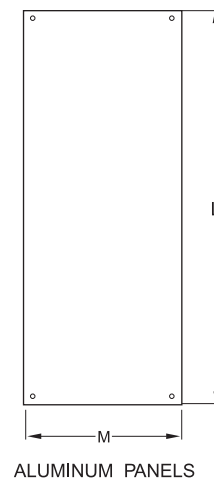
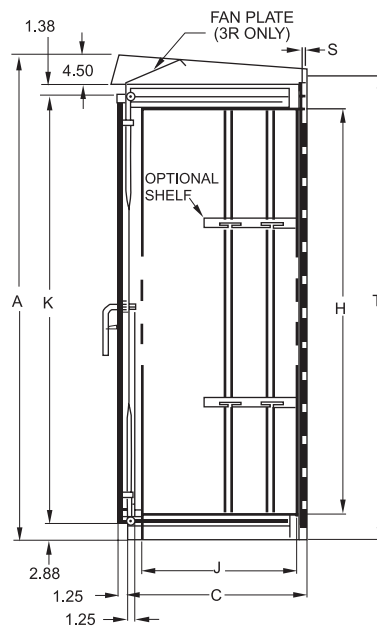
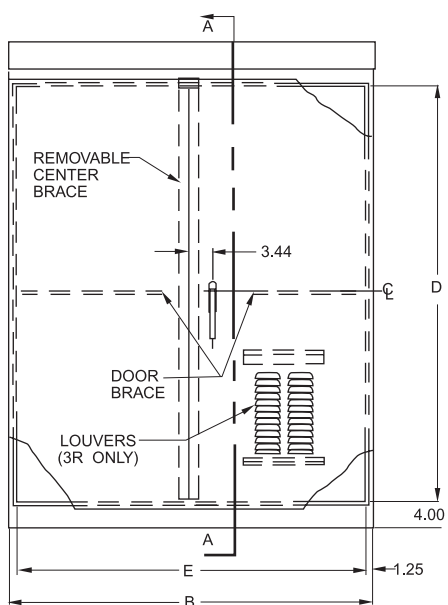
C. FINISH:

1. Natural aluminum enclosures are mill finish per federal specification QQA-250/8.
2. Painted enclosures are treated with an iron phosphate coating and dried by radiant heat.

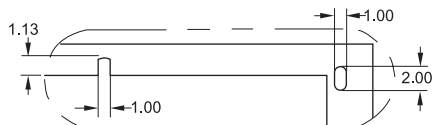
FOR NEMA TYPE 4X RATING

DELETE all vents.

ADD all through holes are sealed.



PAD MOUNTING PATTERN



DETAIL B

OPTIONS:

- Lock, Keying, Other Than Standard
- Windows
- Switch Compartments
- Shelves
- Panels
- Painted Finishes
- Custom Equipment Mounting
- Climate Control
 - Air Conditioner
 - Sunshields
 - Insulation
 - Heater
- Forced-Air Ventilation Fan (3R only)

DIMENSIONS (inches)

CATALOG NUMBER	SUGGESTED MOUNTING OPTIONS			CABINET			DOOR OPENING		SWITCH COMPARTMENT LOCATION		AVAILABLE SPACE		DOOR HEIGHT	PANEL		PAD MTG. PATTERN		GENERAL INFORMATION			
	PED	POLE	PAD	A	B	C	D	E	F	G	H	J	K	L	M	N	P	Q	R	S	T
TCDD363213	YES	YES	YES	36.00	32.00	13.00	25.00	29.50	OPTIONAL		25.75	10.50	27.25	25.75	29.00	27.00	8.00	N/A	N/A	.75	34.50
TCDD483615	NO	YES	YES	48.00	36.00	15.00	37.00	33.50	OPTIONAL		37.75	12.50	39.25	37.75	33.00	31.00	10.00	N/A	N/A	.75	46.50
TCDD604415	NO	NO	YES	60.00	44.00	15.00	49.00	41.50	OPTIONAL		49.75	12.50	51.25	49.75	41.00	39.00	10.00	N/A	N/A	.75	58.50
TCDD604830	NO	NO	YES	60.00	48.00	30.00	49.00	45.50	OPTIONAL		49.75	27.50	51.25	49.75	45.00	43.00	24.50	N/A	N/A	.75	58.50
TCDD666015	NO	NO	YES	66.00	60.00	15.00	55.00	57.50	OPTIONAL		55.75	12.50	57.25	55.75	57.00	55.00	10.00	30.50	30.50	.75	64.50
TCDD724818	NO	NO	YES	72.00	48.00	18.00	61.00	45.50	OPTIONAL		61.75	15.50	63.25	61.75	45.00	43.00	10.00	N/A	N/A	.75	70.50
TCDD724824	NO	NO	YES	72.00	48.00	24.00	61.00	45.50	OPTIONAL		61.75	21.50	63.25	61.75	45.00	43.00	18.50	N/A	N/A	.75	70.50
TCDD727215	NO	NO	YES	72.00	72.00	15.00	61.00	69.50	OPTIONAL		61.75	12.50	63.25	64.63	33.00	67.00	10.00	11.25	33.50	.75	70.50
TCDD727224	NO	NO	YES	72.00	72.00	24.00	61.00	69.50	OPTIONAL		61.75	21.50	63.25	64.63	33.00	67.00	18.50	20.25	33.50	.75	70.50
TCDD727236	NO	NO	YES	72.00	72.00	36.00	61.00	69.50	OPTIONAL		61.75	33.50	63.25	64.63	33.00	67.00	30.00	32.25	33.50	.75	70.50
TCDD907224	NO	NO	YES	91.00	72.00	24.00	80.00	69.50	OPTIONAL		80.75	21.50	82.25	80.75	33.00	67.00	18.50	20.25	42.50	.75	88.50