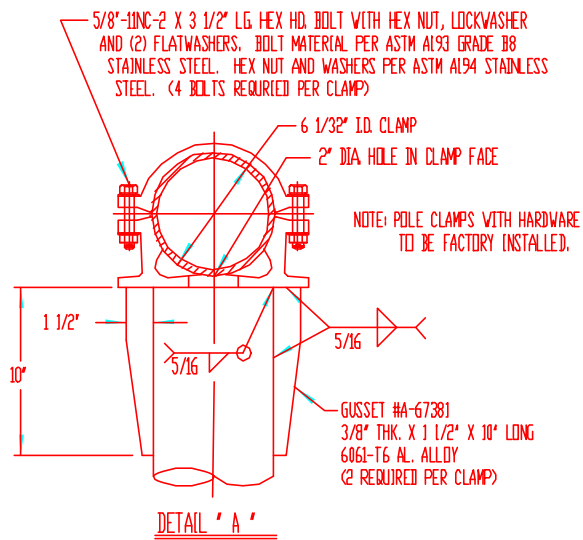
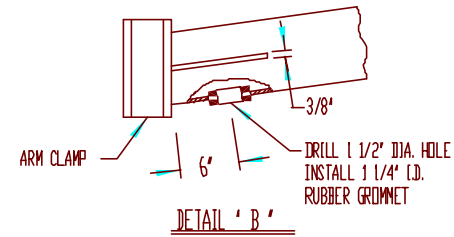
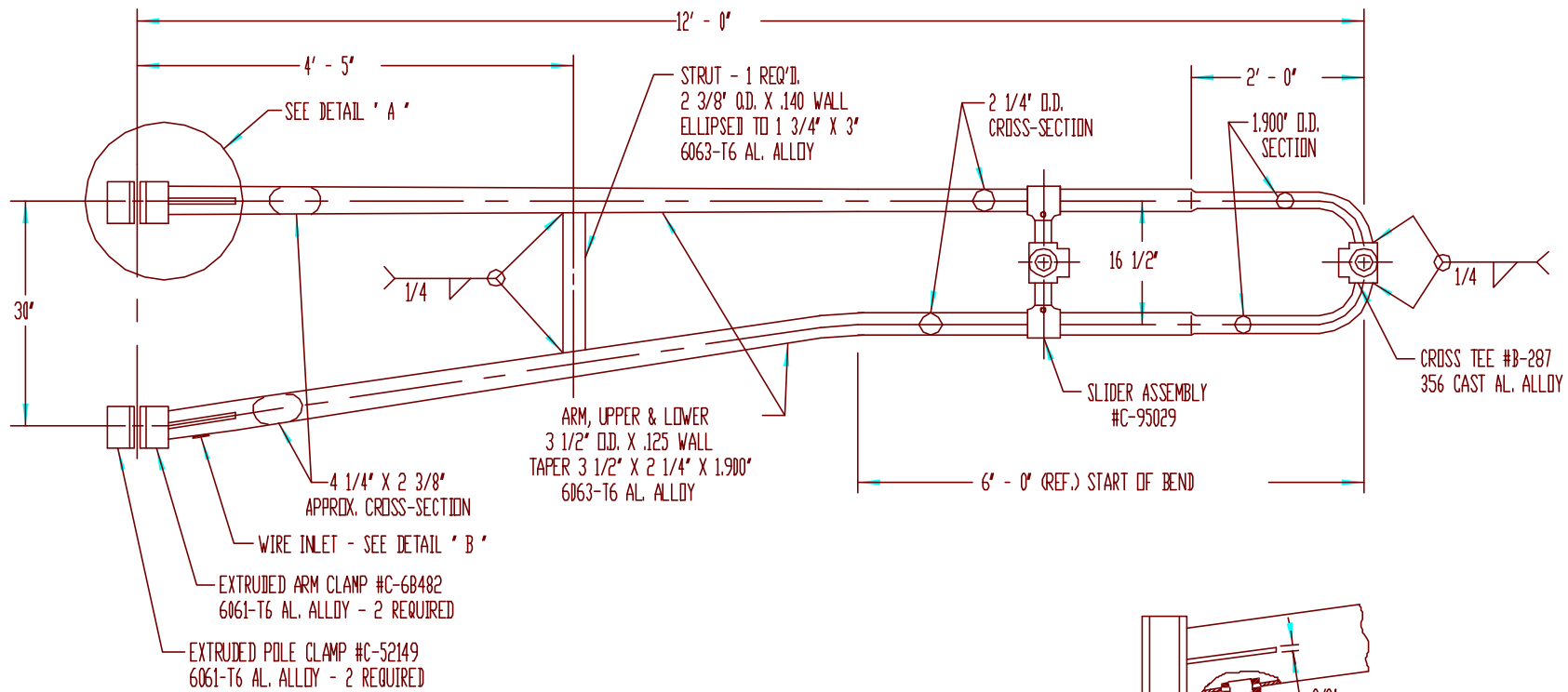


NOTE:
 1.- USE 4043 WELD WIRE.
 2.- 6063 ASSEMBLY .375 WALL OR LESS TO BE HEAT-TREATED TO T6 TEMPER AFTER WELDING.

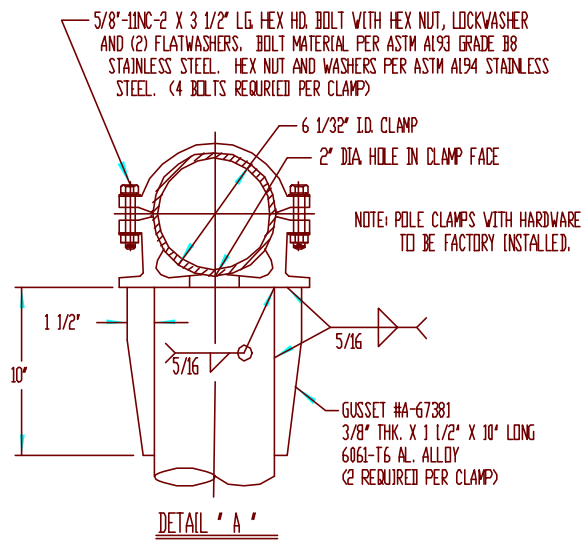


P&K

REV.					DATE		BY		CHK		P&K POLE PRODUCTS, INC. 84 Foundry St., Newark, N.J.	
DESCRIPTION					TITLE		10 FT. TROMBONE ARM ASSEMBLY TR1035560-10		DR 10-09-81		DWG NO. C-69377	
MATERIAL					DR 10-09-81		CH W.V.W.		APPR. 10-09-81		SCALE NONE	
NEW JERSEY DEPT. OF TRANSPORTATION												

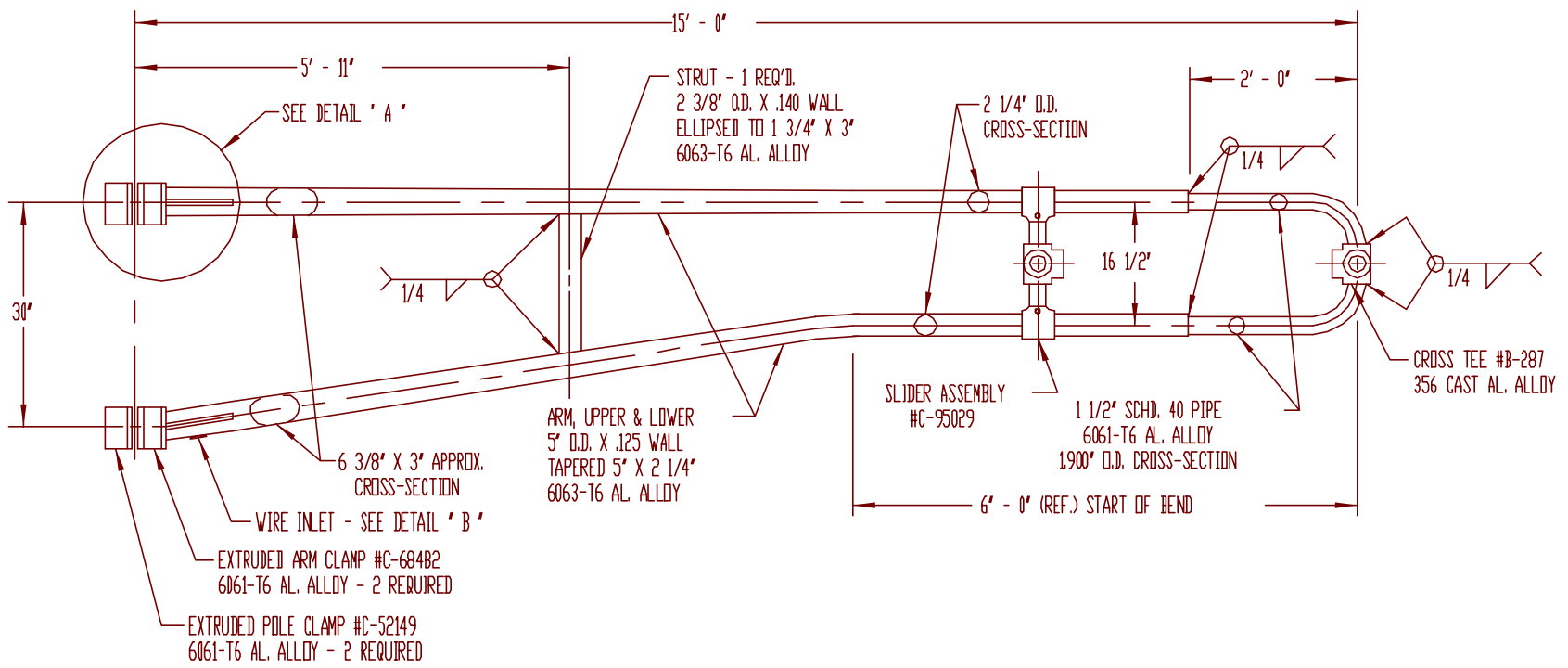


NOTE:
 1.- USE 4043 WELD WIRE.
 2.- 6063 ASSEMBLY .375 WALL OR LESS TO BE HEAT-TREATED TO T6 TEMPER AFTER WELDING.

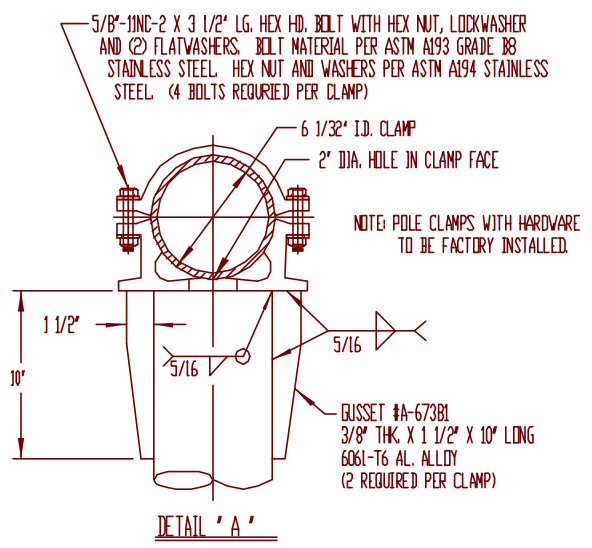
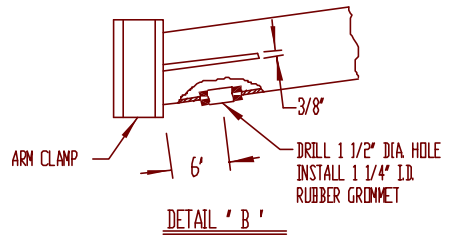


P&K

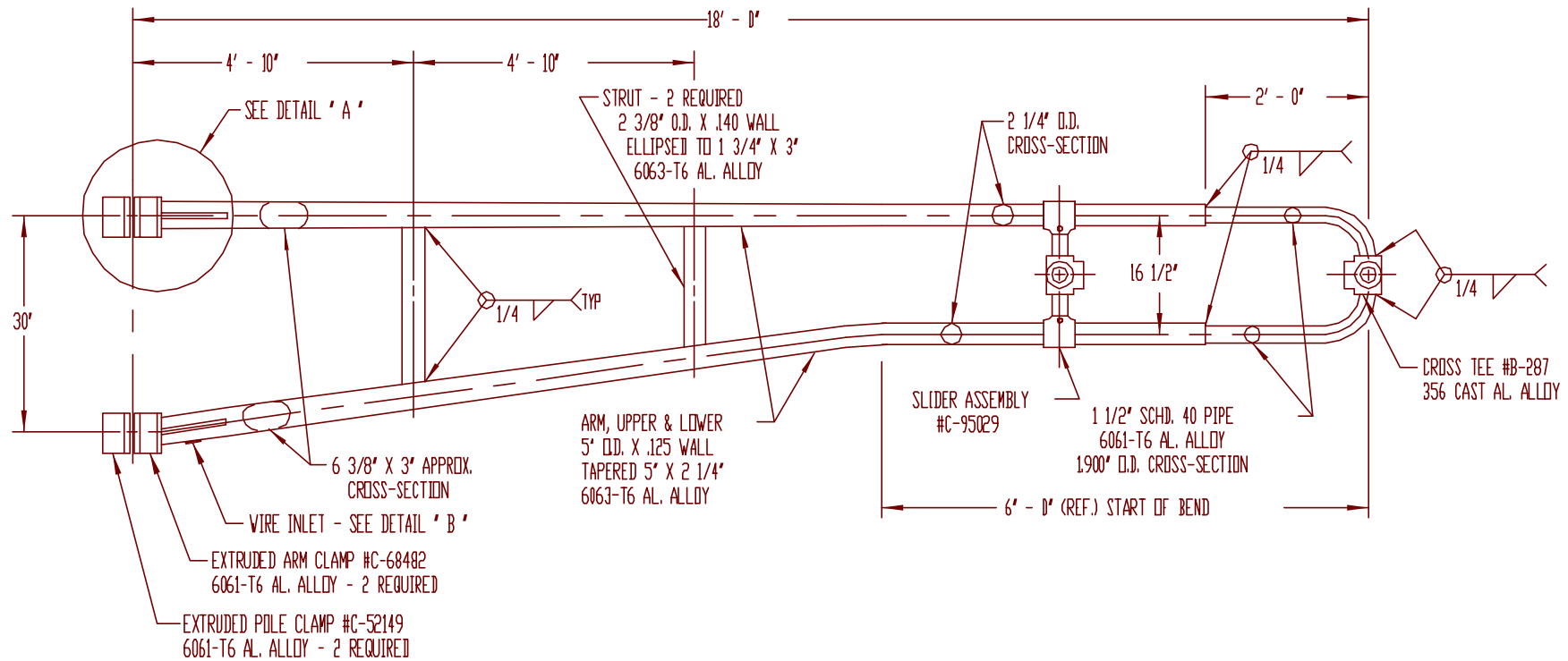
P&K POLE PRODUCTS, INC. 84 Foundry St, Newark, N.J.				
12 FT. TROMBONE ARM ASSEMBLY TR1235560-10				
DATE	BY	CHK	REV	NO. REV.
12-18-80	V.V.W.			12-18-80
NEW JERSEY DEPT. OF TRANSPORTATION			NONE	
			C-77170	



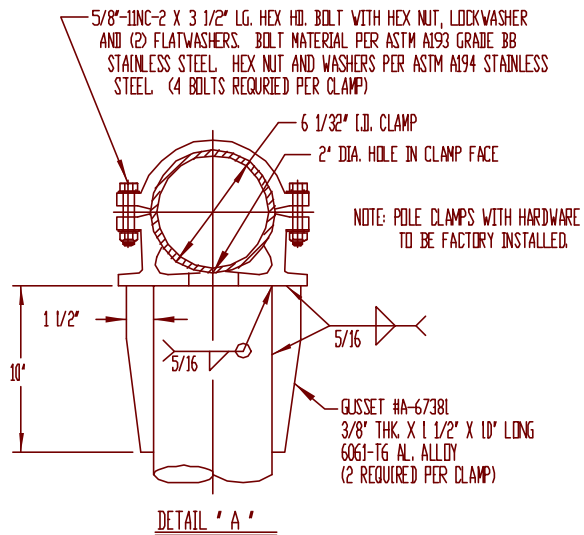
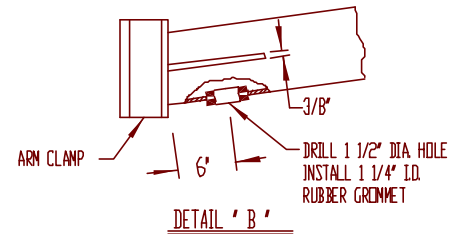
NOTE:
1.- USE 4043 WELD WIRE.
2.- 6063 ASSEMBLY .375 WALL OR LESS TO BE HEAT-TREATED TO T6 TEMPER AFTER WELDING.



					P&K	
					P&K POLE PRODUCTS, INC. 84 Foundry St., Newark, N.J.	
					TITLE 15 FT. TROMBONE ARM ASSEMBLY	
					TR1550560-10	
					DR. NMS.	12-14-77
					OR. V.V.W.	12-14-77
					CHG. NO.	
					SCALE	C-69378
					NEW JERSEY DEPT. OF TRANSPORTATION	
					NONE	

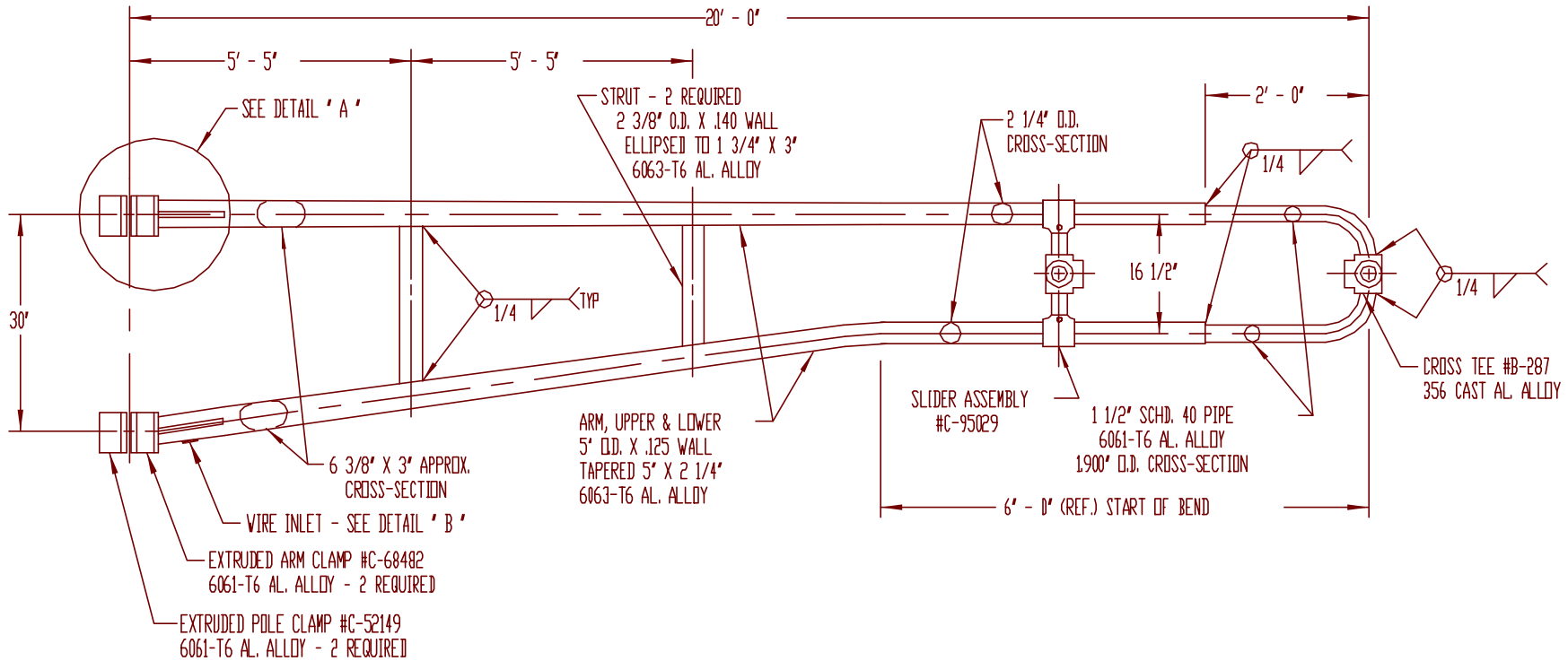


- NOTE:
1.- USE 4043 WELD WIRE.
2.- 6063 ASSEMBLY .375 WALL OR LESS TO BE HEAT-TREATED TO T6 TEMPER AFTER WELDING.

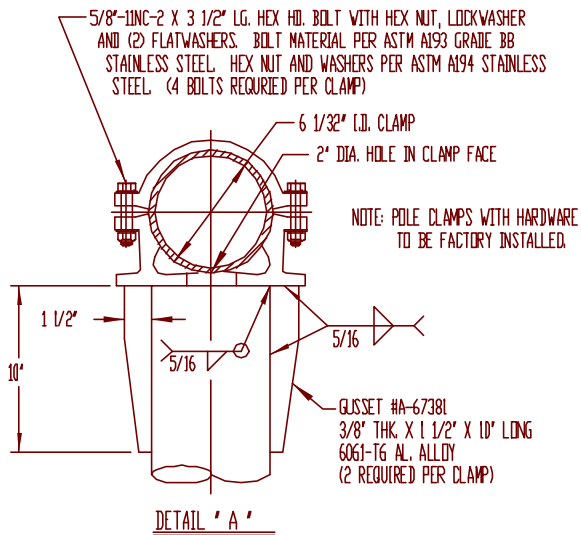
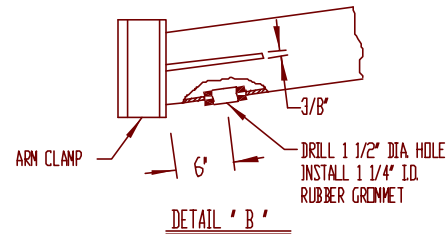


P&K

P&K POLE PRODUCTS, INC. 84 Foundry St., Newark, N.J.				
TITLE 18 FT. TROMBONE ARM ASSEMBLY TR1850560-10				
DR	MMS.	07-07-06	DATE	REV. NO. C-90639
CH	AW.	07-07-06		
CHKD	DATE			
CUSTOMER NEW JERSEY DEPT. OF TRANSPORTATION				
REVISIONS NONE				

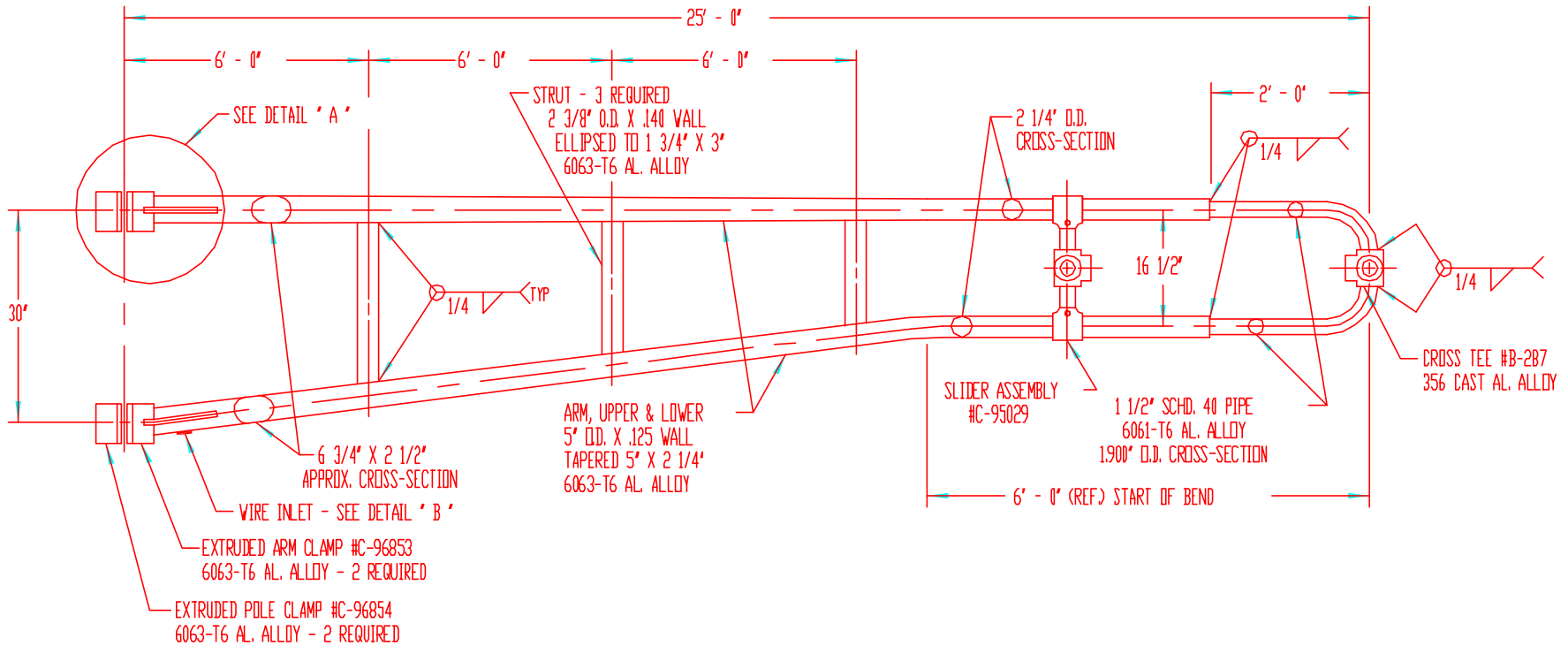


- NOTE:
1.- USE 4043 WELD WIRE.
2.- 6063 ASSEMBLY .375 WALL OR LESS TO BE HEAT-TREATED TO T6 TEMPER AFTER WELDING.

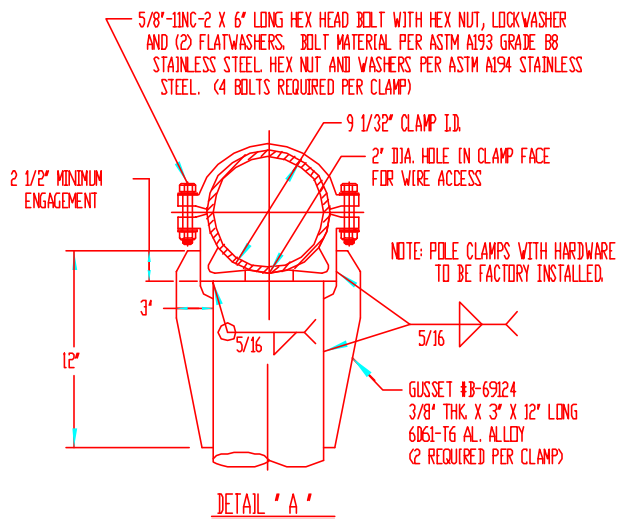
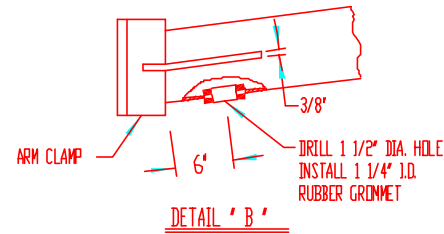


P&K

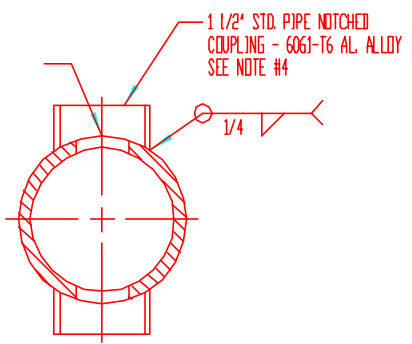
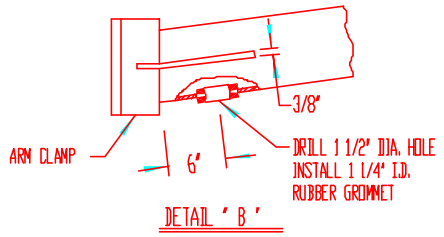
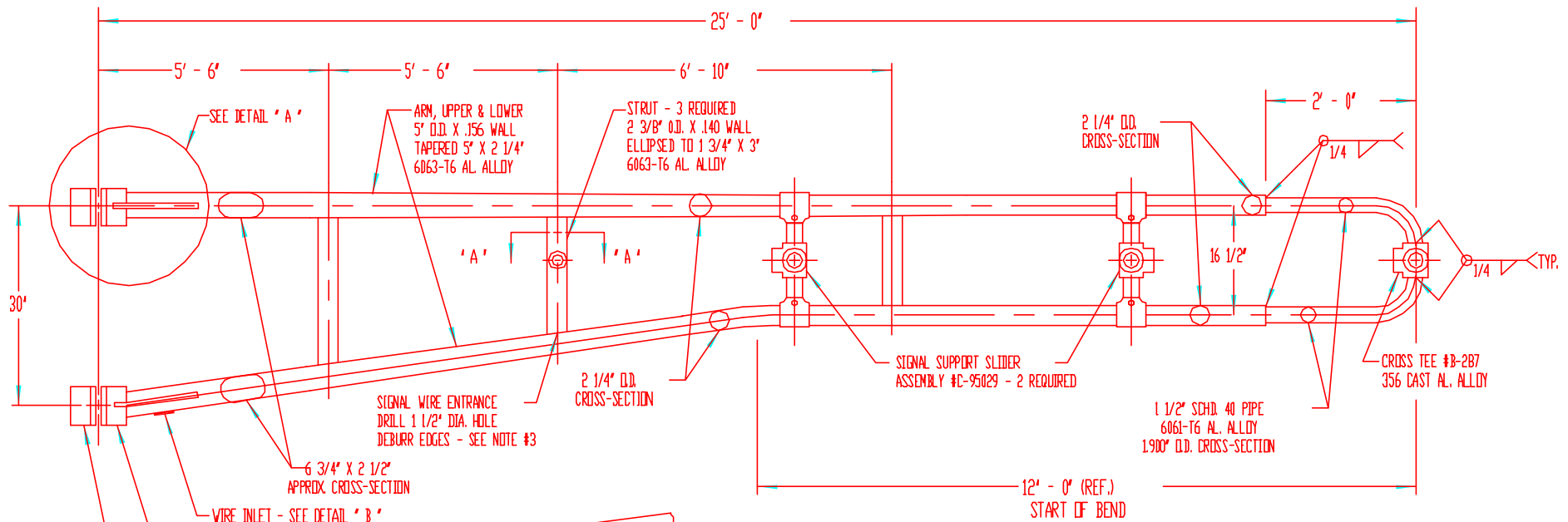
ALL					DESCRIPTION		DATE	BY	CR	REV/DEL.	P&K POLE PRODUCTS, INC. 84 Foundry St., Newark, N.J.		
										DATE	20 FT. TROMBONE ARM ASSEMBLY TR2050560-10		
										FRGDN BY	C-69379		
										BY	NMS.	12-14-77	CHK BY
										CR	V.V.W.	12-14-77	
										APP.			
										SCALE	NONE		
										NEW JERSEY DEPT. OF TRANSPORTATION			



NOTE:
1.- USE 4043 WELD WIRE.
2.- 6063 ASSEMBLY .375 WALL OR LESS TO BE HEAT-TREATED TO T6 TEMPER AFTER WELDING.

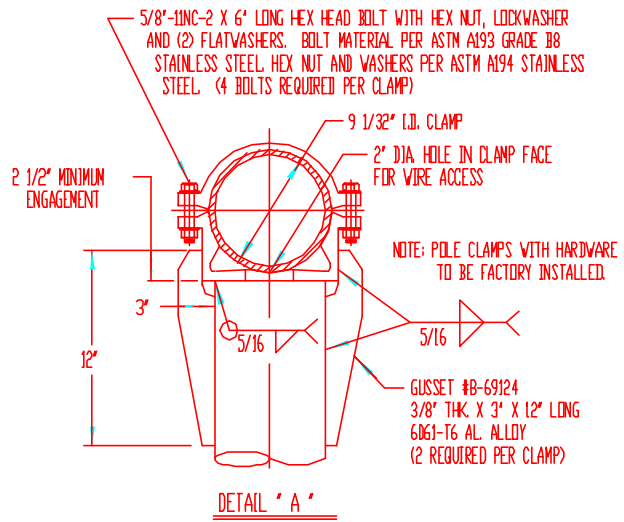


REV.					APPROVAL	P&K		
AL.	REVISION	DATE	BY	CR.	DATE	P&K POLE PRODUCTS, INC. 84 Foundry St., Newark, N.J.		
						TITLE 25 FT. TROMBONE ARM ASSEMBLY TR2550590-10		
						DRAWN BY M.M.S. 10-11-86 C.V.W.W. 10-11-86 APP. DATE CHECKED BY DATE		
						NEW JERSEY DEPT. OF TRANSPORTATION NONE		
						C-91184		



- NOTE:
1. - USE 4043 WELD WIRE.
 2. - 6063 ASSEMBLY .375 WALL OR LESS TO BE HEAT-TREATED TO T6 TEMPER AFTER WELDING.
 3. - BEFORE WELDING STRUT PROVIDE PULL WIRE FOR ELECTRICAL WIRING TO MID-MOUNT SIGNAL.

- NOTE: ARM SUPPLIED WITH THE FOLLOWING HARDWARE MOUNT (1) FIXED MID-MOUNT TRAFFIC SIGNAL
- (2) 1 1/2" STD. PIPE NIPPLE X 6" LONG
 - (2) 90 DEGREE CAST AL. ALLOY ELBOW
 - (2) 1 1/2" STD. PIPE BRONZE CHASE NIPPLE
 - (3) 1 1/2" STD. PIPE THREADED PIPE PLUGS



P&K

P&K					P&K POLE PRODUCTS, INC. 84 Foundry St., Newark, N.J.	
TITLE					25 FT. TROMBONE ARM ASSEMBLY	
PART NO.					TR2550690-11	
DR.	N.K.S.	11-27-87	CHK.	V.J.	11-27-87	C-92773
APP.			APP.			
CUSTOMER					NEW JERSEY DEPT. OF TRANSPORTATION	
REVISION					NONE	