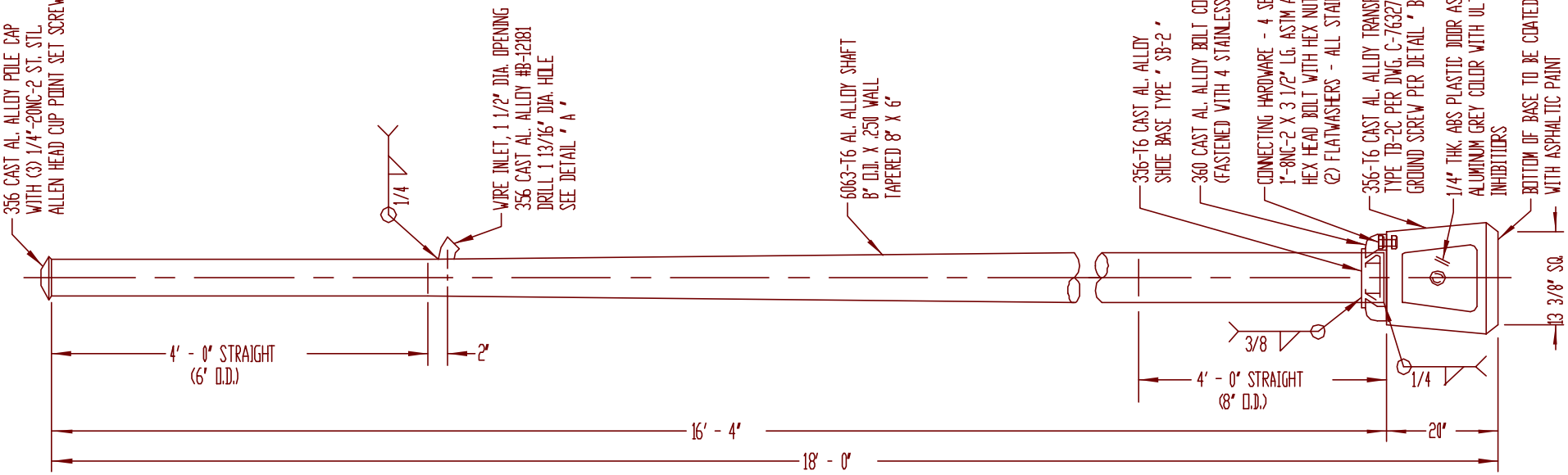
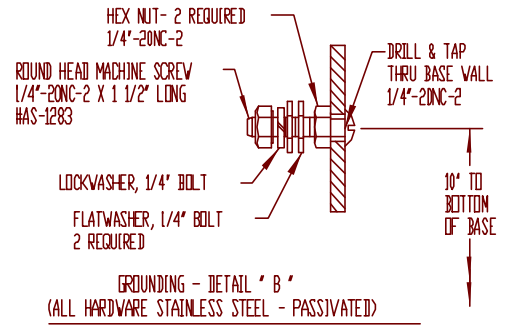
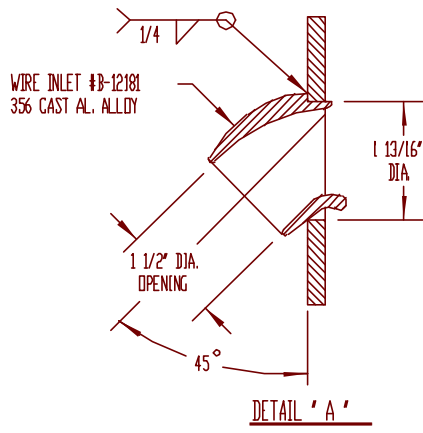


1"-8NC-2 X 3" LONG HEX HEAD BOLT, LOCKWASHER AND FLATWASHER - STAINLESS STEEL 4 OF EACH REQUIRED

356 CAST AL. ALLOY POLE CAP WITH (3) 1/4"-20NC-2 ST. STL. ALLEN HEAD CUP POINT SET SCREWS



NOTE:
 1. - USE 4043 WELD WIRE.
 2. - 6063 ASSEMBLY .375 WALL OR LESS TO BE HEAT-TREATED TO T6 TEMPER AFTER WELDING.



356-T6 CAST AL. ALLOY SHOE BASE TYPE 'SB-2'

360 CAST AL. ALLOY BOLT COVERS - 4 REQUIRED (FASTENED WITH 4 STAINLESS STEEL SCREWS)

CONNECTING HARDWARE - 4 SETS REQUIRED

1"-8NC-2 X 3 1/2" LG. ASTM A-193 GRADE BB HEX HEAD BOLT WITH HEX NUT, LOCKWASHER AND (2) FLATWASHERS - ALL STAINLESS STEEL - PASS.

356-T6 CAST AL. ALLOY TRANSFORMER BASE TYPE TB-2C PER DWG. C-76327 WITH GROUND SCREW PER DETAIL 'B'

1/4" THK. ABS PLASTIC JOOR ASSEMBLY ALUMINUM GREY COLOR WITH ULTRA-VIOLET INHIBITORS

BOTTOM OF BASE TO BE COATED WITH ASPHALTIC PAINT

					P&K	
					P&K POLE PRODUCTS, INC. 84 Foundry St, Newark, N.J.	
REV.	DESCRIPTION	DATE	BY	CHK	TITLE	
A	WAS 'B' SIZE DRAWING	01-28-93	WW		NJDOT TYPE 'T' POLE S8060018003I-10	
					DR.	DATE
					JP.B.	08-16-74
					CH.	
					DATE	
					REV. NO.	C-59442
					REV.	⊙
CHECKED BY					NEW JERSEY DEPT. OF TRANSPORTATION	
					NONE	