

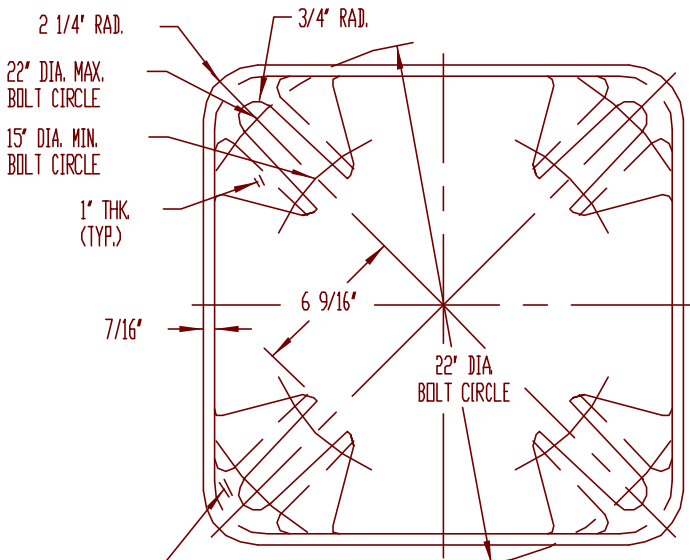
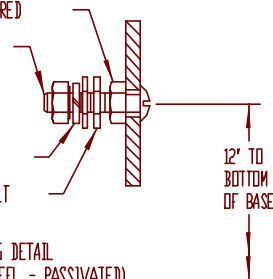
- BASE CASTING
356-T6 AL. ALLOY
- 5/16"-18NC-2 X 1 1/2" LONG
STAINLESS STEEL BUTTON HEAD
SOCKET SCREW
- 1/4"-20NC-2 DRILL & TAP THRU
BACK WALL FOR GROUNDING SCREW
SEE GROUNDING DETAIL
- 1/4" THK. ABS PLASTIC DOOR
WITH ULTRA-VIOLET INHIBITORS
- 2' X 3' SELF-ADHESIVE LABEL
FIXED TO OUTSIDE SURFACE OF DOOR

PLASTIC

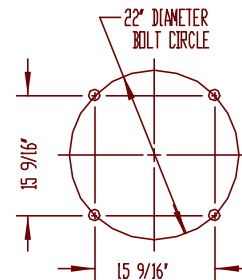
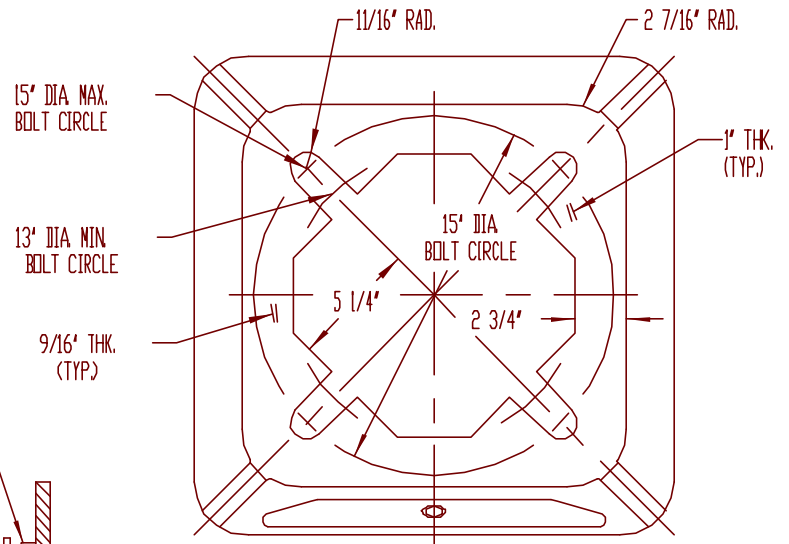
- 1/4"-20NC-2 HEX NUT - 2 REQUIRED
- ROUND HEAD MACHINE SCREW
1/4"-20NC-2 X 1 1/2" LONG
#AS-1283

- LOCKWASHER, 1/4" BOLT
- FLATWASHER, 1/4" BOLT
2 REQUIRED

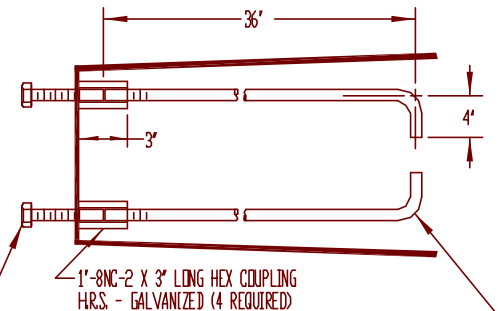
ELECTRICAL GROUNDING DETAIL
(ALL HARDWARE STAINLESS STEEL - PASSIVATED)



BOTTOM OF BASE TO BE COATED
WITH ASPHALTIC PAINT



- 1"-8NC-2 X 3" LONG HEX HEAD BOLT,
LOCKWASHER AND FLATWASHER -
STAINLESS STEEL 4 OF EACH REQUIRED



- 1" DIA. X 40" LONG ANCHOR ROD (4 REQUIRED). ANCHOR ROD
TO BE 55,000 PSI YIELD STRENGTH PER AASHTO M-314-90,
GRADE 55. TOP 12" OF ROD TO BE GALVANIZED PER AASHTO
M232 CLASS C, ASTM A153.

P&K

DESCRIPTION					DATE	BY	CHK	APP	REVISION	P&K POLE PRODUCTS, INC. 84 Foundry St., Newark, N.J.		
A	ROD WAS 48" LONG	05-05-88	MMS	WVW					TITLE	TB-M81 BASE ASSEMBLY		
1	ADDED ALT. DETAIL "A"	08-03-89	DCR						FIGURE NO. REPORT	NJDOT TYPE K BASE		
C1	REV. TO PLASTIC DOOR											
C2	REDRAWN	02-23-91		WVW								
1	DELETED ALT. MATERIAL	03-13-91		WVW								
									DR. N.A.S.	09-30-86	CHK. D	
									CA. W.W.W.	09-30-86		C-68095
									DR.			REV. 0
									DATE	NONE		
ORDER										NEW JERSEY DEPT. OF TRANSPORTATION		