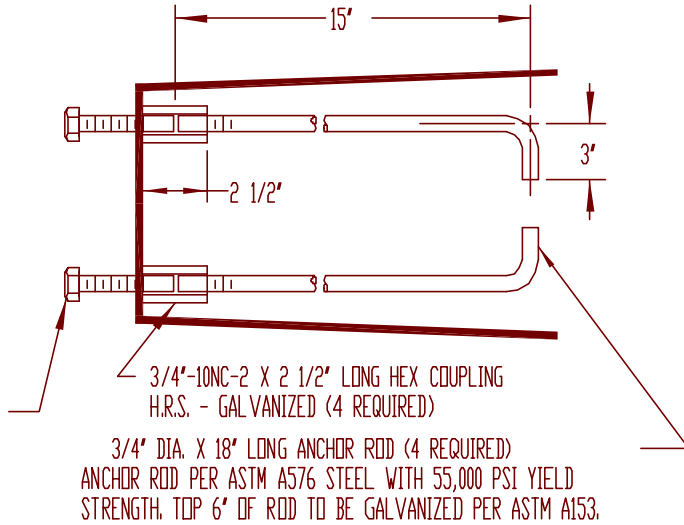


3/4"-10NC-2 X 2" LONG HEX HEAD BOLT, LOCKWASHER AND FLATWASHER ALL STAINLESS STEEL - PASSIVATED 4 OF EACH REQUIRED

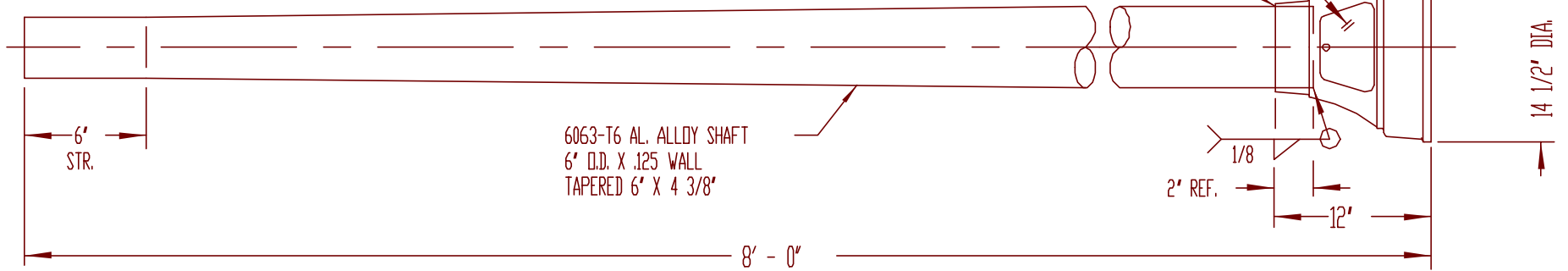


3/4"-10NC-2 X 2 1/2" LONG HEX COUPLING H.R.S. - GALVANIZED (4 REQUIRED)

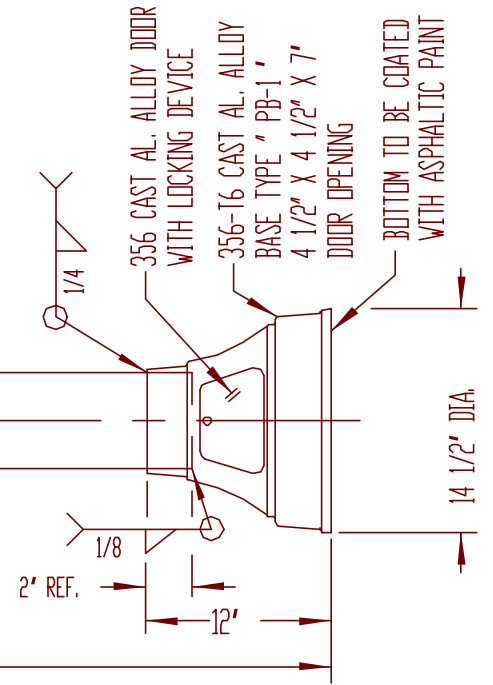
3/4" DIA. X 18" LONG ANCHOR ROD (4 REQUIRED) ANCHOR ROD PER ASTM A576 STEEL WITH 55,000 PSI YIELD STRENGTH, TOP 6" OF ROD TO BE GALVANIZED PER ASTM A153.

NOTE:

1. - USE 4043 WELD WIRE.
2. - 6063 ASSEMBLY WITH .375 WALL OR LESS TO BE HEAT-TREATED TO T6 TEMPER AFTER WELDING.



6063-T6 AL. ALLOY SHAFT
6" O.D. X .125 WALL
TAPERED 6" X 4 3/8"

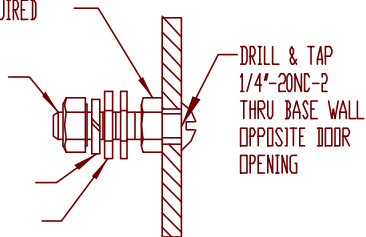


HEX NUT - 2 REQUIRED
1/4"-20NC-2

ROUND HEAD MACHINE SCREW
1/4"-20NC-2 X 1 1/2" LONG
#AS-1283

LOCKWASHER, 1/4" BOLT
FLATWASHER, 1/4" BOLT
2 REQUIRED

ELECTRICAL GROUNDING DETAIL
(ALL HARDWARE STAINLESS STEEL - PASSIVATED)



DRILL & TAP
1/4"-20NC-2
THRU BASE WALL
OPPOSITE DOOR
OPENING

SEE ME

ALTERATIONS					MATERIAL	P&K POLE PRODUCTS 84 Foundry St., Newark, N.J.		
ALT	DESCRIPTION	DATE	BY	CHK	STOCK SIZE	TITLE		
						SP644508001P-10		
					FINISH OR TEMPER	DR. A.J.P.	05-28-80	B-55132-1
						DR. V.W.W.	05-28-80	
					CUSTOMER	DR. [blank]	[blank]	
					NEW JERSEY DEPT. OF TRANSPORTATION	SCALE	NONE	

P&K