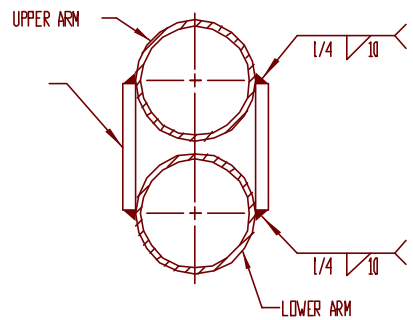


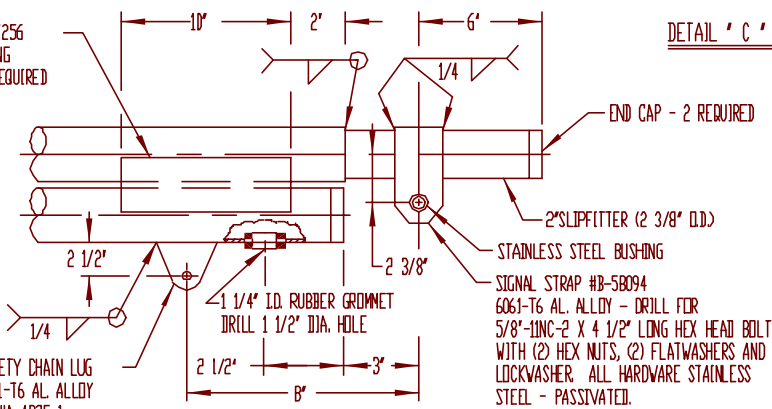
NOTE:  
 1.- USE 4043 WELD WIRE.  
 2.- 6063 ASSEMBLY .375 WALL OR LESS TO BE HEAT-TREATED TO T6 TEMPER AFTER WELDING.

SEE DETAIL 'A'  
 TYP 1/4  
 7 5/8" X 3 1/2" APPROX. CROSS-SECTION  
 WIRE INLET - SEE DETAIL 'D'  
 EXTRUDED ARM CLAMP #C-96855  
 6063-T6 AL. ALLOY - 2 REQUIRED  
 EXTRUDED POLE CLAMP #C-96856  
 6063-T6 AL. ALLOY - 2 REQUIRED

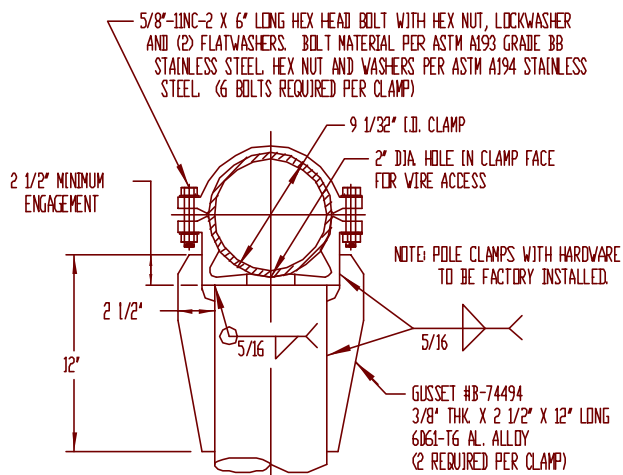
REINFORCING PLATE - 2 REQUIRED  
 5/16" THK X 3" X 10" LONG  
 6061-T6 AL. ALLOY



REINFORCING PLATE #A-67256  
 5/16" THK X 3" X 10" LONG  
 6061-T6 AL. ALLOY - 2 REQUIRED  
 (SEE DETAIL 'C')



END CONSTRUCTION - DETAIL 'B'



DETAIL 'A'

P&K

REV.					DATE		BY		CHK		P&K POLE PRODUCTS, INC. 84 Foundry St., Newark, N.J.	
DESCRIPTION					TITLE		25 FT. MAST ARM ASSEMBLY MA2560890-10		DR. A.D.C. 07-22-80		316 IN. 07-22-80	
DRAWN BY					SCALE		NONE		C-76143		NEW JERSEY DEPT. OF TRANSPORTATION	