

STRUT, 2 3/8" O.D. X .140 WALL  
 ELLIPSED TO 3" X 1 3/4"  
 6063-T6 AL. ALLOY - 2 REQUIRED

2 3/8" O.D. SECTION

SEE DETAIL "B"

SEE DETAIL "A"

TYP 1/4

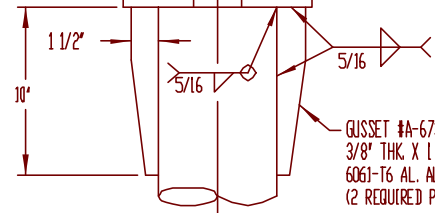
ARM, UPPER & LOWER  
 5" O.D. X .125 WALL  
 6063-T6 AL. ALLOY

5/8"-11NC-2 X 3 1/2" LONG HEX HEAD BOLT WITH HEX NUT, LOCKWASHER  
 AND (2) FLATWASHERS. BOLT MATERIAL PER ASTM A193 GRADE B8  
 STAINLESS STEEL. HEX NUT AND WASHERS PER ASTM A194 STAINLESS  
 STEEL. (4 BOLTS REQUIRED PER CLAMP)

6 1/32" O.D. CLAMP  
 2" DIA. HOLE IN CLAMP FACE

NOTE: POLE CLAMPS WITH HARDWARE  
 TO BE FACTORY INSTALLED.

5' - 6'



GUSSET #A-67381  
 3/8" THK. X 1 1/2" X 10" LONG  
 6061-T6 AL. ALLOY  
 (2 REQUIRED PER CLAMP)

DETAIL "A"

- NOTE:  
 1. - USE 4043 WELD WIRE.  
 2. - 6063 ASSEMBLY .375 WALL OR LESS TO BE HEAT-TREATED TO T6 TEMPER AFTER WELDING.

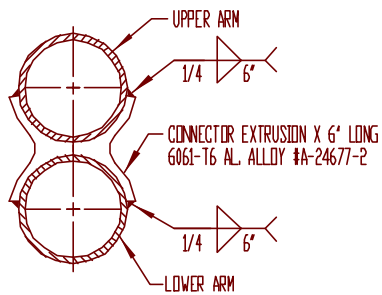
EXTRUDED ARM CLAMP #C-68482  
 6061-T6 AL. ALLOY - 2 REQUIRED

EXTRUDED POLE CLAMP #C-52149  
 6061-T6 AL. ALLOY - 2 REQUIRED

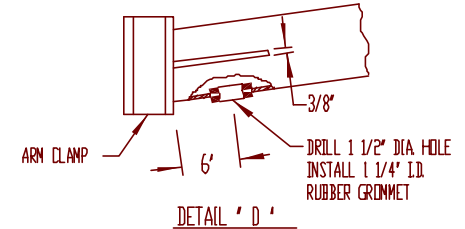
WIRE INLET - SEE DETAIL "D"

6 3/8" X 3" APPROX.  
 CROSS-SECTION

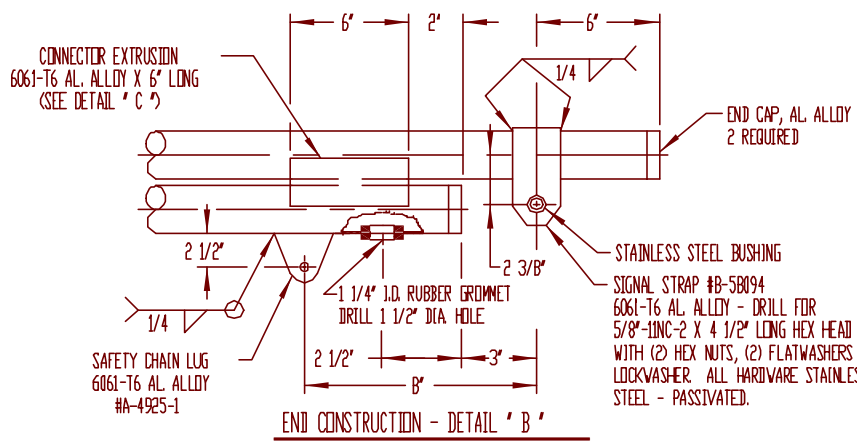
30'



DETAIL "C"



DETAIL "D"



END CONSTRUCTION - DETAIL "B"

CONNECTOR EXTRUSION  
 6061-T6 AL. ALLOY X 6" LONG  
 (SEE DETAIL "C")

END CAP, AL. ALLOY  
 2 REQUIRED

STAINLESS STEEL BUSHING  
 SIGNAL STRAP #B-58094  
 6061-T6 AL. ALLOY - DRILL FOR  
 5/8"-11NC-2 X 4 1/2" LONG HEX HEAD BOLT  
 WITH (2) HEX NUTS, (2) FLATWASHERS AND  
 LOCKWASHER. ALL HARDWARE STAINLESS  
 STEEL - PASSIVATED.

SAFETY CHAIN LUG  
 6061-T6 AL. ALLOY  
 #A-4925-1

P&K

ALL					DESCRIPTION		DATE	BY	CHK	NO./VOL.	P&K POLE PRODUCTS, INC. 84 Foundry St., Newark, N.J.			
										DATE	15 FT. MAST ARM ASSEMBLY MA1550560-10			
										FRG. OF CHANGE				
										BY	FGS	06-15-79	CHK. NO.	
										OR	W.V.W.	06-15-79	C-68528	
										APPROVED				
										ORDERED BY	NEW JERSEY DEPT. OF TRANSPORTATION		SCALE	NONE