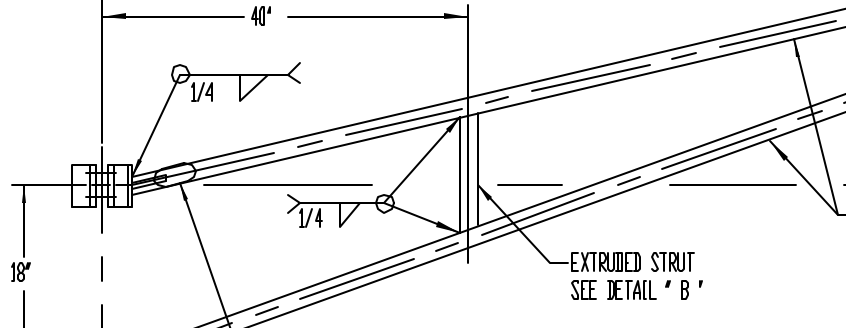
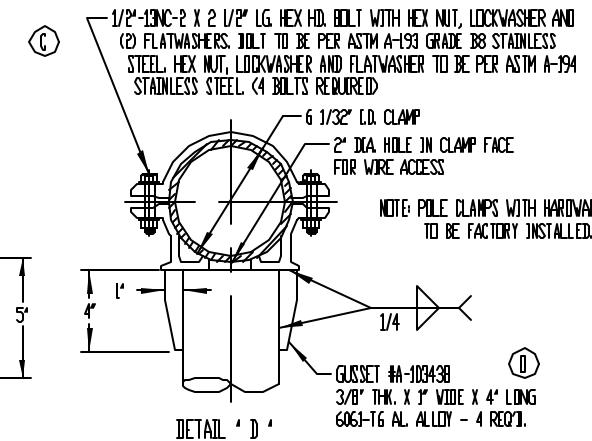
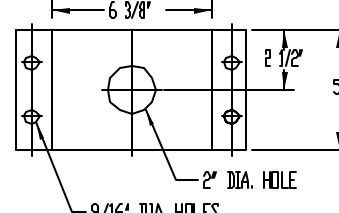
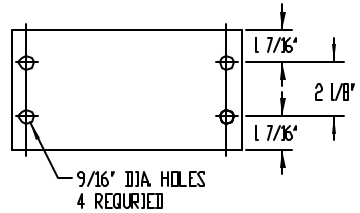
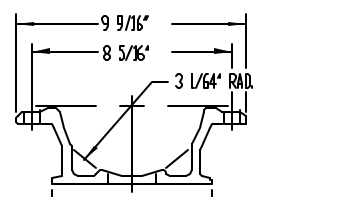
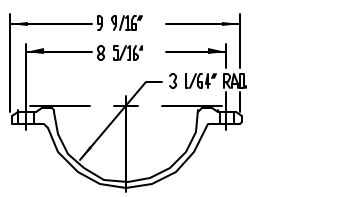


① AL. ALLOY END CAP #A-100376  
 ARM CONNECTOR EXTRUSION #A-24677-1  
 6061-T6 AL. ALLOY X 3' LONG  
 SEE DETAIL 'A'



6063-T6 AL. ALLOY ARM & BRACE  
 3 1/2" O.D. X .125 WALL TUBING

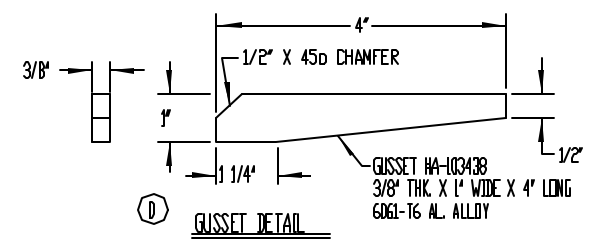
NOTE:  
 1 - USE 4043 WELD WIRE.  
 2 - 6063-T6 ASSEMBLY .375 WALL OR LESS TO BE HEAT-TREATED TO T6 TEMPER AFTER WELDING.



EXTRUDED ARM CLAMP  
 6061-T6 AL. ALLOY - 2 REQUIRED  
 SEE DETAIL 'C'

EXTRUDED POLE CLAMP  
 6061-T6 AL. ALLOY - 2 REQUIRED  
 SEE DETAIL 'C'

NOTE: POLE CLAMPS WITH HARDWARE TO BE FACTORY INSTALLED.



DETAIL 'B'

DETAIL 'D'

NO.	REVISION	BY	DATE	CHKD.	DATE	SCALE	DATE	REVISION
A	REVISED DETAIL 'D'	MS.	02-15-79					
B	REVISED DETAIL 'C'							
C	DETAIL 'J' REDRAWN	MS.	03-11-79	V.J.				
D	BOLT WAS 3" LONG GUSSET WAS 1 1/2" LONG WAS VINYL END CAP ARM AND POLE CLAMPS WERE 4 1/2" LONG ADDED GUSSET DETAIL REDRAWN	WV	07-17-78	WV				
		WV	01-11-79					

1536 TRUSS ARM ASSEMBLY FOR N.J.D.O.T. FOR 6" O.D. POLE TOP	
BY A.J.P.	11-22-77
BY V.J.	11-22-77
NO. C-89002	REV. 1
NEW JERSEY DEPT. OF TRANSPORTATION	