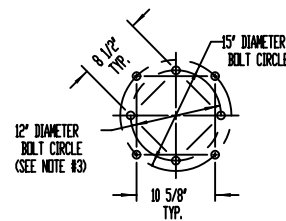
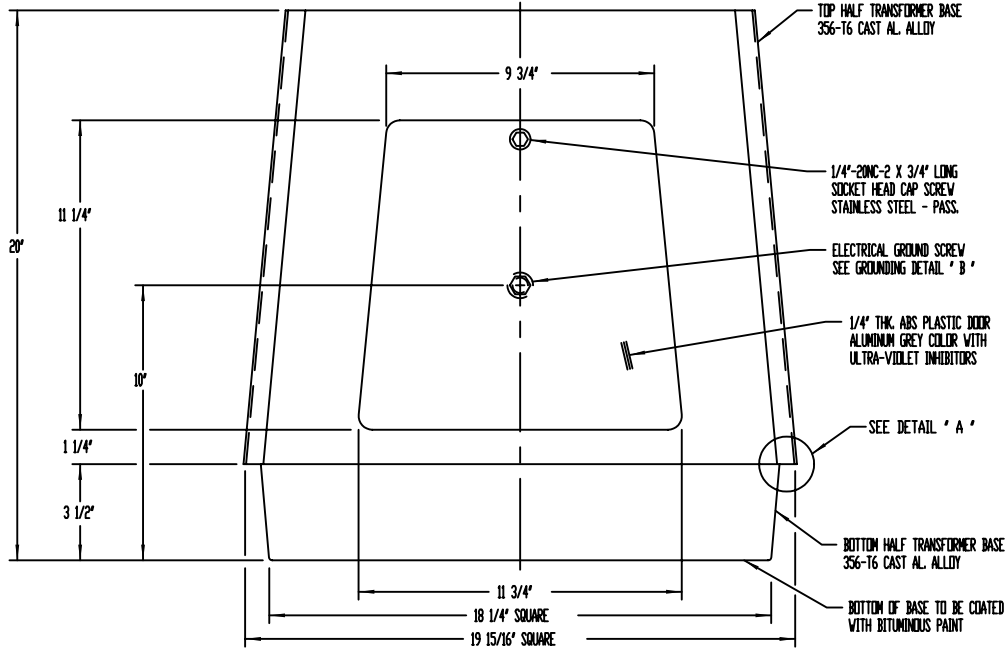
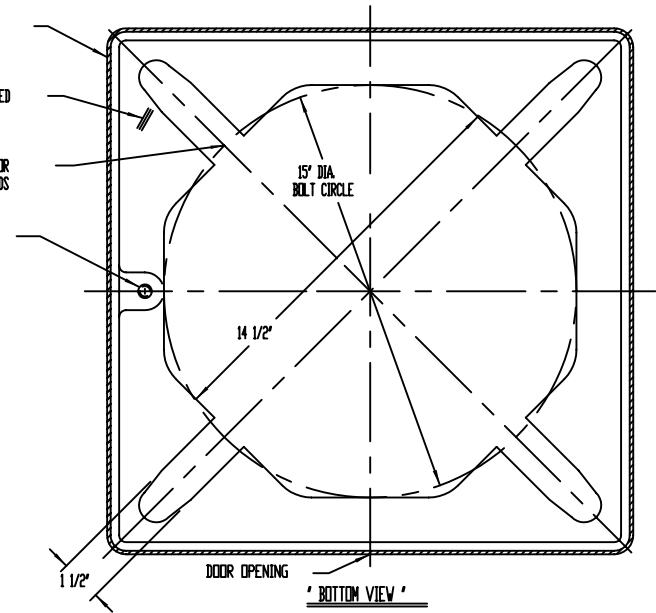
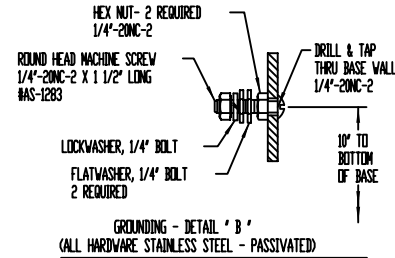


BEFORE WELDING, POSITION BASE BOTTOM HALF SO THAT GROUND BSS IS TO LEFT OF DOOR OPENING IN BASE TOP HALF

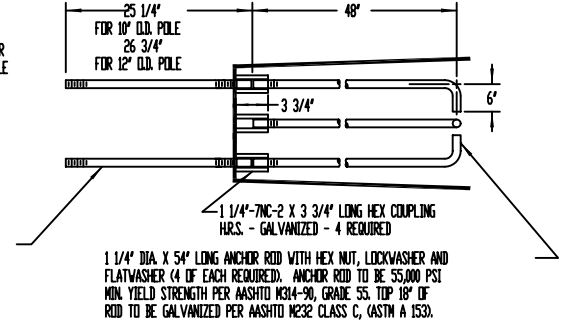
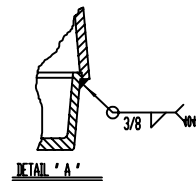
BOTTOM OF BASE TO BE COATED WITH BITUMINOUS PAINT

15" DIA. BOLT CIRCLE FOR 1 1/4" DIA. ANCHOR STUDS

BSS FOR ELECTRICAL GROUND ATTACHMENT
1/2"-13NC-2 TAP THRU



1 1/4" DIA. ANCHOR STUD WITH HEX NUT, LOCKWASHER AND FLATWASHER - H.R.S. GALVANIZED. STUD TO BE ASTM A576 STEEL WITH 55,000 PSI MINIMUM YIELD STRENGTH - GALVANIZED PER ASTM A-153 (FULL LENGTH). 4 REQUIRED ON 15" DIAMETER BOLT CIRCLE.



NOTE:

- 1 - SEE BASE BOTTOM VIEW DETAIL BEFORE WELDING.
- 2 - COMPLETE BASE ASSEMBLY TO BE HEAT-TREATED TO T6 TEMPER AFTER WELDING.
- 3 - NO ANCHOR STUDS TO BE PROVIDED FOR 12" DIAMETER BOLT CIRCLE.

		P&K	
		P&K POLE PRODUCTS, INC. 84 Foundry St., Newark NJ	
		ESSEX COUNTY - TRAFFIC TRANS. BASE - 10" & 12" POLES	
REV.	DATE	BY	APP.
1	08-22-20	MM	
2	08-22-20	MM	
			G-105243
		NONE	