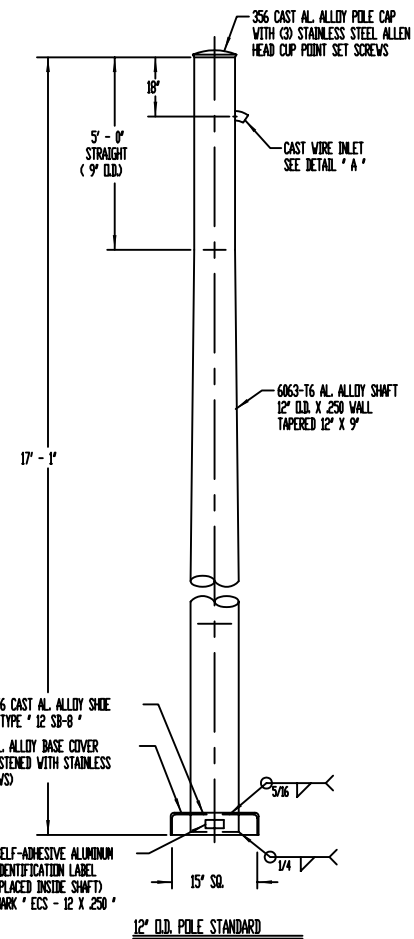
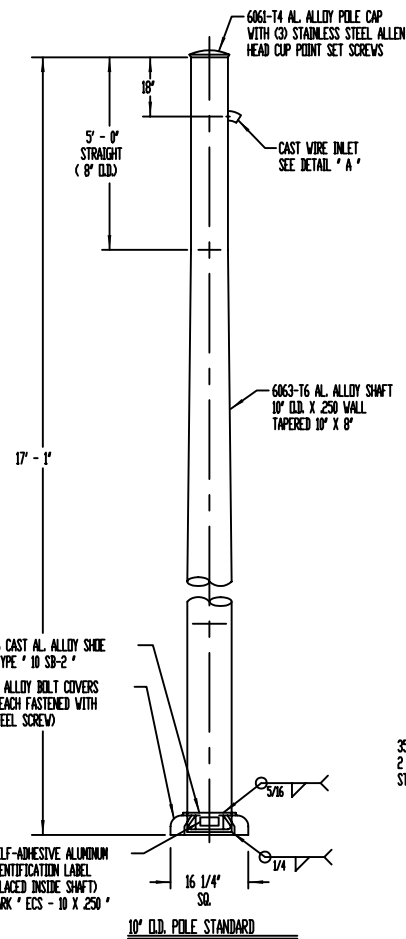
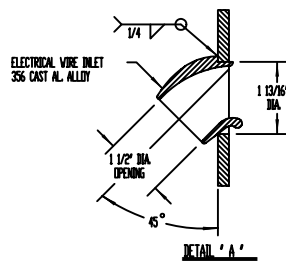
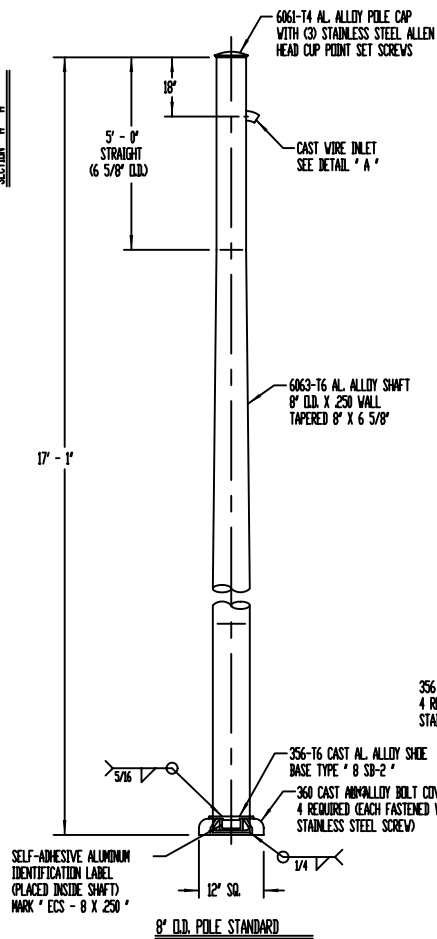


NOTE: HEX SOCKETS TO HAVE AL. ALLOY SPACER INSTALLED SO AS TO PROVIDE FLAT SURFACE ON TOP OF BASE CASTING.



NOTE:  
 1. - USE 4043 WELD WIRE.  
 2. - 6063 ASSEMBLY .375 WALL OR LESS TO BE HEAT-TREATED TO T6 TEMPER AFTER WELDING.

P&K		P&K POLE PRODUCTS, INC 84 Foundry St., Newark NJ	
ESSEX COUNTY - TRAFFIC POLE ASSEMBLY STANDARDS			
REV.	DATE	REV.	DATE
1	10-2-25	1	10-2-25
2	10-2-25		
NONE		G-105241	