

SEE DETAIL 'A'

WIRE INLET - SEE DETAIL 'D'

EXTRUDED ARM CLAMP #G-66758  
6063-T6 AL. ALLOY - 2 REQUIRED

EXTRUDED POLE CLAMP #G-66759  
6063-T6 AL. ALLOY - 2 REQUIRED

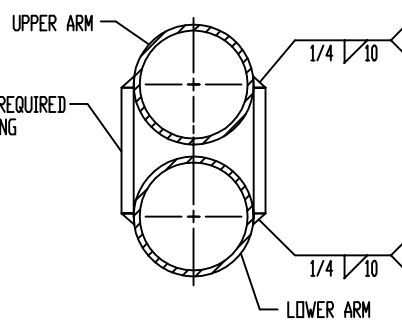
ARM, UPPER & LOWER  
6" O.D. X .188 WALL  
6063-T6 AL. ALLOY

STRUT - 1 REQUIRED  
2 3/8" O.D. X .140 WALL  
ELLIPSED TO 1 3/4" X 3"  
6063-T6 AL. ALLOY

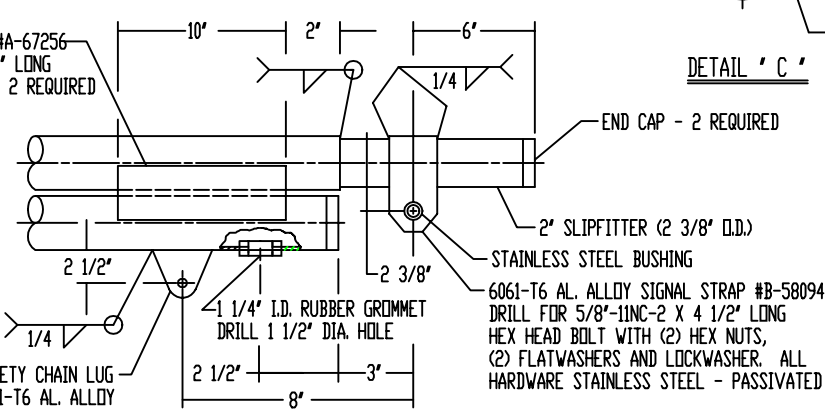
STRUT - 2 REQUIRED  
3" O.D. X .188 WALL  
6063-T6 AL. ALLOY

NOTE:  
1.- USE 4043 WELD WIRE.  
2.- 6063 ASSEMBLY .375 WALL OR LESS TO BE HEAT-TREATED TO T6 TEMPER AFTER WELDING.

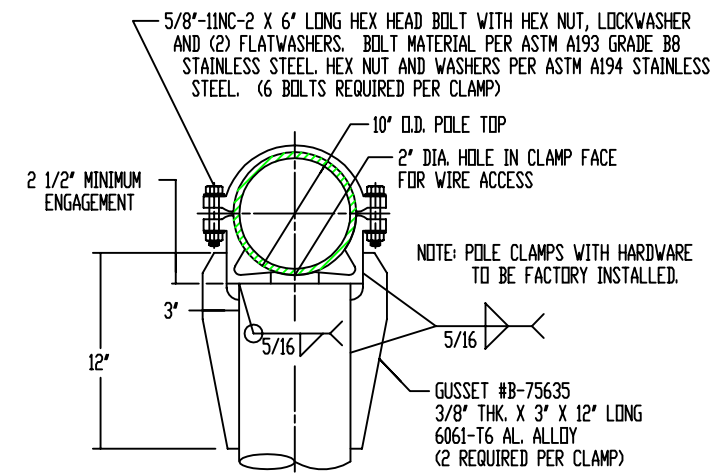
REINFORCING PLATE - 2 REQUIRED  
5/16" THK. X 3" X 10" LONG  
6061-T6 AL. ALLOY



REINFORCING PLATE #A-67256  
5/16" THK. X 3" X 10" LONG  
6061-T6 AL. ALLOY - 2 REQUIRED  
(SEE DETAIL 'C')



END CONSTRUCTION - DETAIL 'B'



DETAIL 'A'

P&K

P&K POLE PRODUCTS, INC. 84 Foundry St., Newark NJ				
TITLE BERGEN CODE "MA25-12" MA2560810-70				
DR. M.M.S.	05-12-95	CHK. BY		
CR. W.W.V.	05-12-95	APP.		
SCALE NONE				
CUSTOMER BERGEN COUNTY DEPT. OF PUBLIC WORKS				