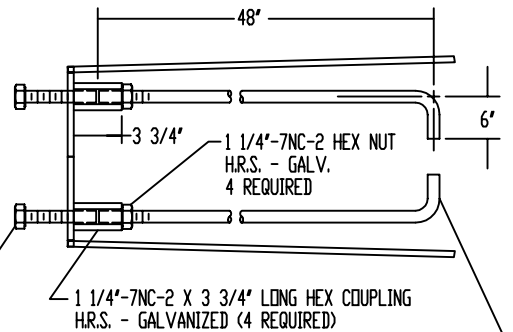
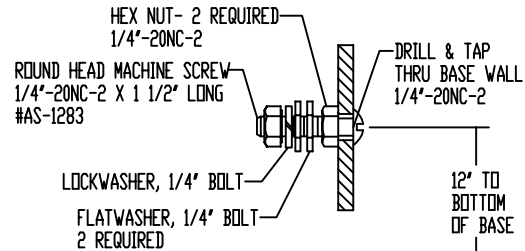


1 1/4"-7NC-2 X 4' LONG HEX HEAD BOLT,
STD. LOCKWASHER AND 1/2" THK. X 2 3/4" O.D.
FLATWASHER - H.R.S. - GALV. (4 OF EACH REQUIRED)



1 1/4" DIA. X 54" LONG ANCHOR ROD (4 REQUIRED).
ANCHOR ROD TO BE 55,000 PSI MIN. YIELD STRENGTH
PER AASHTO M314-90, GRADE 55. TOP 18" OF ROD TO
BE GALVANIZED PER AASHTO M232 CLASS C, (ASTM A 153).



GROUNDING - DETAIL 'A'
(ALL HARDWARE STAINLESS STEEL - PASSIVATED)

IN ADDITION TO STANDARD ANCHORAGE AS SHOWN THE
FOLLOWING ADDITIONAL ANCHORAGE ALSO SUPPLIED:

1. - (4) 1" DIA. X 40" LONG ANCHOR RODS - H.R.S. GALV.
2. - (4) 1"-8NC-2 HEX NUTS - H.R.S. GALV.
3. - (4) 1"-8NC-2 X 3' LONG HEX COUPLINGS - H.R.S. GALV.
4. - (4) 1"-8NC-2 X 3 1/2" LONG HEX HEAD BOLTS - H.R.S. GALV.
5. - (4) LOCKWASHERS FOR 1" BOLT - H.R.S. GALV.
6. - (4) FLATWASHERS FOR 1" BOLT - H.R.S. GALV.
7. - (8) BEVEL WASHERS FOR 1 1/4" BOLT - CAST AL. ALLOY
8. - (4) CAPPLUGS FOR 1"-8NC-2 THREADS - PLASTIC

FURNISH WITH EACH POLE THE FOLLOWING CONNECTING HARDWARE:

1. - (4) 1 1/4"-7NC-2 X 5 1/2" LONG HEX HEAD BOLTS - H.R.S. GALV.
2. - (4) 1 1/4"-7NC-2 HEX NUTS - H.R.S. GALV.
3. - (4) LOCKWASHERS FOR 1 1/4" BOLT - H.R.S. GALV.
4. - (4) 1/2" THK. X 2 3/4" O.D. FLATWASHERS FOR 1 1/4" BOLT - H.R.S. GALV.

356 CAST AL. ALLOY POLE CAP
WITH (3) 1/4"-20NC-2 ST. STL.
ALLEN HEAD CUP POINT SET SCREWS

6063-T6 AL. ALLOY SHAFT
12" O.D. X .312 WALL
TAPERED 12" X 10"
SATIN BRUSH FINISH

6063-T6 AL. ALLOY REINFORCING SLEEVE
.312 WALL X 12" LONG

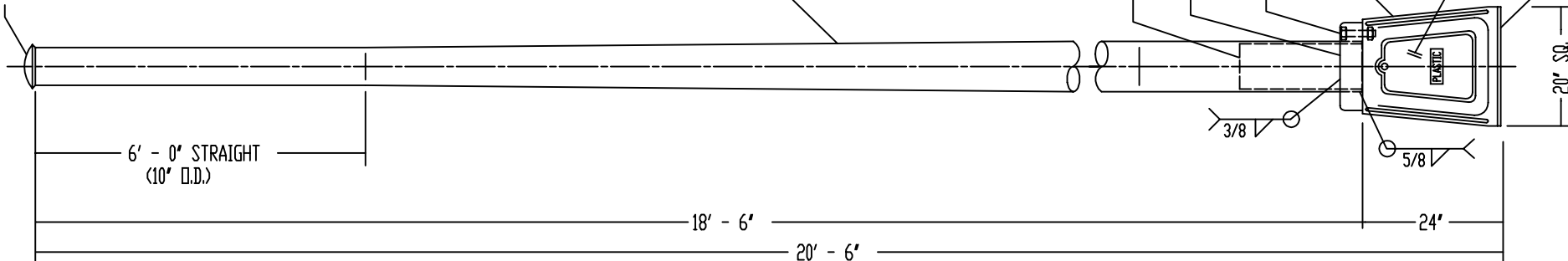
356-T6 CAST AL. ALLOY SHOE BASE TYPE 'SB-8'
BASE IS 15" SQUARE WITH BOLT HOLES ON
15" DIAMETER BOLT CIRCLE

CONNECTING HARDWARE - 4 SETS REQUIRED
1 1/4"-7NC-2 X 5 1/2" LONG HEX HEAD BOLT
WITH HEX NUT, LOCKWASHER AND HEAVY FLATWASHER
ALL H.R.S. - GALVANIZED

356-T6 CAST AL. ALLOY TRANSFORMER BASE TYPE TB-M81
WITH GROUND SCREW PER DETAIL 'A'

1/4" THK. ABS PLASTIC DOOR ASSEMBLY WITH
ULTRA-VIOLET INHIBITORS (OUTSIDE SURFACE
OF DOOR TO HAVE 2" X 3" SELF-ADHESIVE LABEL)

BOTTOM OF BASE TO BE COATED WITH BITUMINOUS PAINT



NOTE:

1. - USE 4043 WELD WIRE.
2. - 6063 ASSEMBLY .375 WALL OR LESS TO BE HEAT-TREATED TO T6 TEMPER AFTER WELDING.
3. - POLE ASSEMBLY TO BE SUPPLIED WITH 1 1/4" I.D. RUBBER GROMMET FOR WIRING TO TRAFFIC MAST ARM (FIELD DRILL 1 1/2" DIA. HOLE).

P&K

P&K					P&K POLE PRODUCTS, INC. 84 Foundry St., Newark, N.J.	
ALT.	DESCRIPTION	DATE	BY	CHK	STICK SIZE	TITLE
A	WAS 5' - 0" TOP STR.	08-21-95	WVW			S121022006BQ-71
B	DELETED WIRE HOLE	12-09-97	WVW			BERGEN CODE ST12-2006
					DR. M.M.S.	05-20-94
					CHK. W.V.V.	05-20-94
					APP.	SCALE
					BERGEN COUNTY DEPT. OF PUBLIC WORKS	C-104252